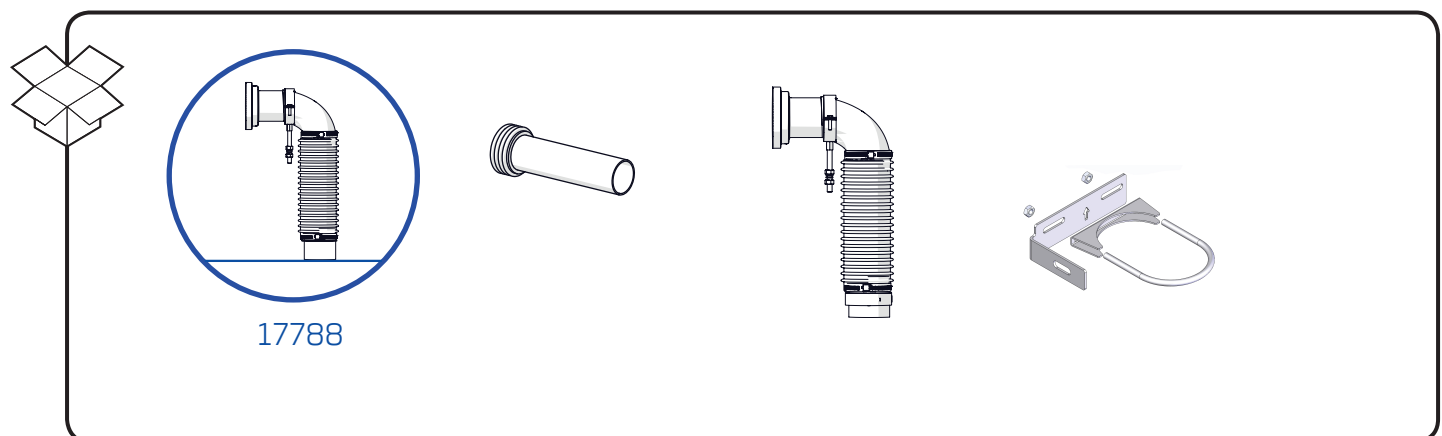
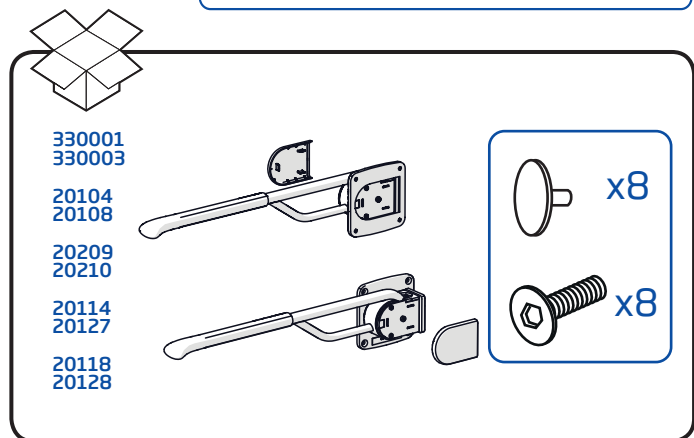
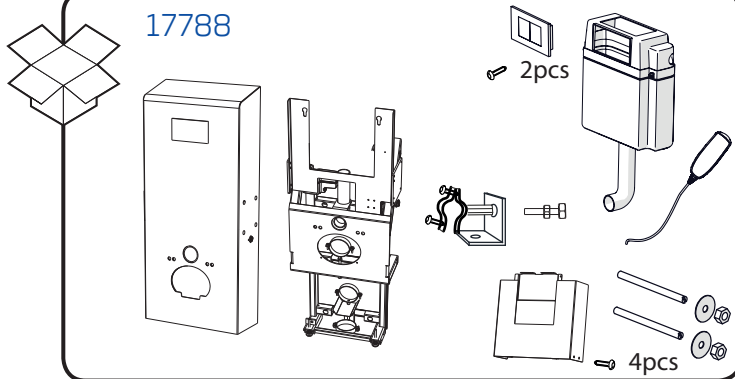
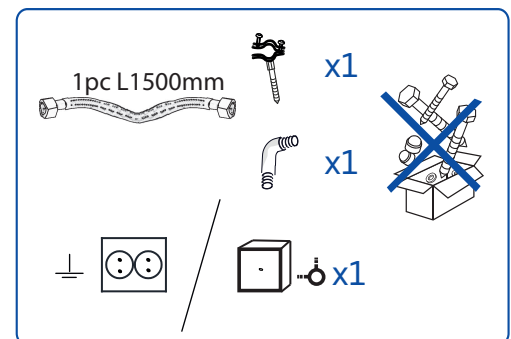
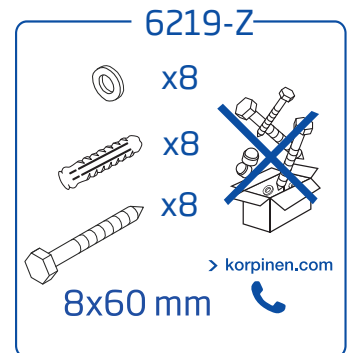
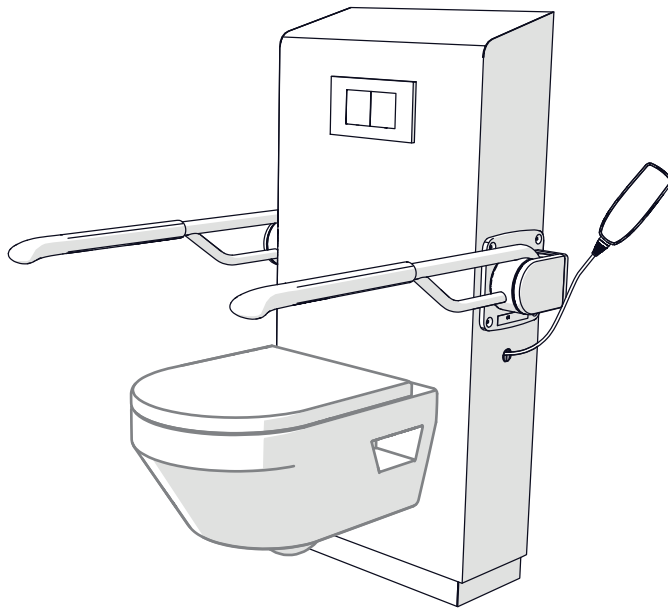


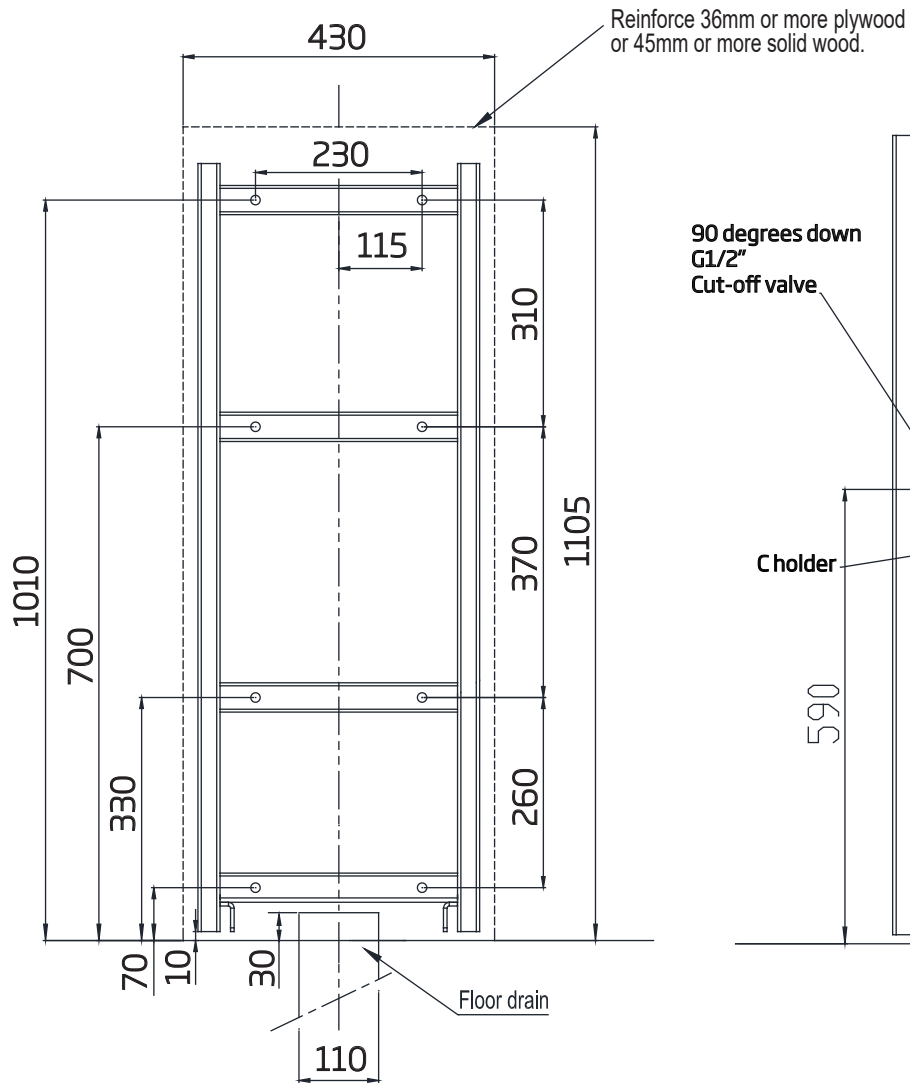
Gaius DUO, installation instructions.

17788 electrical high adjusting, floor drain.

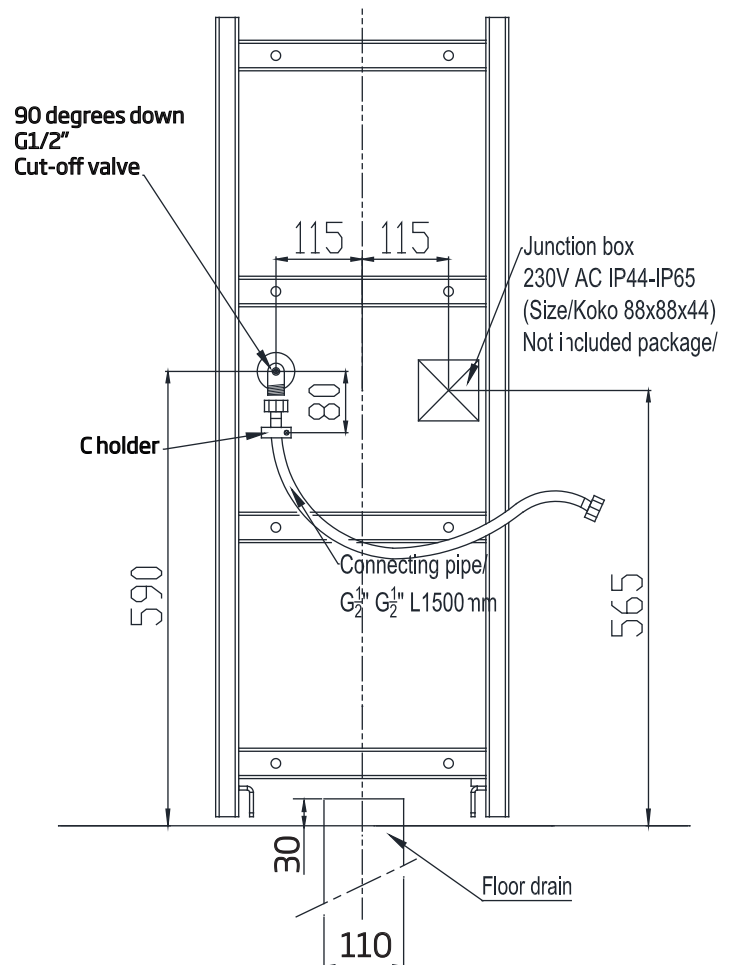


Save this installation instruction for after use. Sästä tämä asennusohje myöhempää käyttöä varten.

Gaius DUO, Attachment points, 8 pcs 17788



Gaius DUO, Water and electric 17788

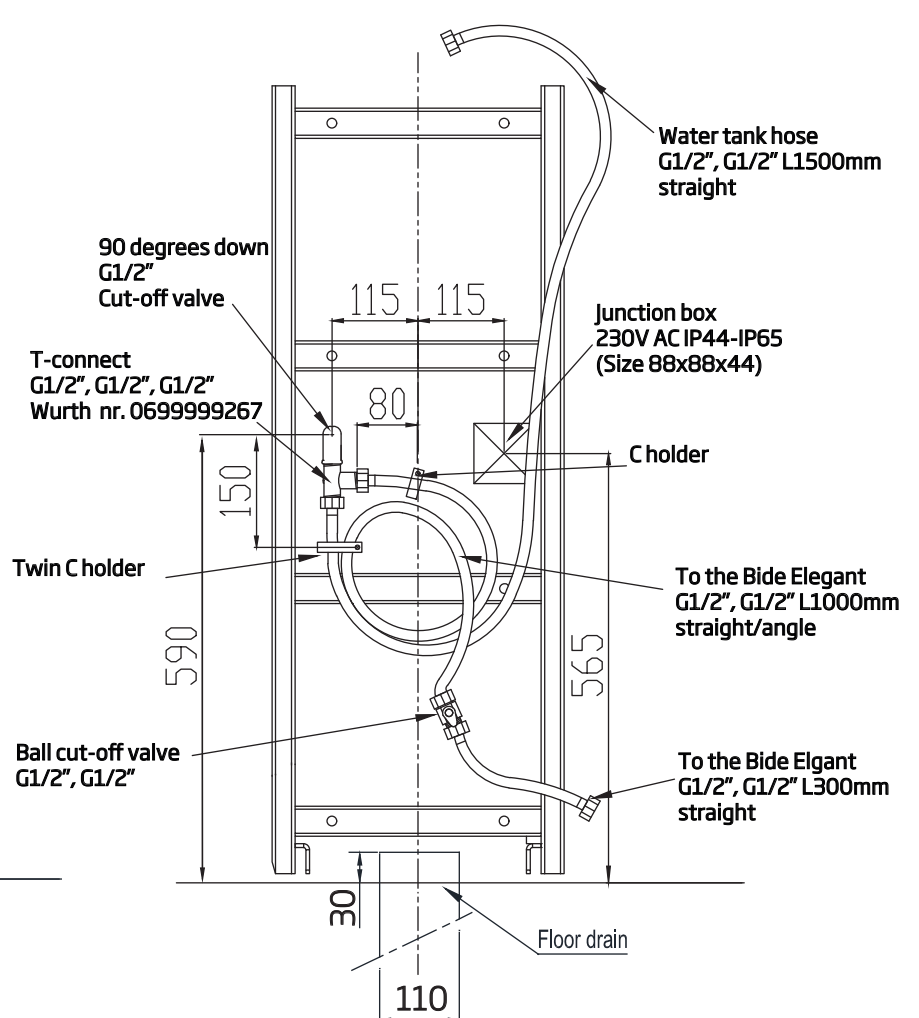
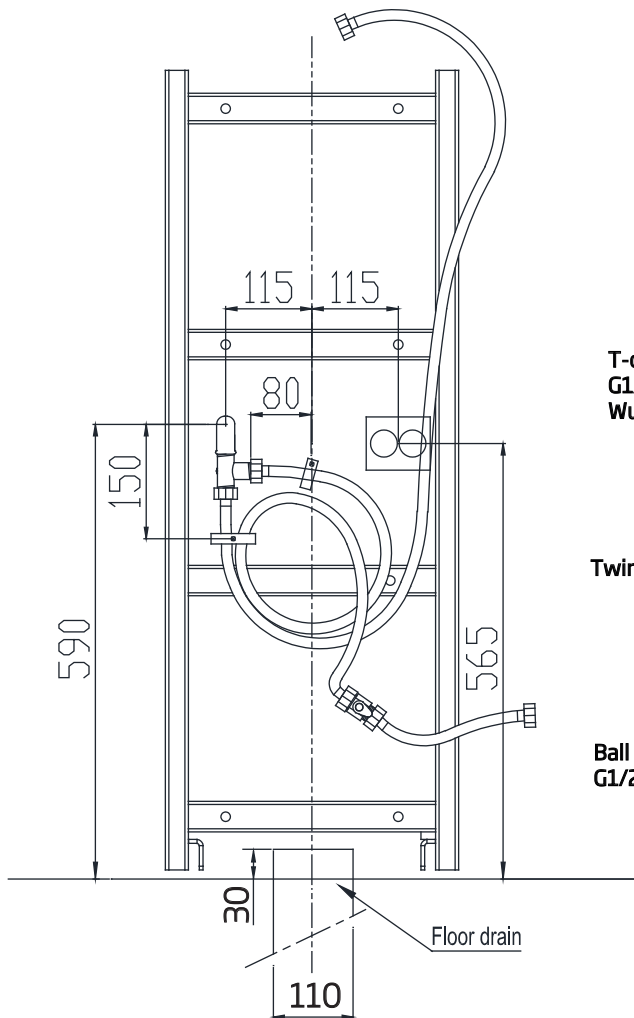


Gaius DUO, with Bide Elegant with 2 part wall plug

17788

Gaius DUO, with Bide Elegant with junction box 17788

Mentioned products does not belong in the package.



Structure

The product has undergone static load testing at 500 kg. The size of the wall mounting fixtures is 700x1110 mm. The fixtures must be affixed to solid structures. The fixtures must be mounted in accordance with the measurements specified in the diagram.

Electrics

The electrical junction box must be positioned to the right of the mid-line, as shown in the drawing. IP44 or higher junction box (not included)

The base comes with a 230V AC 10A socket.

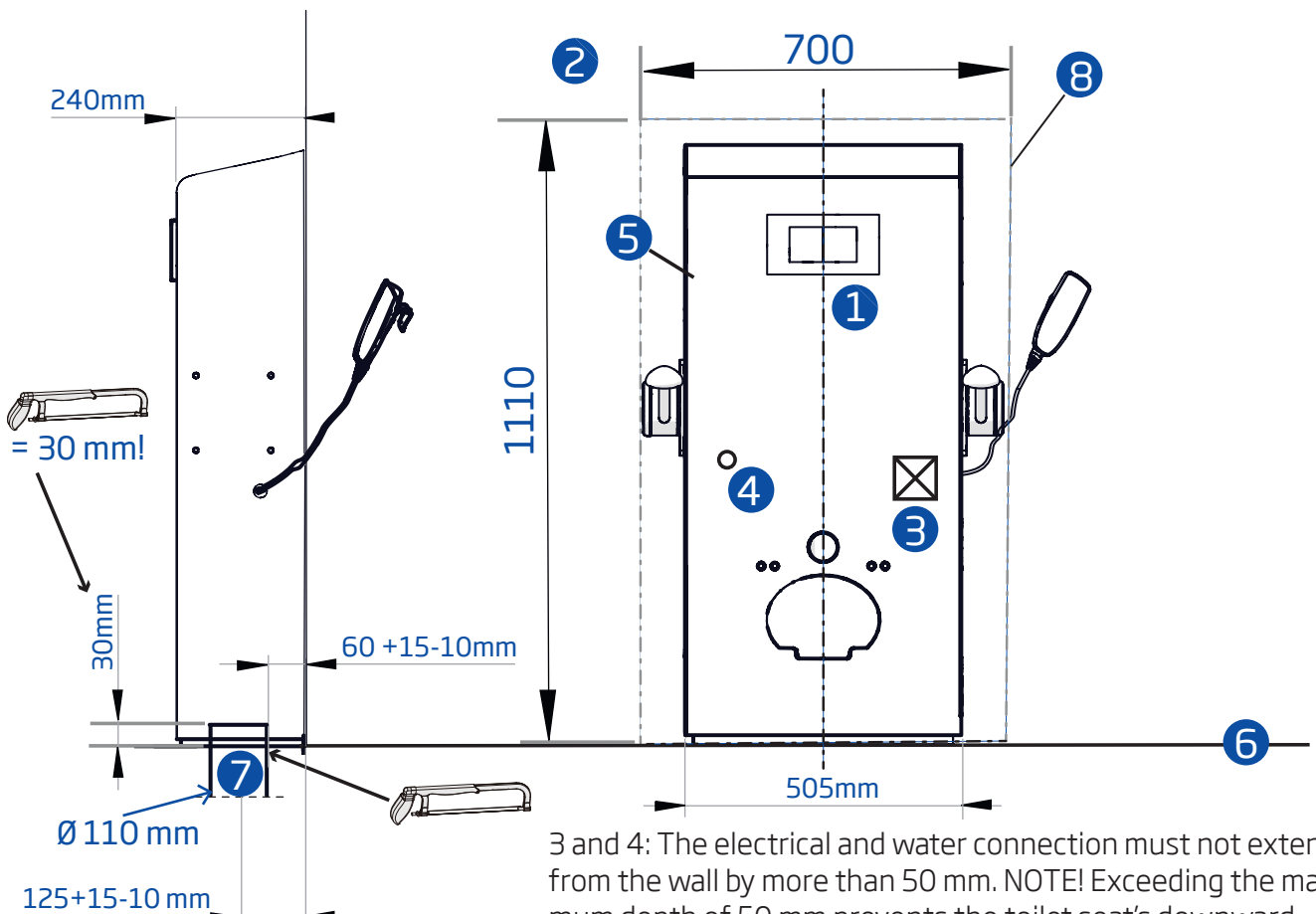
A residual-current device is recommended for the 230 V AC power supply.

A qualified electrician must perform the connection.

HVAC

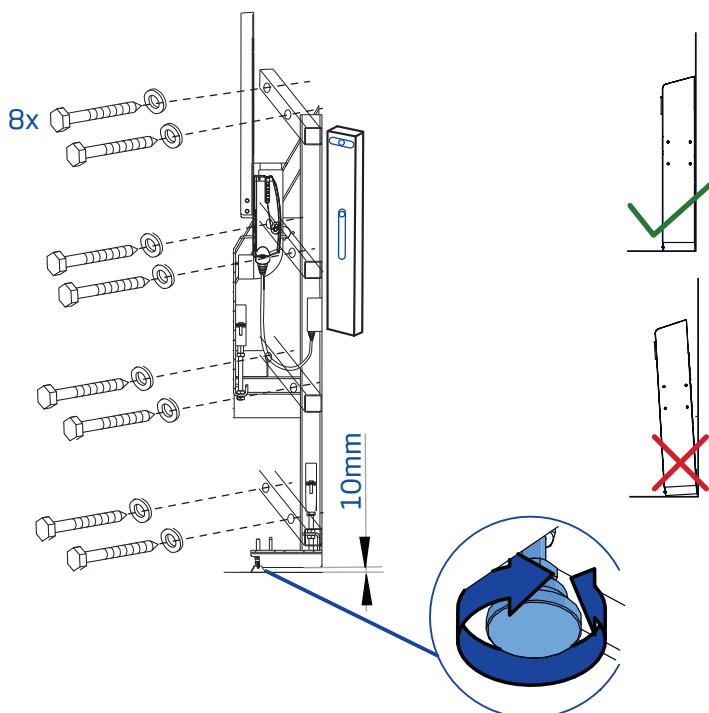
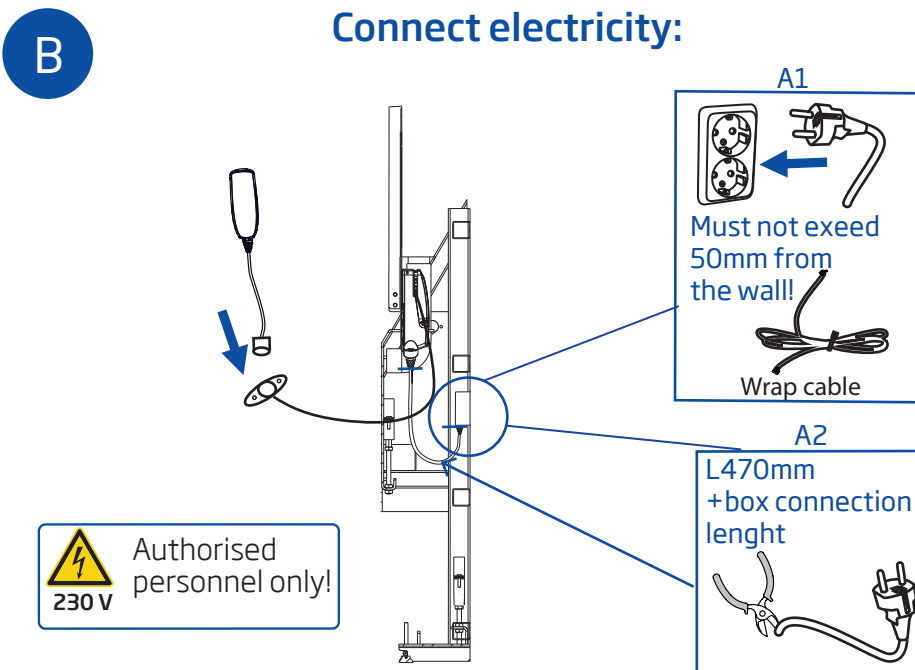
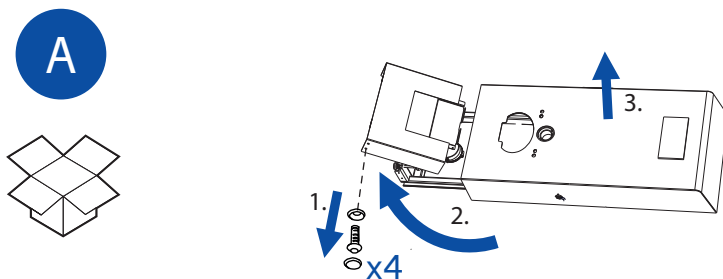
The water connection must be positioned to the left of the mid-line, as shown in the drawing.

1. Mid-line
2. Wall
3. Electrical connection
4. Water connection. Water supply with a shut-off valve equipped with a G1/2" external thread. Thread downwards
5. Wall mounting fixtures
6. Finished floor
7. Wastewater connection on the floor (Ø110 mm).
8. Reinforce area, plywood 36mm or over, solid wood 45mm or over.

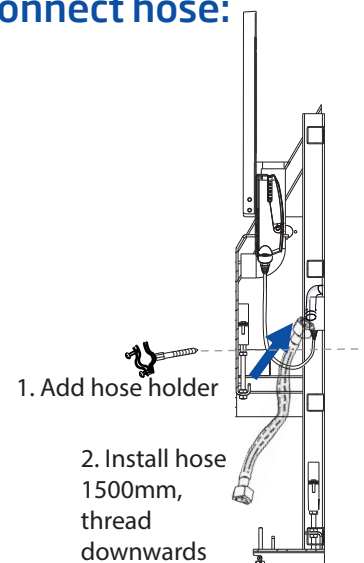


Note the dimensions!

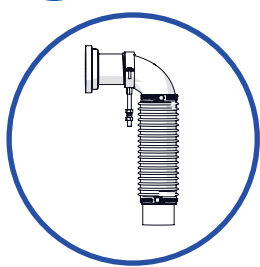
Notice!
 General instructions:
 Use motor or crank up and down to help installation.
 If frame don't go down by motor, press moving frame down by hand.



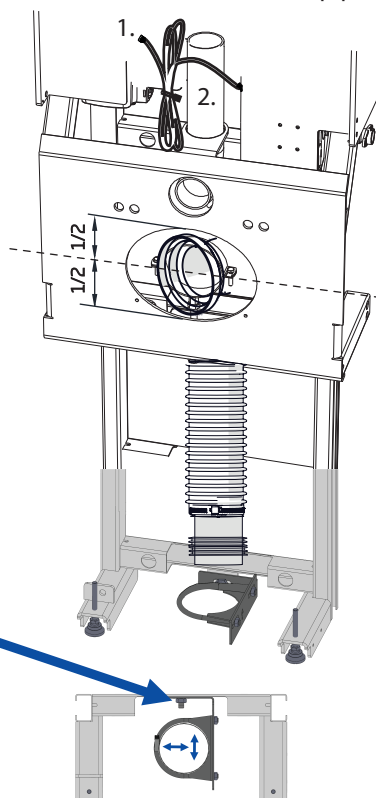
Connect hose:



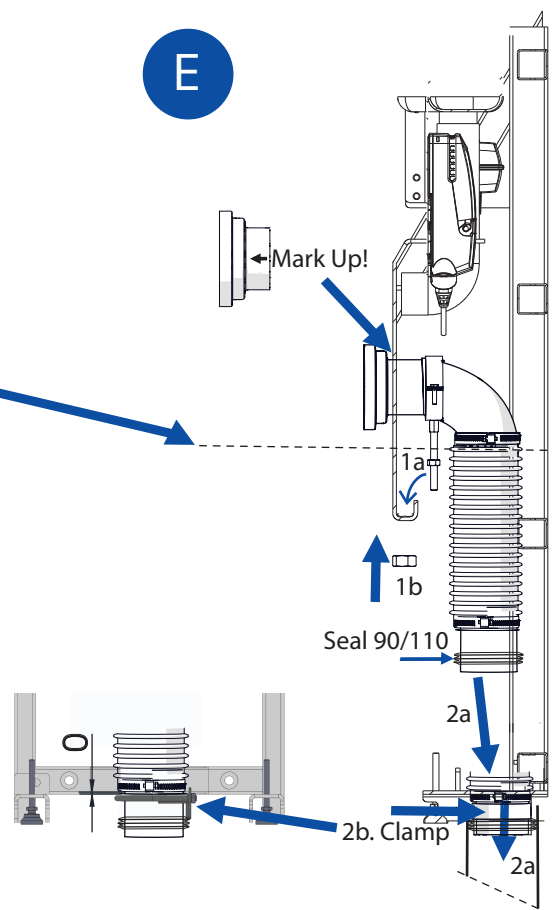
D



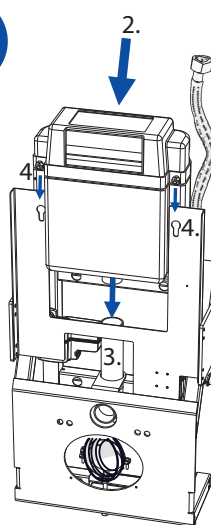
1. Wrap motor cable
2. Add water pipe



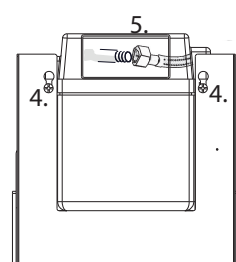
E



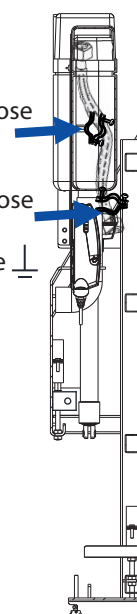
F



1. Pull out water hose, from right
2. Add water tank
3. Notice water pipe
4. Press water tank on it's place
5. Connect hose to waters tank



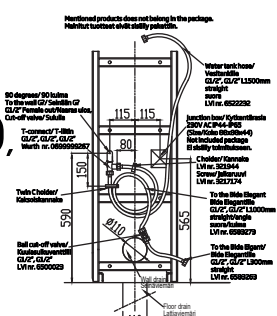
6. Tie on water hose to clamp
7. Tie on water hose to clamp with ground wire



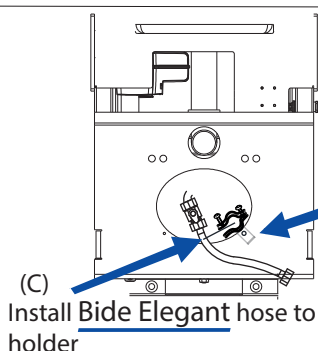
F1

Gaius DUO,
with Bide Elegant

17788



See the page 3.

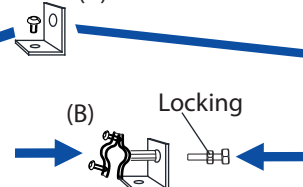


(C) Install Bide Elegant hose to holder

F2

Add water hose holder with Bide Elegant wc-bowl only!

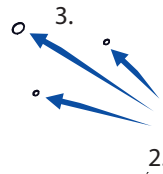
(A)



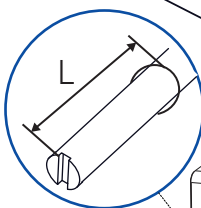
F3



**Mind
the water
pipes and
cables**

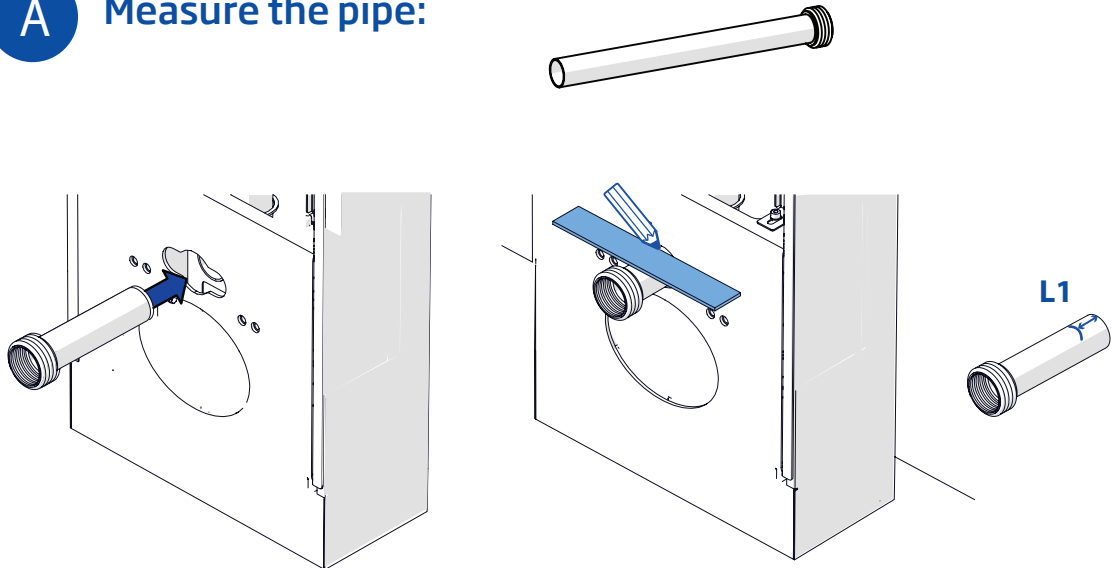


1. Disconnect hand control
2. Choose side to install hand control
3. Pop-up three pieces from cover A
4. Install plug on cover A

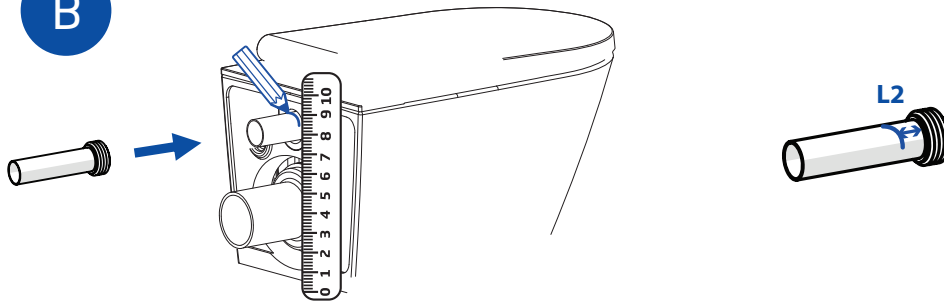


Add Lock ring
inside(1a.)

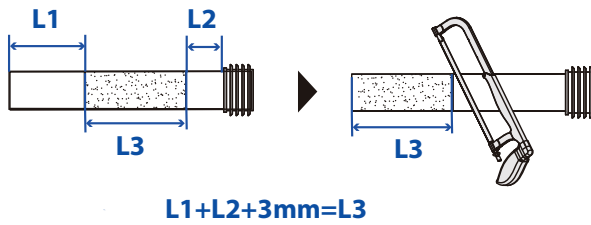
A Measure the pipe:



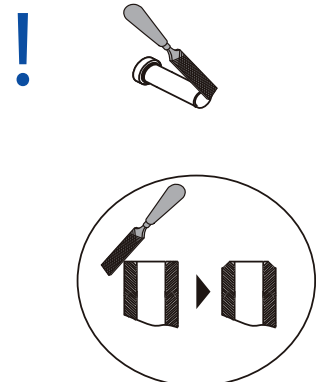
B



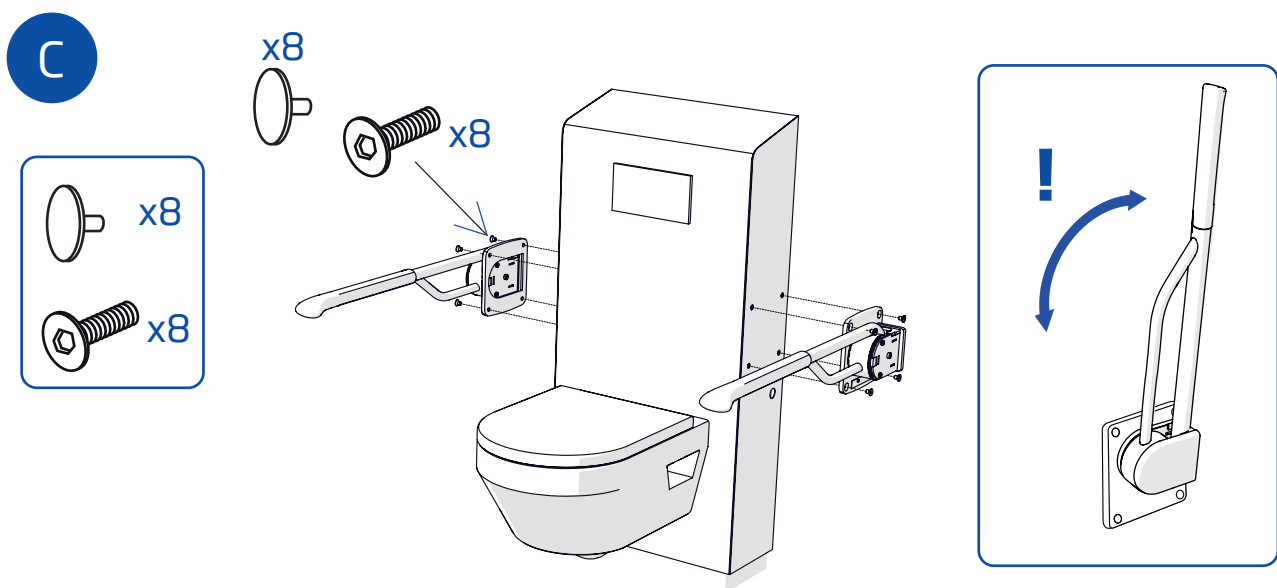
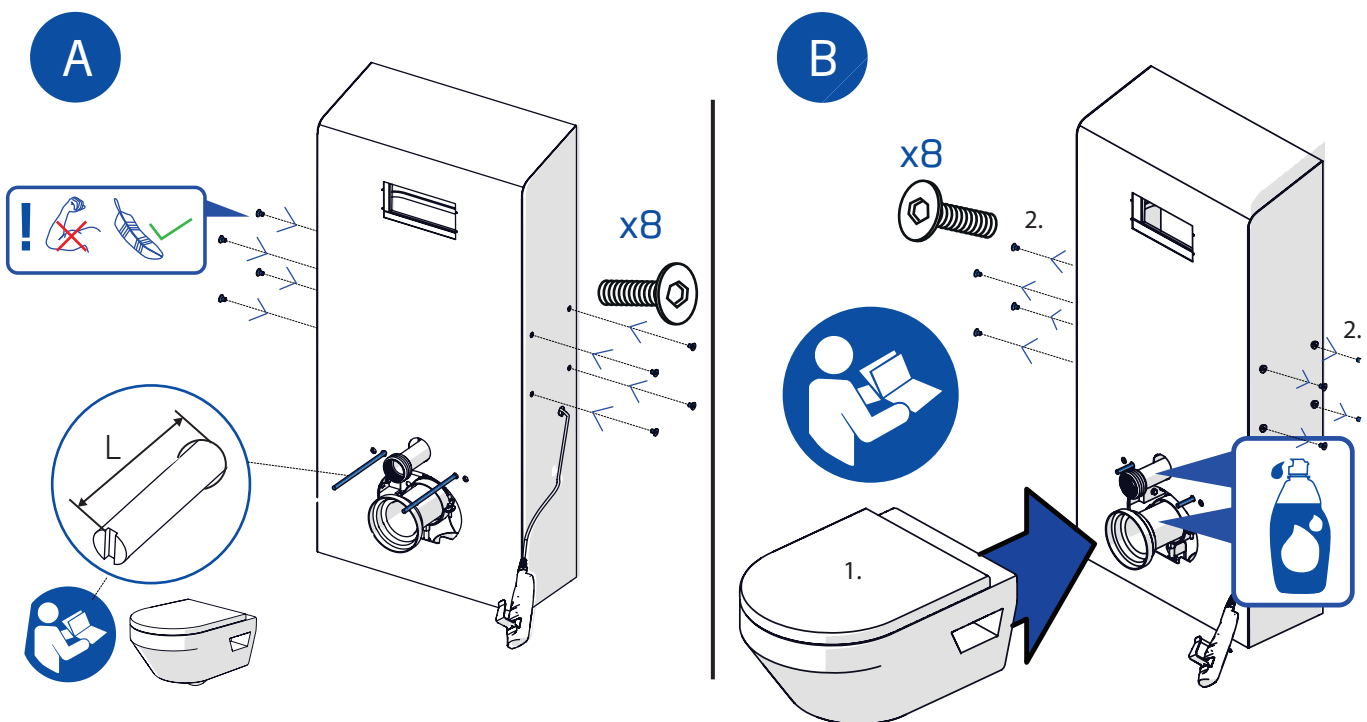
C



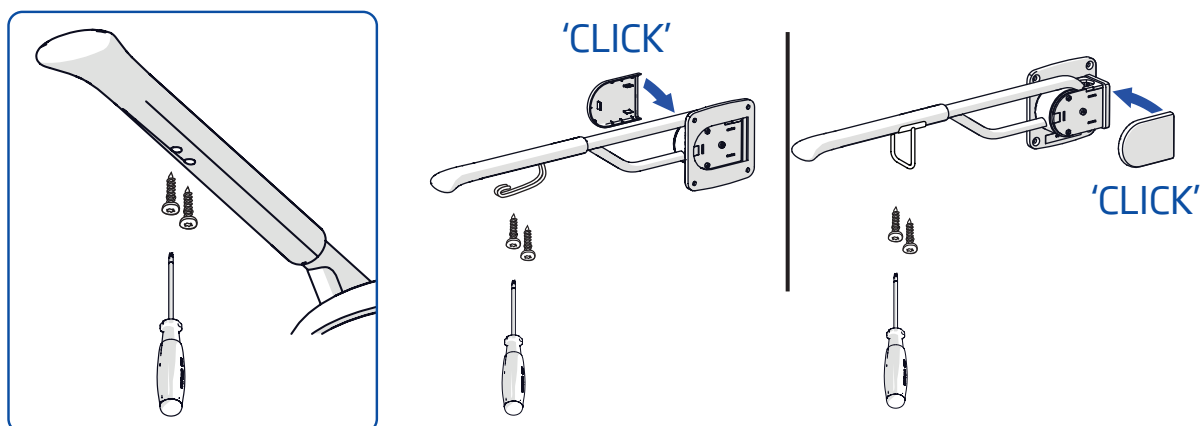
D



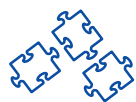
Mount the cover, seat and support rails:



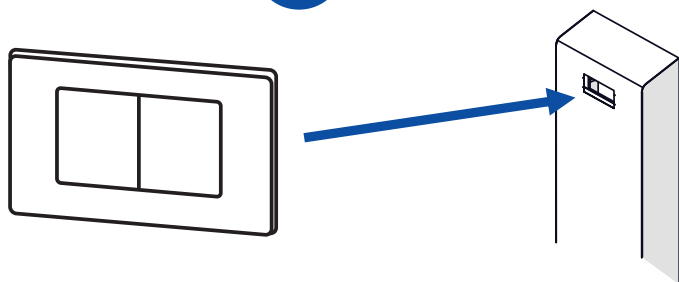
D Mount the toilet roll holder, remote control holder and covers:



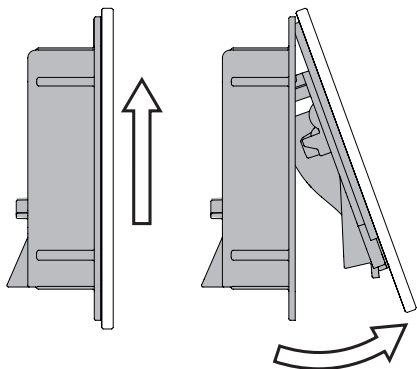
E1



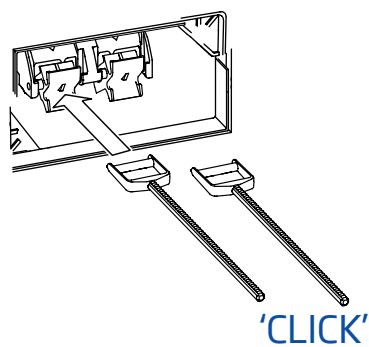
A



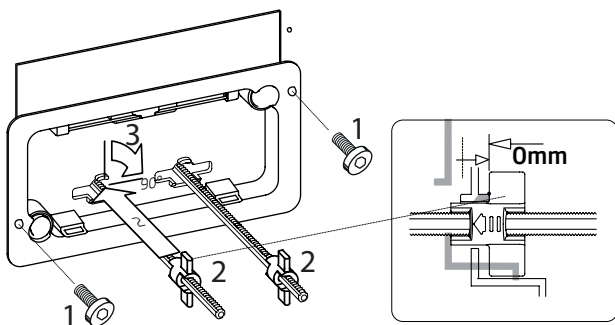
B



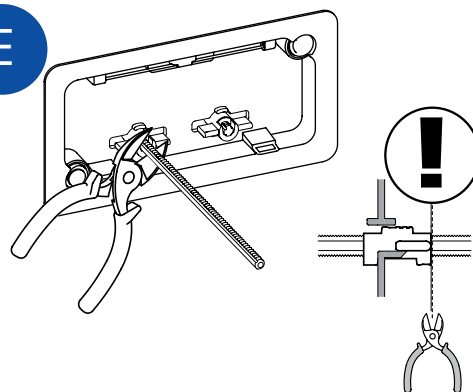
C



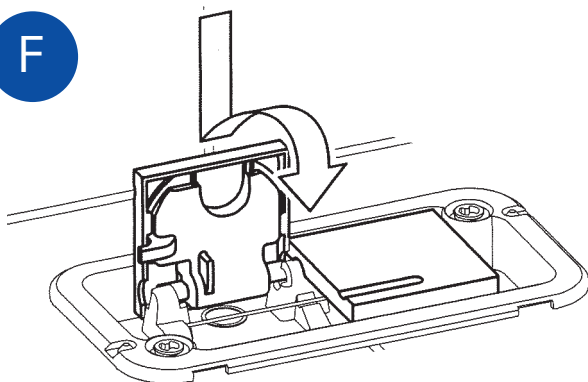
D



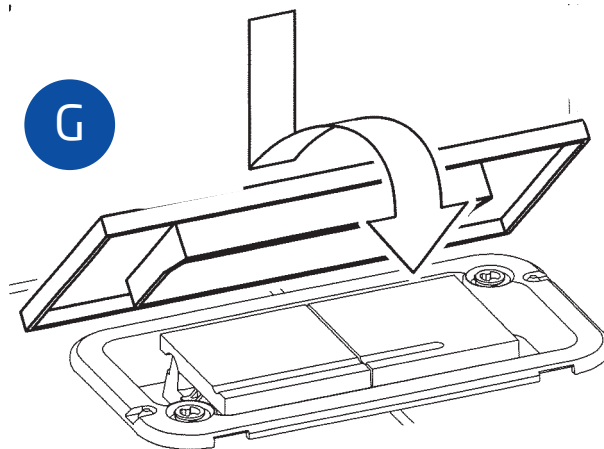
E

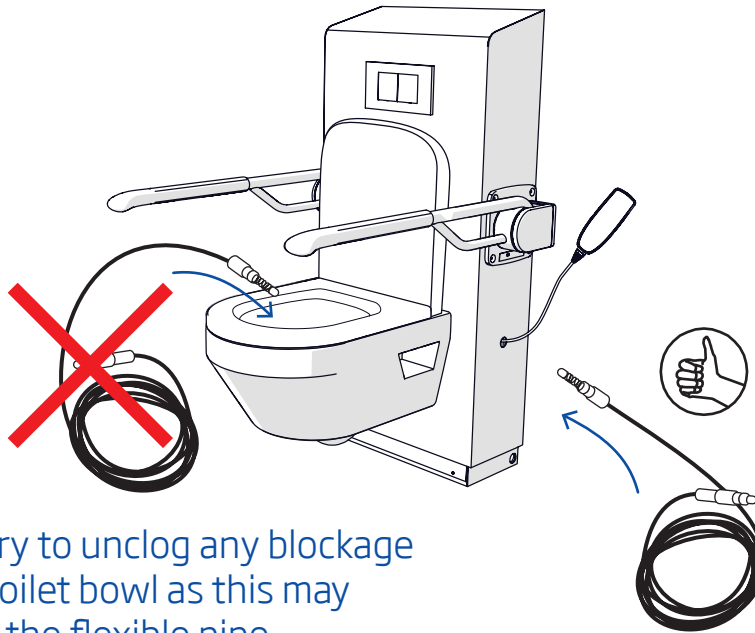


F



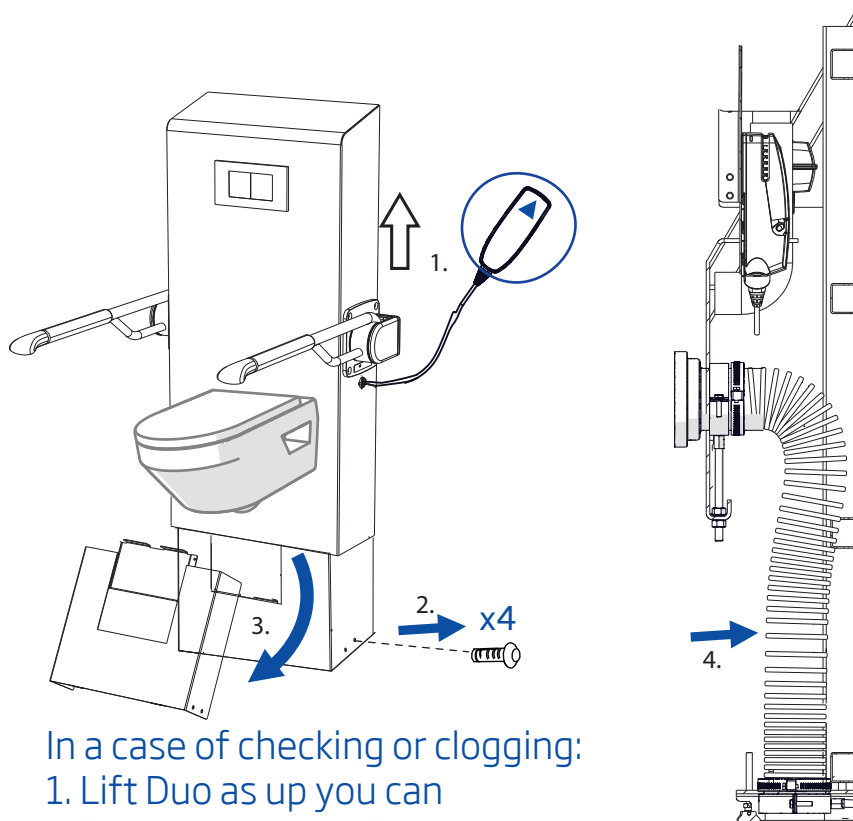
G





Do not try to unclog any blockage via the toilet bowl as this may damage the flexible pipe.

Always perform unclogging by moving the implement in the direction of the building's drain pipes.



In a case of checking or clogging:
1. Lift Duo as up you can
2. Remove screws, 4 pcs
3. Remove under cover
4. Squeeze black drain pipe