



oneΘall

**We are all
designed equal**



SUSTAINABLE SOLUTIONS

Korpinen products and solutions are economically and socially sustainable and long-lasting. Finland's most popular and best-selling accessible bathroom furniture stands the test of time and use. As a pioneer in accessibility, Korpinen offers a range of uncompromising, customised bathroom solutions. Our goal is to make spaces equal to all.

EASY TO DESIGN AND CONSTRUCT

Korpinen makes general purpose functional spaces easy to design and build. Every detail has been examined and tested to fit and complement the overall solution.

Drawings and guidelines designed and approved for different environments are available in our comprehensive object library at www.korpinen.com/suunnittelu-ja-rakentaminen

SAFE TO USE

Thanks to the well-thought-out design and intelligent details, the products are safe and ergonomic for both the users and their assistants. A comprehensive, carefully-considered solution of high quality is a safe choice.

Gaius bathrooms are designed to promote users' independence and unassisted physical activity. Every dimension, function and ergonomic solution has been carefully planned, making the bathroom extremely safe to use.

All details are designed with user safety in mind and they meet the relevant directive requirements. Required products are CE marked. The related declarations of conformity are available at www.korpinen.com/suunnittelu-ja-rakentaminen/ce-merkit-ja-hyvaksynnat/ce-merkinnat.

The furniture and accessories are made to withstand active use over a long lifespan and loads as required by relevant standards and environments.

ANTIMICROBIAL MATERIALS

A fully accessible bathroom is equipped with a variety of gripping surfaces that make it safer and easier to use. Micro-organisms from hands and other parts of the body can attach to surfaces and cause infections. Korpinen hygiene-safe products prevent infections from spreading through furniture. Antimicrobial fixtures promote hygiene safety and reduce MRSA and other infections in hospitals.

Our hygiene-safe product range includes antimicrobial basins, which are the cornerstone of an accessible bathroom and also the surface with most microbial growth in public washrooms. Hand-rails, elastomer-coated support rails and shower seats complement the selection.

Proven efficiency

Antimicrobial bathroom surfaces can destroy up to 99.9 % of harmful microbes. Surface materials have been tested according to ISO 22196 and found to meet required threshold values (JIS Z 2801). Thorough testing and antimicrobial properties have earned the products the Biocote Trusted Partner seal.

Comprehensive solutions for hygienic spaces

Korpinen bathroom fixtures are part of HygTech, an initiative seeking to increase the level of hygiene in shared indoor spaces. HygTech Alliance is the world's first comprehensive antimicrobial solution to manage hygiene in indoor environments. The Alliance is a partnership of five renowned Finnish companies: Korpinen, Abloy, Isku, Oras and Teknos.



HygTech Alliance

Active design, made to share.





Functional space assists the user

- A basin with a support rail, a storage cabinet, and hand and support rails form an entity where every component is placed and measured to promote independence and mobility.
- Hands can be washed and the bidet used while sitting on the toilet.
- The layout and spacing of the seat and the basin leaves enough room for the assistants and care personnel to work comfortably and ergonomically.
- Support rails on both sides of the seat allow the user to wear a chest support and enhance toilet privacy.
- The rail in front of the shower seat provides support when getting up and is able to withstand lateral loads.
- The door has no sill and slides gently inside the wall structure. This solution allows the fitting of furniture on both sides of the wall and thus saves space.

Intelligent, easy-to-use bathroom fixtures

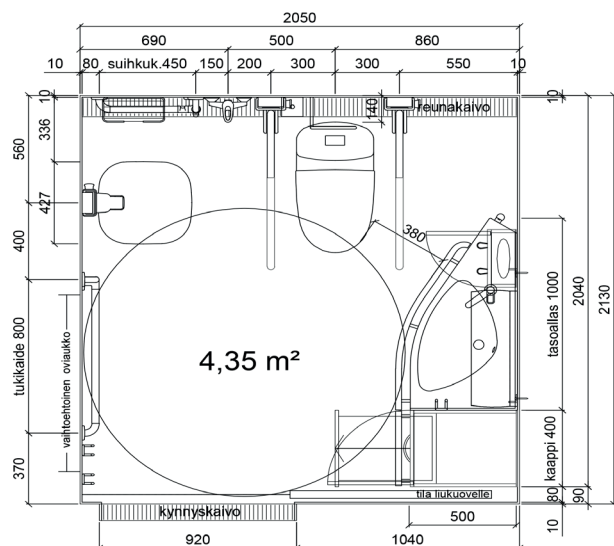
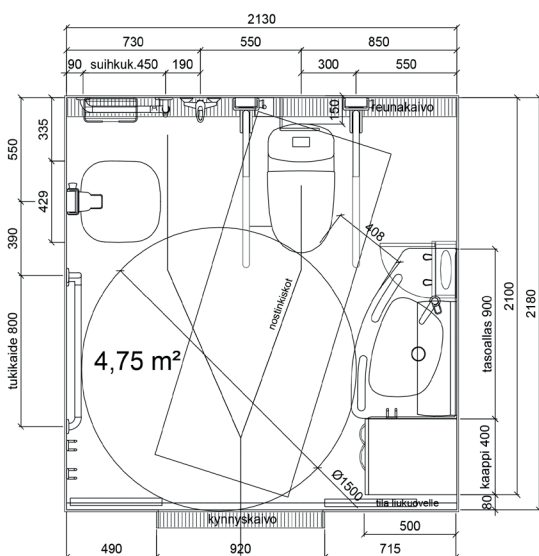
- Ergonomically designed products and non-slip elastomer surfaces add to comfort and safety.
- The rails are fitted with a counterbalance mechanism for effortless operation.
- Thanks to height-adjustable furniture and accessories, the solution accommodates all users regardless of their physical attributes.
- Colourful (RED/GREY/YELLOW) surfaces and strips on rails, supports and fixtures facilitate spatial perception.
- The single-rail height adjustment system ensures that the shower seat is easy to place at the desired height.
- Thanks to the structure and materials used, the furniture and accessories are always hygienic without protective casings.
- Storage cabinets are made of moisture-resistant laminate suitable for wetrooms as per EN 312.
- Antimicrobial surfaces stop microbes from spreading and prevent infectious diseases.
- Lighting is indirect and flicker-free, and does not trigger migraine or epileptic seizures.

Gaius Original key products

- Sense basin
- Sense shower seat
- Handrail Solo/Modular/Animo 800 + 600 mm 90°
- Shower support Solo/Modular/Animo 440/450 + 1200 mm 90°
- Regal support rail 900 mm, height-adjustable
- Gaius cabinets
- Gaius LED light
- Mirror
- Detergent baskets and hooks
- Glove box holder
- Gaius sliding doors and wall structures
- DUO height-adjustable toilet seat

Gaius Original Classic products

- Original basin / Original Mini basin
- Gaius shower seat
- Stay support rail 900 mm

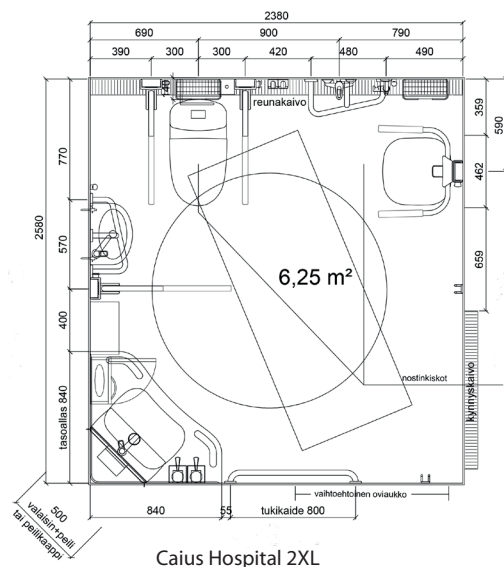
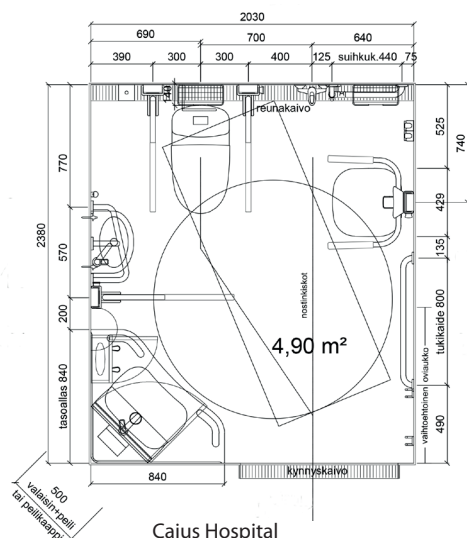


FUNCTIONAL AND SAFE BATHROOM UNIT FOR HOSPITALS AND HEALTH CARE FACILITIES



GAIUS CARE HOSPITAL

The Gaius Care Hospital is a highly refined unit in which every dimension, function and ergonomic solution has been carefully planned to accommodate those in hospitals and special care units. It is fully accessible and promotes patient mobility and occupational ergonomics. The space is large enough for a shower bed, various lifting equipment and two assistants. For Gaius Hospital model rooms, go to www.korpinen.com/suunnittelu-ja-rakentaminen



Designed comfort for users and care personnel

The Gaius Care Hospital bathroom solution allows for a safe and smooth transition from one operation to the next for people needing assistive technology and those assisting them. This functional unit is formed by the following: a basin with a support rail; a toilet seat and surrounding support rails; and a shower seat and its rails. The placement and distances of the unit improve mobility in patients and promote occupational ergonomics.

The seat is integrated with support rails on both sides, which allows for the use of a chest support and adds to toilet privacy. An electrically adjustable toilet seat accommodates users of different heights. The unique E-shaped handrail can be gripped in a variety of ways when getting up from the toilet or the shower seat. The door has no sill and slides gently within the wall structure. The solution allows the fitting of furniture on both sides of the wall and thus saves space..

Safe and easy-to-use bathroom fixtures

- Antimicrobial surfaces stop microbes from spreading and prevent infectious diseases.
- Thanks to their structure, materials and the seamless handrail surfaces, the furniture is highly hygienic and easy to keep clean.
- Silicone cover plates on the handrails can be cleaned without tools.
- Thanks to height-adjustable furniture and accessories, the solution accommodates all users regardless of their physical attributes.
- Ergonomically designed products and non-slip elastomer surfaces add to comfort and safety.
- Colourful (RED/GREY/YELLOW) surfaces on hand and support rails facilitate spatial perception.
- The rails are fitted with a counterbalance mechanism for effortless operation.
- Support rails are safe and designed to withstand vertical and lateral loads when a user gets up from the seat.
- The single-rail height adjustment system ensures that the shower seat is easy to place at the desired height.
- Lighting is indirect and flicker-free, and does not trigger migraine or epileptic seizures.
- The products are ESD compatible.

Gaius Care Hospital key products

- Sense corner basin (Gaius Care Hospital bathroom can also be fitted with the Hospital basin with elastomer handrails on both sides)
- Sense shower seat
- Solo shower support 1200 mm / 440 + 1200 mm 90°
- Solo handrail 800 mm
- Solo E handrail 500 mm
- Regal support rail 800 mm, height-adjustable
- Mirror/Mirror cabinet
- Gaius Universal / LED light Detergent baskets and hooks
- Glove box holder and Dispenso dispensers
- DUO height-adjustable toilet seat
- Gaius sliding door

Patient room key products

- Life basins, Lyon basin, RST-line dispensers and dustbins

Key products in reception areas, operating rooms and public spaces

- Ergonomic Doctor S/M/L basins
- Ergonomic Surgery basin
- RST-line dispensers and dustbins

FULLY ACCESSIBLE AND AESTHETIC TOILET ROOM FOR PUBLIC BUILDINGS

Gaius Public provides a high-quality solution for sanitary rooms and multi-functional accessible toilets located in public buildings. It is suitable for all, including those using a wheelchair or a walker.

One viable solution for many different needs

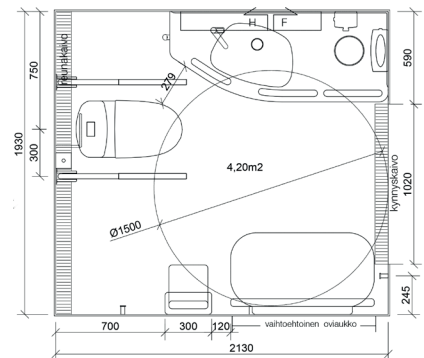
The solution takes into account the requirements and versatility of public spaces. A basin with support rails, and the location and distances of other support structures are designed to promote mobility and independence. The basin has a waste hole and a cabinet fitted with a bin. The tap and the toilet paper holder are close at hand when sitting on the toilet. A baby changing station and a child seat are available to complement the solution. Two Gaius Public units, positioned as a mirror image of one another, solve four interior space needs: ladies' and men's rooms, accessible toilet and a baby care room.

Hygienic safety

Antimicrobial coating on fixtures provides an easy and effective way to prevent harmful microbes and infections from spreading in public spaces. The hygiene-safe product line includes antimicrobial basins, which is where most microbial growth is likely to be found in public restrooms. Painted handrails and elastomer-coated support rails complement the range.

Aesthetic durability

Furniture and fixtures used in public spaces must be durable and have long life cycles. Korpinen basins are made of durable cast marble and composite to stand the test of time and wear. All mounting hardware is designed to withstand heavy loads (400 kg). Support rails are easy to use and hard-wearing. Elegant design and stylish, lacquered paper towel and toilet paper dispensers and other RST products add to the aesthetics of the solution.



Gaius Public key products

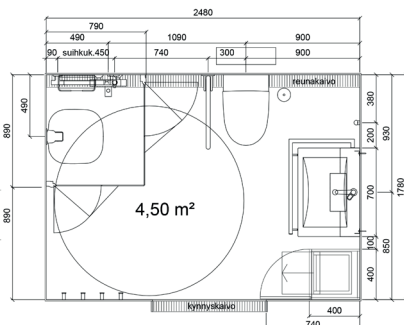
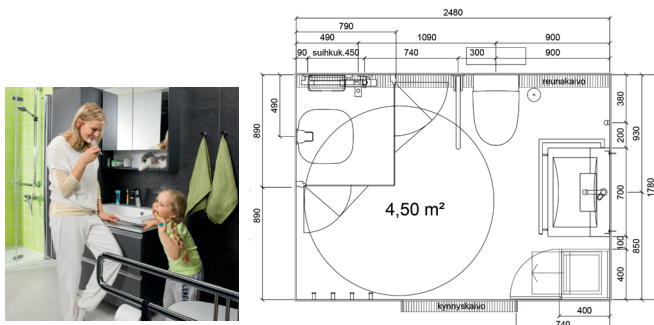
- Sense Public basin / Original Public basin
- Regal support rail
- Mirror
- Gaius Universal / LED light
- Baby changing station
- Child seat
- RST-line products

Alternatively, an accessible washroom can be realised with the Aino basin or Sense corner basin designed for those in a wheelchair.

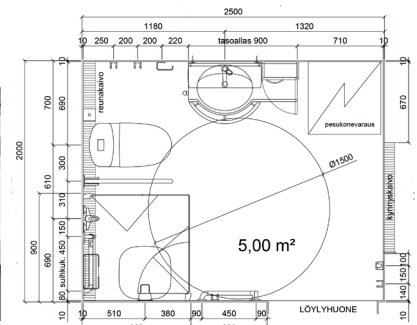
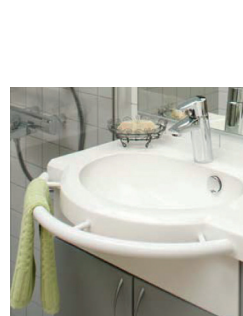
SOLUTIONS FOR INDEPENDENT LIVING AND ADDED MOBILITY

Gaius Life – durable bathroom solutions that support independent living at home. Gaius Life bathrooms are meticulously designed down to the last detail. The solutions are scalable and customisable depending on the space and individual needs. Robust, wall-mounted fixtures facilitate cleaning. Bathroom furniture can be modified and supplemented over time. For example, the basin cabinet is easy to remove in order to create space for a wheelchair. Light is reflected from the ceiling and the mirror, and thus indirect and pleasant.

Gaius Life – Modern solution for unobstructed living



Gaius Senior – Bathroom that adapts to life



Gaius Life key products

- Life basin
- Regal support rail
- Modular support rail
- Mirror
- Gaius light
- Detergent baskets and other accessories

Gaius Senior key products

- Senior basin
- Regal support rail
- Modular support rail
- Mirror
- Gaius light
- Detergent baskets and other accessories

BASINS

Sense washbasin

The basin is curved and thus easy to access and use. It is modern by design and made of durable and ecological composite. The seamless and entirely-coated surface is hygienic and extremely easy to clean. Fixed rails provide support and can be fitted with colour strips that facilitate spatial perception. The front edge is angled to make sure splashes stay inside the basin. The basin conforms to the European PRM standard; the space below is 300 mm deep and 670 mm high to allow wheelchair access. The basin is delivered with a toilet paper holder, a fixed water trap and mounting hardware. The basin is fixed to the wall with no separate supports required.

Material: non-reflective white antimicrobial composite

Dimensions: 900 x 576 mm

Strip colour options: red, grey

Height adjustment: mechanical, hand crank, electric, adjustment range 200 mm

Maximum load: 400 kg



62023 G/R right-handed with overflow

62034 G/R left-handed with overflow

62022 G/R right-handed without overflow

62033 G/R left-handed without overflow

62333 height adjustment rails

6243 hand crank height adjustment

65133 electric height adjustment

Sense corner basin

The inward curve allows better access and helps when leaning over the basin. Fixed, cast rails at the front edge work as supports. The basin has no seams and is extremely hygienic. Conforms to the European PRM standard. The front edge is angled to make sure splashes stay inside the basin. The basin is delivered with a toilet paper holder, a fixed water trap and mounting hardware. The basin is fixed to the wall with no separate supports required.

Material: non-reflective white antimicrobial composite

Dimensions: 840 x 840 mm

Strip colour options: red, grey

Height adjustment: mechanical, hand crank, electric, adjustment range 200 mm

Maximum load: 400 kg

65001 G/R with overflow

65000 G/R without overflow

6234 height adjustment rails

6244 hand crank height adjustment

65111 electric height adjustment



Sense Plus / Public basin

Longer (1400 mm) Sense Plus and Public are extra spacious. The basin is delivered with a toilet paper holder, a fixed water trap and mounting hardware. The Public basin has a waste hole connected to a bin in the cabinet below.

Material: non-reflective white antimicrobial composite

Dimensions: 1400 x 576 mm

Strip colour options: red, grey

Height adjustment: mechanical, hand crank, electric



62081 G/R Plus, right-handed with overflow

62082 G/R Plus, left-handed with overflow

62085 G/R Public, right-handed with overflow

62086 G/R Public, left-handed with overflow

6234 height adjustment rails

6249 hand crank height adjustment

65155 electric height adjustment

Original basin

The Original is a classic with all mobility enhancing elements. A rail runs the entire length of the basin and provides support. The basin is curved and thus easy to access and use. The basin is delivered with a toilet paper holder, a fixed water trap and mounting hardware.

Material: white antimicrobial cast marble and antimicrobial painted steel rail

Dimensions: 1000 x 500 mm, total depth to outer edge of the rail 575 mm

Rail colour options: white, red, yellow, grey

Height adjustment: mechanical, hand crank, electric, adjustment range 200 mm

Maximum load: rail 250 kg, basin 400 kg



6202 P/K/H right-handed

6203 P/K/H left-handed

6232N height adjustment rails

6236N hand crank height adjustment

6513N electric height adjustment

Plus basin

The Longer (1500 mm) Original Plus is extra spacious. Wall-mounted cabinet can be fitted below the wide end. The basin is delivered with a toilet paper holder, a fixed water trap and mounting hardware.

Material: white antimicrobial cast marble and antimicrobial painted steel rail

Dimensions: 1500 x 500 mm

Rail colour options: white, red, grey

Height adjustment: mechanical, hand crank and electric



62001 P/K/H right-handed

62011 P/K/H left-handed

6232N height adjustment rails

6240N hand crank height adjustment

6515N electric height adjustment

BASINS

Public basin

The Public Basin has a waste hole for public bathrooms. The fixed rail helps those in a wheelchair to pull themselves closer to the basin, and provides support while standing up from the toilet seat or in front of the basin. The basin includes a waste hole which fits the Public wall-mounted lower cabinets. Basins are delivered with a fixed water trap, an overflow set, mounting hardware and a toilet paper holder.

Material: white or grey granite, antimicrobial cast marble and antimicrobial painted steel or stainless steel rail
 Dimensions: 1500 x 500 mm
 Rail colour options: grey
 Height adjustment: mechanical, hand crank, electric



62012 right-handed, grey granite, stainless steel rail
62013 left-handed, grey granite, stainless steel rail
62014 / 62014 H right-handed, white, stainless steel / grey rail
62015 / 62015 H left-handed, white, stainless steel / grey rail
6232N height adjustment rails
6240N hand crank height adjustment

Mini basin

The Original Mini basin is for smaller bathrooms and toilets. The familiar curved shape makes the basin easy to access and use. Basins are delivered with a fixed water trap, an overflow set, mounting hardware and a toilet paper holder.

Material: white antimicrobial cast marble and antimicrobial painted steel rail
 Dimensions: 800 x 400 mm, total depth to outer edge of the rail 475 mm
 Rail colour options: white, red, yellow, grey
 Height adjustment: mechanical, hand crank



6302 P/K/H right-handed
6303 P/K/H left-handed
6232N height adjustment rails
6241N hand crank height adjustment

Luna basin

The Luna basin is an aesthetic and functional cast marble bidet for confined spaces. It is a durable, easy-care and hygienic choice for hospitals, public buildings and private bathrooms.

Material: white antimicrobial cast marble
 Dimensions: 390 x 270 x 90 mm



6509 right-handed
6510 left-handed

Hospital basin

Removable support rails are slightly elevated from the edge and support elbows when using the basin. The inward curve allows better access and helps to bend over the basin. Elastomer, high-friction rails feel warm to the hand and do not slip even when wet. Rail can support up to 160 kg. Basins are delivered with a fixed water trap, an overflow set and mounting hardware.

Material: white antimicrobial cast marble and elastomer rail
 Dimensions: 800 x 800 mm
 Rail colour options: white, red, yellow, grey
 Height adjustment: mechanical, hand crank



6500 white with overflow, red rail
6501 white with overflow, yellow rail
6502 white with overflow, grey rail
6517 white without overflow, red rail
6518 white without overflow, yellow rail
6519 white without overflow, grey rail
6232N height adjustment rails
6237N hand crank height adjustment
6511N electric height adjustment

Lyon basin

The Lyon basin is a beautiful, durable and easy-to-clean basin for patient rooms, reception areas, public spaces and private bathrooms.

Material: white antimicrobial cast marble
 Dimensions: 600 x 525 x 140 mm



6406 no support rail, front edge elevation 100 mm

Aino basin

The Aino basin is specially designed for those in a wheelchair. There is room for knees, plenty of tabletop space on the sides and support for elbows. It is a durable, easy-care and hygienic choice for hospitals, special care units, public buildings and private bathrooms. Developed in cooperation with the Käpyla Rehabilitation Centre SYNAPSIA of the Finnish Association of People with Physical Disabilities.

Material: white antimicrobial cast marble
 Dimensions: 800 x 555 mm



6400 Aino basin
6232N height adjustment rails
6239N hand crank height adjustment
6516N electric height adjustment

BASINS

Ergomedic surgeon's basin

Co-designed by Korpinen & Euma

Surgeon's handbasin with two Dispenso dispensers and mounting hardware.

Material: white antimicrobial composite
Dimensions: W 790 x D 598 x H 926 mm

622600 Surgery basin



Life basin

The Life basin is a modern and aesthetic cast marble basin for domestic bathrooms. Solid stainless steel or chrome rail promotes mobility and doubles as a stylish towel rack. Basin cabinets complement the solution. Delivered with mounting hardware, a fixed water trap and an overflow set. Life basins are fitted with an overflow hole.

Material: white antimicrobial cast marble
Rail colour options: stainless steel or chrome
Dimensions: 600 x 400 mm, 700 x 490 mm, 900 x 490 mm, 1200 x 490 mm



- 6720** Life 600, straight chrome rail
- 6721** Life 600, right-handed, L-shaped chrome rail
- 6722** Life 600, left-handed, L-shaped chrome rail
- 6700** Life 700, straight chrome rail
- 6701** Life 700, straight stainless steel rail
- 6702** Life 700, right-handed, L-shaped stainless steel rail
- 6703** Life 700, left-handed, L-shaped stainless steel rail
- 6706** Life 900, right-handed, straight stainless steel rail
- 6707** Life 900, left-handed, straight stainless steel rail
- 6708** Life 900, right-handed, straight chrome rail
- 6709** Life 900, left-handed, straight chrome rail
- 6710** Life 1200, right-handed, straight chrome rail
- 6711** Life 1200, left-handed, straight chrome rail

Senior basin

A beautifully-shaped classic cast marble basin for private bathrooms. The rail can be fitted with attention-colour strips or made of chrome. Senior cabinets compliment the solution. Delivered with mounting hardware, a fixed water trap and an overflow set.

Material: antimicrobial white cast marble
Dimensions: 600 x 443 mm, 750 x 443 mm, 900 x 443 mm, 1200 x 443 mm
Rail colour options: grey, red, yellow, chrome
Maximum rail load 240 kg



- 6401 H/P/K/Kromi** Senior 600
- 6407 P** Senior 750
- 6402 H/P/K/Kromi** Senior 900 right-handed
- 6403 H/P/K/Kromi** Senior 900 left-handed
- 6404 / 6404 Kromi** Senior 1200

Ergomedic Doctor M basin

Co-designed by Korpinen & Eumar

Doctor M basin with a mirror, two Dispenso dispensers and mounting hardware. Basin size options: S/M/L.

Material: antimicrobial white composite
Dimensions: W 400 x D 499 X H 1317 mm

622501 Doctor M basin



SUPPORT RAILS

Regal support rails

Modern Regal support rails are ideal for places where ease of use, advanced functionality and hygienic safety are required. Light to lift up and set down with no danger of uncontrolled movement. User-specific, easy height adjustment with no tools. Seamless profile does not gather dust or dirt and is easy to keep clean.

Material: frame of antimicrobial painted white steel, antimicrobial non-slip elastomer

Rail colour options: red, grey, yellow, chrome
Dimensions: wall-mounted 770 and 870 mm
height-adjustable 800 and 900 mm



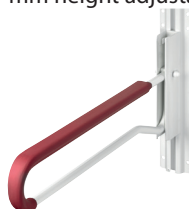
- 20105G/R/Y** Regal 770 mm wall-mounted
- 20203G/R/Y** Regal 870 mm wall-mounted
- 20101C** Regal 800 mm wall-mounted chrome
- 20202C** Regal 900 mm wall-mounted chrome
- 20106G/R/Y** Regal 800 mm height-adjustable
- 20204G/R/Y** Regal 900 mm height-adjustable
- 20102C** Regal 830 mm height-adjustable chrome

Stay support rails

A Korpinen classic. The popular and timeless Stay support rail adapts to many spaces and uses. Durable, multifunctional structure. Stay support rails can be lifted up and locked in place. The surface is made of comfortable, non-slip elastomer.

Material: antimicrobial white epoxy-painted steel, antimicrobial non-slip elastomer

Rail colour options: red, grey, yellow
Dimensions: 800 and 1000 mm fixed support rails, 800 and 900 mm height adjustable



- 10101 P/K** Stay 1, 800 mm wall-mounted
- 10102 P/K** Stay 2, 800 mm wall-mounted with a support leg
- 10103 P/K** Stay 3, 1000 mm wall-mounted with a support leg
- 10104 P/K** Stay 4, 800 mm floor-mounted
- 10111 P/K** Stay 11, 800 mm floor-mounted
- 10113 P/K** Stay 13, 800 mm wall-mounted
- 10115 P/K** Stay 15, 900 mm wall-mounted
- 10123G/R/Y** 800 mm express height adjustable
- 10125G/R/Y** 900 mm express height adjustable

HANDRAILS

Solo handrail

A single handrail. Oval shape allows for a natural and firm grip. The rail is seamless and antibacterial, and thus ideal for high-hygiene applications. Rails which double as shower handrails are fitted with an ergonomically designed shower head holder. Delivery includes mounting hardware.

Material: aluminium painted with antimicrobial paint; cover plates of elastic, easy-to-clean silicone

Colour options: grey, red and white; cover plates: grey, red and white



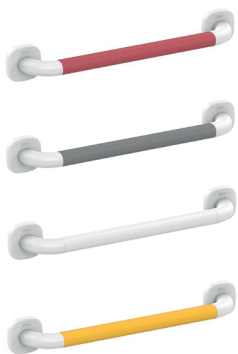
- 16800G/R/W** length 400 mm
- 16801G/R/W** length 600 mm
- 16802G/R/W** length 800 mm
- 16803G/R/W** length 790 + 790 mm
- 16804G/R/W** length 1200 mm, 1 shower head holder
- 16805G/R/W** length 440 + 1200 mm 90° + shower head holder, right
- 16806G/R/W** length 440 + 1200 mm 90° + shower head holder, left
- 16807G/R/W** length 800 + 600 mm, right
- 16808G/R/W** length 800 + 600 mm, left
- 16234G/R/W** length 440 + 590 mm 145°, right
- 16235G/R/W** length 440 + 590 mm 145°, left

Modular handrail

Modularly structured support oval handle. Surfaces are antimicrobial and seamless.

Material: aluminium painted with antimicrobial paint, end parts of durable plastic, cover plates of elastic, easy-to-clean silicone

Colour options: grey, red, white and yellow; end parts and cover plates: white



- 16211G/R/W/Y** length 450 mm
- 16222G/R/W/Y** length 550 mm
- 16255G/R/W/Y** length 700 mm
- 16266G/R/W/Y** length 800 mm
- 16299G/R/W/Y** length 700 + 700 mm
- 16399G/R/W/Y** length 450 + 1200 mm 90° + shower head holder

Other length options available.

Animo handrail

Modularly structured support aluminium handle, with a diameter of 32 mm.

- 1638 H/P/K** length 1000 mm, 1 shower head holder
- 1639 H/P/K** length 440 + 1200 mm 90°, 1 shower head holder
- 1637 H/P/K** length 440 + 1240 mm 90°, 2 shower head holders
- 1636 H/P/K** length 790 + 590 mm 90°
- 1629 H/P/K** length 700 + 700 mm 90°

Solo E rail

The unique E rail allows for a natural and firm grip from different directions and angles. Ergonomic, oval-shaped profile.

Material: antimicrobial painted aluminium

Colour options: grey, red, white

Dimensions: W 500 x D 235...155 mm



1677G/R/W Solo E rail

E rail

E rail has an elastomer surface which allows for a firm grip from all directions and angles.

1675 500 mm grey

1676 500 mm yellow

1679 500 mm red

SHOWER SEATS

Sense shower seat

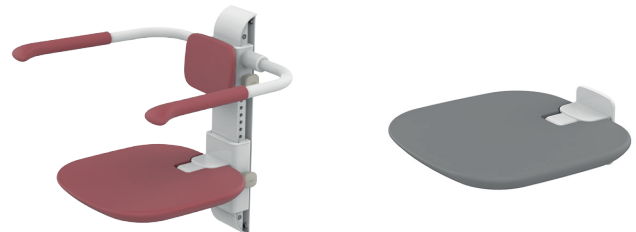
A modern, ergonomic folding shower seat, which allows for a stable yet comfortable sitting position. Tilted surface channels excess water away. Easy to fold up, set down and lock in upright position. User-specific, easy height adjustment with no tools. Height adjustment range 200 mm. Thanks to a single-rail height adjustment system, the seat is easy to clean and safe to fold down. Can be equipped with a combined arm/backrest. Load-bearing capacity at least 400 kg.

Material: antimicrobial integral plastic

Models: seat without hole, seat with hole

Dimensions: W 430 x H 613 x D 510 mm

Colour options: red, grey



17402G/R without hole

17405G/R with hole

17404G/R without hole, height-adjustable

17413G/R with hole, height-adjustable

17401G/R backrest and support rails

Gaius shower seat

The popular and timeless Gaius shower seat accommodates a wide range of environments and applications. Integrated support rails add to user safety. Load-bearing capacity is at least 250 kg. Height adjustment range 300 mm; 200 mm with support rails.

Material: White epoxy-painted steel or aluminium; grey non-slip integral plastic

Dimensions: W 454 x D 421 mm,

support rail length 600 mm



1737N shower seat, fixed wall-mounted

17372N shower seat, height-adjustable

20034 ESD protection for height-adjustable shower seat

6522 grey elastomer support rail pair

300 series shower seats

Provex 300 series designer shower seat is wall-mounted and foldable. The load-bearing capacity is 120 kg.
Dimensions: D 365 mm (in upright position 50 mm) x W 350 mm

- 3020 SD 05** PM black/chrome
3020 SD 31 PM white/white
3020 SD 69 PM white/chrome



Duo toilet seat

An electrically adjustable, sturdy but elegant toilet seat, which can bear up to 200 kg even in motion. Adjustment range 200 mm. The seat has integrated support rails coated with antimicrobial elastomer.

Dimensions: W 515 + 140 x H 1113-1313 x D 206,5 mm

Rail dimensions: 750 mm and 880 mm

Rail colour options: grey, red and yellow



- 17751** Gaius Duo electrically adjustable toilet seat raiser
320104G/R/Y Support rail pair 750 mm
320105G/R/Y Support rail pair 880 mm
8000 GB Hygienic Flush toilet seat 560 mm, incl. white lid with soft close feature
8001 GB Nautic toilet seat 560 mm
8003 VB Omnia Architectura toilet seat 710 mm

CABINETS

Gaius cabinets are designed to withstand active use and wet conditions. They feature an integrated handrail and a conveniently located mounting block for a socket outlet. The laundry basket inside is removable. Dispenser cabinets provide a variety of options for storage and dispensing paper towels and washing liquids.

Material: frame of white, moisture-resistant 16 mm melamine; white laminate doors with grey edge strips as standard. The door opening direction can be reversed.



High storage cabinets

- 6300W/R/G/Y** storage cabinet W 400 x H 1800 x D 500 mm, 2 fixed shelves, laundry basket, drawer, slide rails, socket housing (no socket included), support rail white, red, grey, yellow
6317 storage cabinet W 300 x H 1800 x D 500 mm. 2 x door. At the top, two fixed shelves and a socket housing with a hole and a sealing plug. At the bottom, one fixed shelf and a laundry basket with slide rails.

Cleaning cabinet

6305 HH cleaning cabinet W 300 x H 1800 x D 500 mm, laminate door, top shelf, one double hook and a vacuum cleaner hose hanger

Washing machine cabinet

63020 H washing machine cabinet, two parts: top part W 600 x H 1100 x D 500 mm, bottom part W 600 x H 700 x D 500 mm

Dispenser cabinets

6320 HH W 300 x H 900 x D 135 mm, two low doors, melamine frame, laminate door, grey edge strips, incl. 2 Dispenser pac racks and a paper towel holder

6312 HH W 300 x H 800 x D 115 mm, paper dispenser at the bottom, 2 top shelves, high laminate door, grey edge strips

6326 W 300 x H 900 x D 135 mm, paper dispenser at the top, bottom shelf, two laminate doors, grey edge strips

6327 W 300 x H 900 x D 135 mm, paper dispenser at the bottom, top shelf, high laminate door, grey edge strips

Equipment cabinets

6328 W 300 x H 900 x D 135 mm, top and bottom shelves, high laminate door, grey edge strips

6329 W 300 x H 900 x D 135 mm, top and bottom shelves, two laminate doors, grey edge strips

Basin cabinets

63013 W 500 x H 500 x D 500 mm, for fixed Public basin, dustbin, white frame, white laminate door and grey edge strips

63014 W 500 x H 500 x D 500 mm, for fixed Public basin, dustbin, white frame, steel colour laminate door and grey edge strips

63016 W 500 x H 500 x D 500 mm, for height-adjustable Plus basin, wire basket, white frame, grey edge strips, white laminate door

63017 W 500 x H 500 x D 500 mm, for fixed Plus basin, wire basket, white frame, grey edge strips, white laminate door

LIGHTS

Mirror cabinet lights

The mirror cabinet light fits all Korpinen mirror cabinets, corner mirror cabinets and corner mirrors. Placed at the top of the cabinet and secured with screws. Protection class IP44.

9570 with 11 W PL fluorescent lamp

9572 with 11 W PL fluorescent lamp and an electronic ballast

9202 Universal light, width 500 mm, 2 x 36 W, corner mirror/cabinet mounting, two electronic ballasts



LED wall and cabinet light

LED light, white aluminium, option for a MMJ-HF cable, colour temperature 4000 K, IP44, voltage 100...240 V. Power, luminosity and width vary, see product information for details. Mounting on the wall or above cabinet. Service life 50,000 hours.

9577 width 400 mm, 8 W, 670 lm

9578 width 500 mm, 12 W, 900 lm

9579 width 600 mm, 15 W, 1200 lm

9580 width 900 mm, 20 W, 1760 lm



Gaius mirror lights

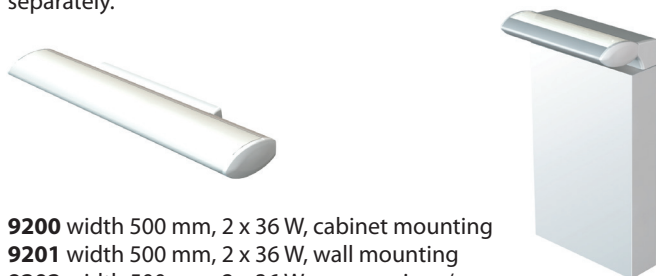
6110 width 600 mm, 1 x 24 W, mirror light

6111 width 600 mm, 2 x 24 W, mirror and ambient light

6112 width 900 mm, 1 x 39 W, mirror light

Universal lights

Effective lighting for a variety of spaces. Two ballasts allow separate switches for the top light and the bottom light. The mirror light and the ambient light can thus be used either together or separately.



9200 width 500 mm, 2 x 36 W, cabinet mounting

9201 width 500 mm, 2 x 36 W, wall mounting

9202 width 500 mm, 2 x 36 W, corner mirror/cabinet mounting

9206 width 600 mm, 2 x 55 W, cabinet mounting

9207 width 600 mm, 2 x 55 W, wall mounting

9210 width 900 mm, 4 x 21 W, wall mounting

MIRRORS

Gaius mirrors

6101 Gaius 600 x 900 mm, aluminium strips

6102 Gaius 900 x 1000 mm, aluminium strips

6107 Gaius 600 x 1000 mm, aluminium strips

9561W tilted 530 x 695 mm

9562W tilted 630 x 695 mm

9563W tilted 530 x 790 mm

6530 corner mirror 500 x 1000 mm with mounting hardware

MIRROR CABINETS

Cabinets are available with either a straight or a tilted lockable mirror door fitted with robust hinges. If necessary, the lock can be replaced with a magnet. The cabinets open to the right (hinge on the right). Left-handed doors are available upon request. Mirror cabinets are moisture-resistant.

Material: electro-galvanised steel sheet with antibacterial epoxy paint.

Mirror cabinets 500 mm



9511W W 500 x H 700 x D 135 mm, straight mirror door, without base 1 shelf, high paper towel holder

9514W W 500 x H 700, tilted mirror door, without base 1 shelf, high paper towel holder

9523W W 500 x H 800, tilted mirror door, without base 1 shelf, high paper towel holder

9524W W 500 x H 700 x D 135 mm, straight mirror door, fixed base with dispensers, 1 shelf, high paper towel holder

9525W W 500 x H 700 mm, tilted mirror door, fixed base with dispensers, 1 shelf, high paper towel holder



Base options for 500 mm mirror cabinets:

9536-103W 500 mm, with 2 elbow-operated Dispenso pac dispenser arms

9536-101W 500 mm, with 2 dispenser openings

9537-010W 500 mm cabinet base for private bathrooms

Mirror cabinets 600 mm

9517W W 600 x H 700 mm, straight mirror door, without base 1 shelf, high paper towel holder

9520W W 600 x H 700 mm, tilted mirror door, without base 1 shelf

Base options for 600 mm mirror cabinets:

9538-104W 600 mm, with 2 elbow-operated Dispenso pac dispenser arms and one dispenser opening

9538-105W 600 mm, with 1 elbow-operated Dispenso pac dispenser arm and 1 cup holder

9538-101W 600 mm, with 3 dispenser openings

9538-010W 600 mm, with 2 elbow-operated Dispenso pac dispenser arms and 1 fixed cup holder

9539-010W 600 mm cabinet base for private bathrooms



Mirror cabinet accessories:

9582 Dispenso pac dispenser frame, elbow-operated

9583 Dispenso pac dispenser frame, palm-operated

9585W beaker dispenser

9545-012 Dispenso pac dispenser arm

Safety film mirror safety film

9590 corner mounting support for 500 mm mirror cabinet

Corner mirror cabinet 400 x 900 mm, fixed base plate

6532 W 400 x H 900 mm, moisture-resistant melamine

6533 W 400 x H 900 mm, moisture-resistant laminate

6534 W 500 x H 900 mm, moisture-resistant laminate

6537 W 500 x H 900 mm, moisture-resistant melamine

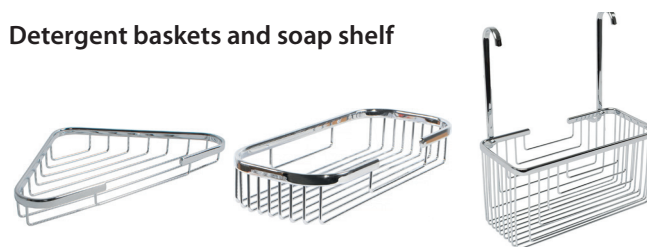


Senior mirror cabinet

9531 W 600 x H 800 mm, white

ACCESSORIES

Detergent baskets and soap shelf



1311 soap shelf, RST-line, W 180 x H 20 x D 110 mm

1913 soap basket, polished stainless steel, W 148 x H 30 x D 110 mm

1921 detergent basket, chrome-plated, W 290 x H 130 x D 50 mm

1922 detergent basket, chrome-plated, W 200 x H 110 x D 40 mm

6077.0 detergent basket, chrome-plated, W 200 x H 90 x D 110 mm

6085 detergent basket, chrome-plated, W 290 x H 130 x D 92 mm

1928 detergent basket for support rail, chrome-plated,

W 295 x H 150 x D 130, handle 200 mm

6035.0 detergent basket, chrome-plated, W 320 x H 250 x D 40 mm, for corners

6079.0 detergent basket, chrome-plated, W 320 x H 250 x D 90 mm, for corners

6064.0 detergent basket, chrome-plated, W 220 x H 170 x D 90 mm, for corners

Towel and clothes



- 1901** 1 hook, for towels, aluminium / white
- 1902** 2 hooks, for towels, aluminium / white
- 1903** 4 hooks, for towels, aluminium / white
- 1904** 5 hooks, for towels, aluminium / white
- 1915** 1 hook, for towels, aluminium / silver
- 1916** 2 hooks, for towels, aluminium / silver
- 1917** 4 hooks, for towels, aluminium / silver
- 1918** 5 hooks, for towels, aluminium / silver
- 1907** double hook, for clothes, steel / white
- 1907N** double hook, for clothes, aluminium / white (also for indoor swimming pools)
- 1908** double hook, for clothes, steel / chrome-plated
- 1919** double hook, for clothes, matt chrome-plated
- 1925** double hook, large double hook H 180 x W 105 x D 75 mm
- 1926** coat rack, white, H 130 x W 125 x D 65 mm
- 1927** coat rack, silver, H 130 x W 125 x D 65 mm
- 15880** double hook, for clothes, aluminium / red 3 pcs
- 15885** double hook, for clothes, aluminium / yellow 3 pcs

Glove box holder

- 9599** Glove box holder, 3 slots, stainless steel
- Holder size W 260 x H 455 x D 87 mm



Liquid soap dispensers for disposable packages

- 1226** Dispenco pac wall rack, elbow-operated
- 1227** Dispenco pac wall rack, palm-operated
- 1157** Dispenser frame Savonpak 1200 INOX, for liquid soap packages 2311
- 1241L** left Dispenco pac wall rack, stainless steel housing, elbow-operated, filled from the side, lacquered
- 1243W** left Dispenco pac wall rack, white stainless steel housing, elbow-operated, filled from the side
- 1156** Savonpak, plastic, for disposable packages, 0.8 l
- 1251** drip-tray for Dispenco dispenser

Liquid soap dispensers



- 1134L** PV-110 R stainless steel, lacquered, 0,8 l
- 1135W** PV-110 V stainless steel / white, 0,8 l
- 1300L** RST-Line stainless steel, 0,8 l, lacquered
- 1187N** QTS Intro white plastic, lockable, 1 l
- 6984.P** Roky transparent blue, plastic, 0.6 l

Dustbins

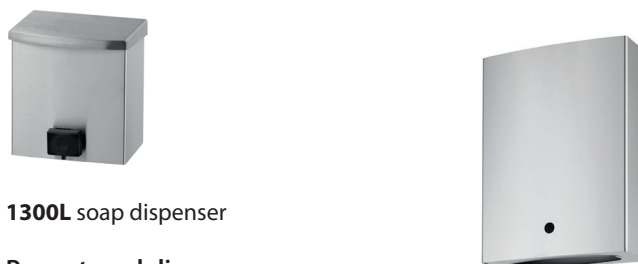


- 1340W** 15 l, with lid, metal, painted white, W 280 x H 330 mm
- 1341W** 15 l, without lid, metal, painted white, W 280 x H 330 mm
- 1871** steel wire basket, coated with epoxy plastic, for ca. 20 l bag
- 1872** lid, white HD polyethene
- 1882N** wire basket for 30 l bag, stainless steel, without lid
- 1882-1** lid, for stainless steel wire basket
- 1873** semicircular 10 l, stainless steel, with lid, W 267 x H 315 mm
- 1874W** semicircular 10 l, white steel, without lid, W 267 x H 315 mm
- 1875W** semicircular 10 l, white steel, with lid, W 267 x H 315 mm
- 1880W** semicircular 20 l, white steel, without lid, W 342 x H 370 mm
- 1881W** semicircular 20 l, white steel, with lid, W 342 x H 370 mm

RST-LINE ACCESSORIES

RST is an elegant, cohesive and durable accessories line for public washrooms and toilets. The products are lacquered or painted white, and the edges smoothed to perfection. Lacquer finish allows for easy cleaning and shows no fingerprints. Material: brushed stainless steel, lacquer or paint finish.

Soap dispenser



1300L soap dispenser

Paper towel dispensers

- 1304L** RST-line, lockable, lacquered, W 270 x H 350 mm
- 1304W** RST-line, lockable, white W 270 x H 350 mm
- 1305L** RST-line, without lock, lacquered, W 270 x H 350 mm
- 1305W** RST-line, without lock, white, W 270 x H 350 mm

Toilet paper dispensers



- 1301L** RST-line 2 rolls, lockable, lacquered, W 135 x H 290 mm
- 1302L** RST-line 3 rolls, lockable, lacquered, W 135 x H 400 mm
- 1302V** RST-line 3 rolls, lockable, white, W 135 x H 400 mm
- 1303L** RST-line 3 rolls, without lock, lacquered, W 135 x H 400 mm
- 1312L** RST-line Jumbo max 330 mm diam, lacquered, W 350 x H 340 mm

Toilet brush holders

- 1309** RST-Line, wall-mounted, brush not included, for different brush types, lacquered
- 1309W** RST-line, wall-mounted, brush not included, for different brush types, painted white
- 13090** RST-Line, holder with a removable cup. Total height 454 mm. Brush not included



Dustbins



1321L RST-Line 25 L, stainless steel, with lid, for 30 l bag, lacquered, W 335 x H 420 mm

1321W RST-Line 25 L, stainless steel, with lid, for 30 l bag, white, W 335 x H 420 mm

1320L RST-Line 25 L, stainless steel, without lid, for 30 l bag, lacquered, W 335 x H 420 mm

1320W RST-Line 25 L, stainless steel, without lid, for 30 l bag, white, W 335 x H 420 mm

1318L RST-Line 15 l, without lid, stainless steel, lacquered, W 280 x H 330 mm

1319L RST-Line 15 l, with lid, stainless steel, lacquered, W 280 x H 330 mm

Coat hanger and soap shelf

1310 coat hanger

1311 soap shelf

Toolflex holders for fixtures and walls



1507 610-2, rod diameter 20...30 mm red

1508 610-7, rod diameter 20...30 mm yellow

1509 510-3, rod diameter 20...30 mm white

1510 510-1, rod diameter 20...30 mm black

1520 520-1, rod diameter 30...40 mm black

1555 555-1, aluminium rail width 500 mm, 3 holders

1556 556-1, aluminium rail width 900 mm, 5 holders

BABY CHANGING STATION AND CHILD SEAT

Wall-mounted baby changing station that is safe and sturdy. It is fitted with a harness and can hold up to 15 kg of weight. The platform curves slightly downward for added safety. Thanks to a damping mechanism, the station folds up and down softly. Material: polyethylene plastic.



KB200-01 baby changing station, wall-mounted, grey,

W 890 x H 550 x D 520 mm (folded down), max weight 15 kg

KB200-01SS baby changing station, wall-mounted, grey, stainless steel front panel

KB101-01-INB baby changing station, wall-mounted, grey, vertical

KB 102-01-INB child seat, wall-mounted, grey,

W 476 x H 311 x D 317 mm (folded down), max weight 20 kg

GAIUS SLIDING DOOR



Gaius sliding door is delivered with a special wall element fitted for Gaius bathrooms. It provides a fully accessible and safe solution for new and renovated facilities in service flats, public buildings and hospitals.

The door has no sill. A sturdy handrail adds to user safety. Gaius door is more durable than the surface mounted sliding door systems. If necessary, it can be equipped with a motion detector and a remote control. Dimensionally accurate, supported CE marked structure. Sliding door options: 910/1010/1210 mm, single-leaf or double door, 40 mm laminate door as standard. Other door options as per requirements, including full laminate or antibacterial coating.

The wall element is delivered ready-to-install for easy and quick assembly. It can be attached to different wall materials. The Gaius sliding door solution includes: ready-to-install 95 mm partition wall element (with top and bottom guides), a sliding door, moisture-resistant frame package, screws for the element and the frames, openings for necessary electrical installations, installation and operating instructions.

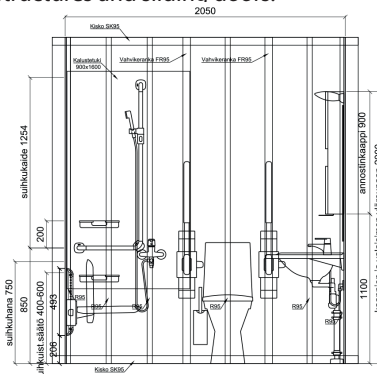
99501 Gaius sliding door solution

GAIUS WALL ELEMENT

Gaius wall elements allow for easy, quick installation. The dimensions of the structures match those of the Gaius bathrooms and furniture. Fixtures, support rails and seats are thus easy to install in correct places. Light and dimensionally accurate components are fully compatible with each other.

The prefabricated wall components do not generate any waste. If necessary, all components can be removed and recycled after the building's life cycle is completed.

Customised and accurately dimensioned Gaius wall elements are delivered as ready-to-install components. Elements are mounted to the floor or the ceiling. Sheet metal connections are made with screws or fastening pliers. In wetrooms the sheets are mounted directly on the frame. Modelled structures, PDF dimensional drawings, CAD images and DWG and GDL objects facilitate the designing of wall structures and sliding doors.



99500 Gaius wall elements

SALES AND INFO

Väinö Korpinen Oy

Kalkkipellontie 6

FI-02650 ESPOO

Tel. +358 9 5491 4400

korpinen@korpinen.com

www.korpinen.com

KORPINEN