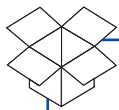
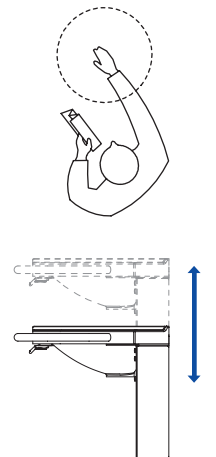
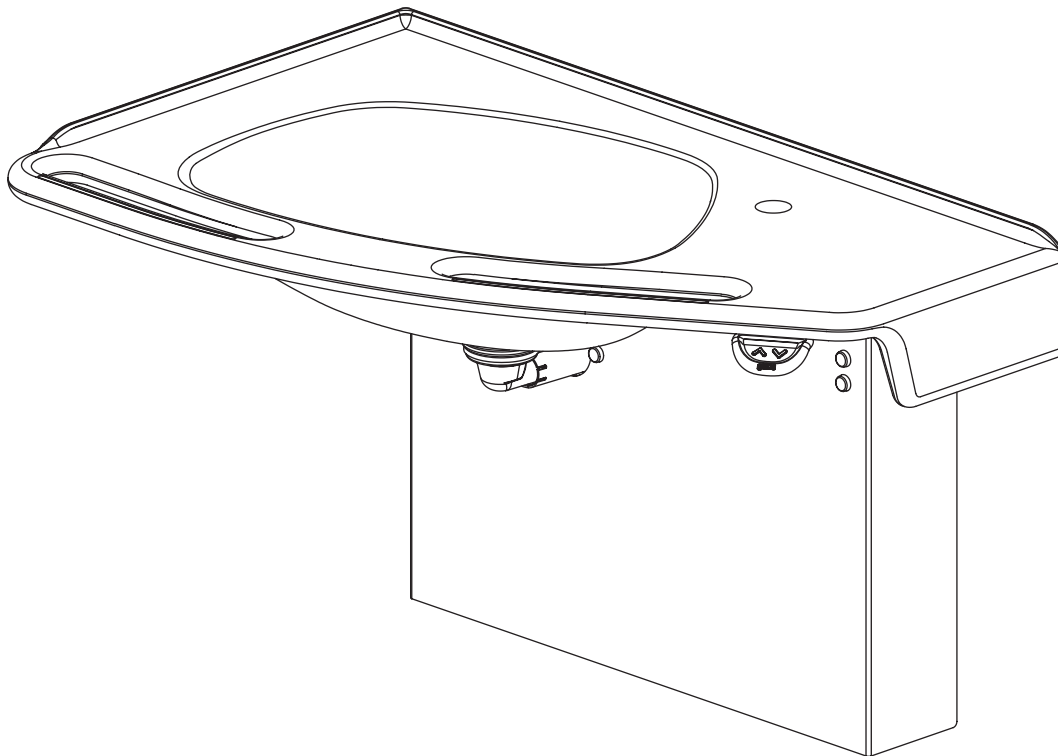


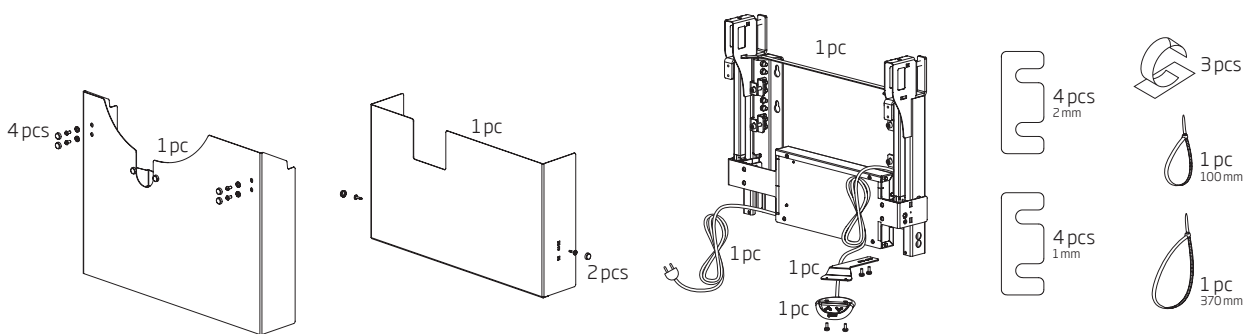
Sense electrical basin

65133.4R

INSTALLATION INSTRUCTIONS



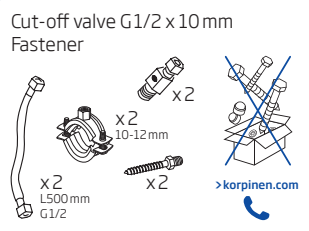
(Basin not included)



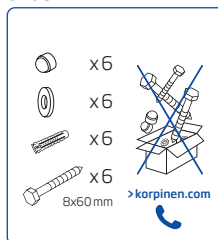
Tap



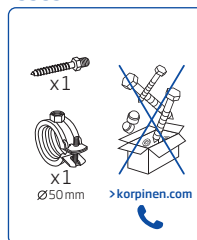
13970



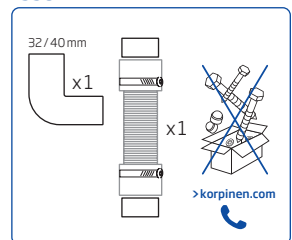
6208-Z



13983

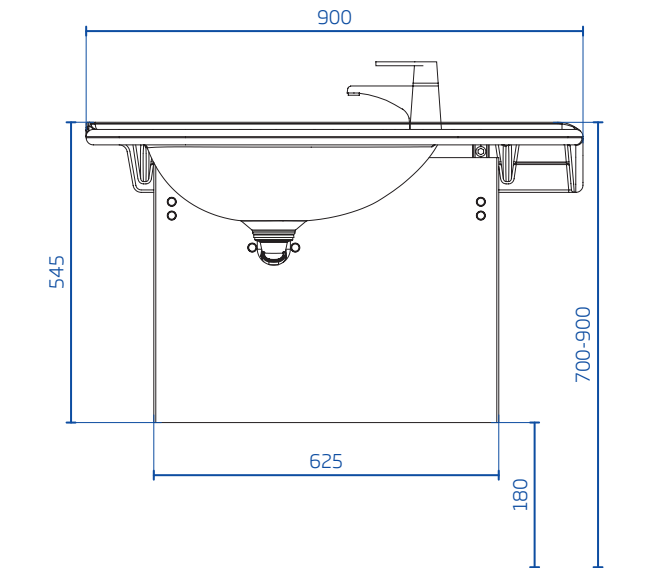


13982

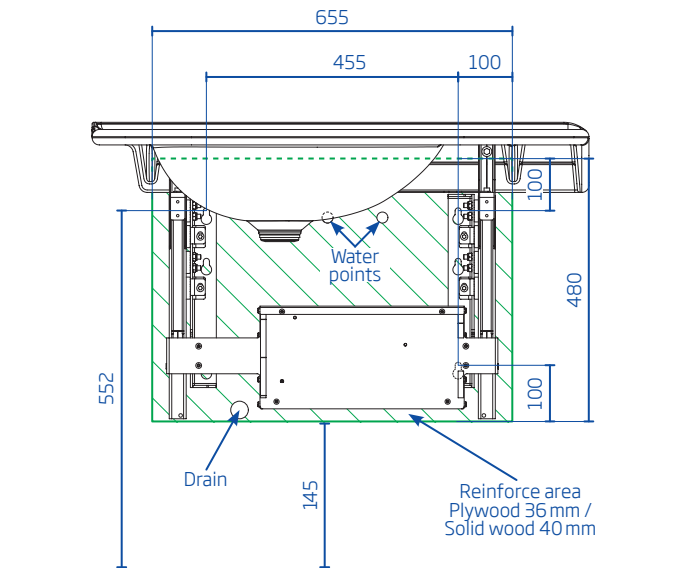


The installer must be a professional.

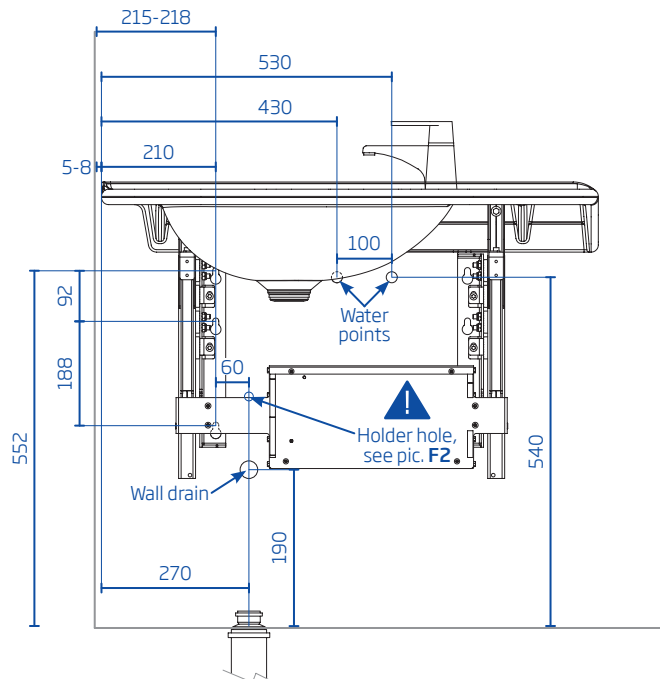
Outfit



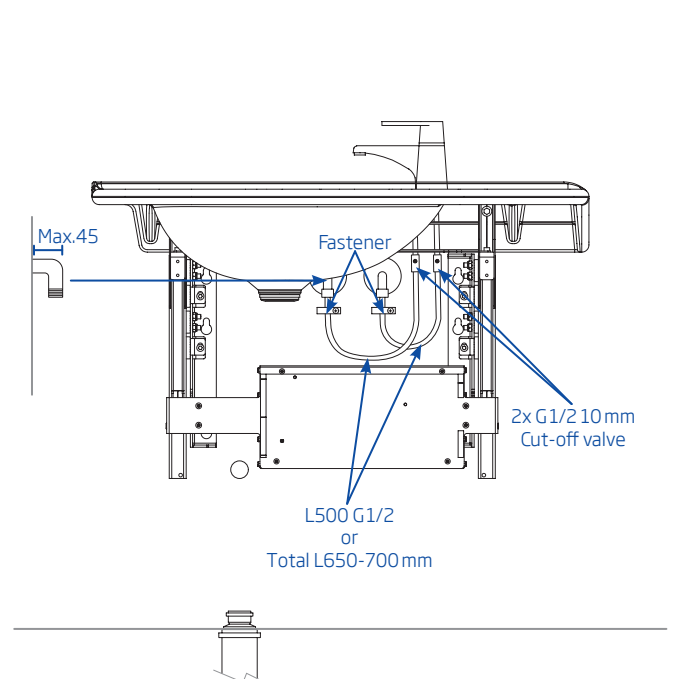
Reinforce area



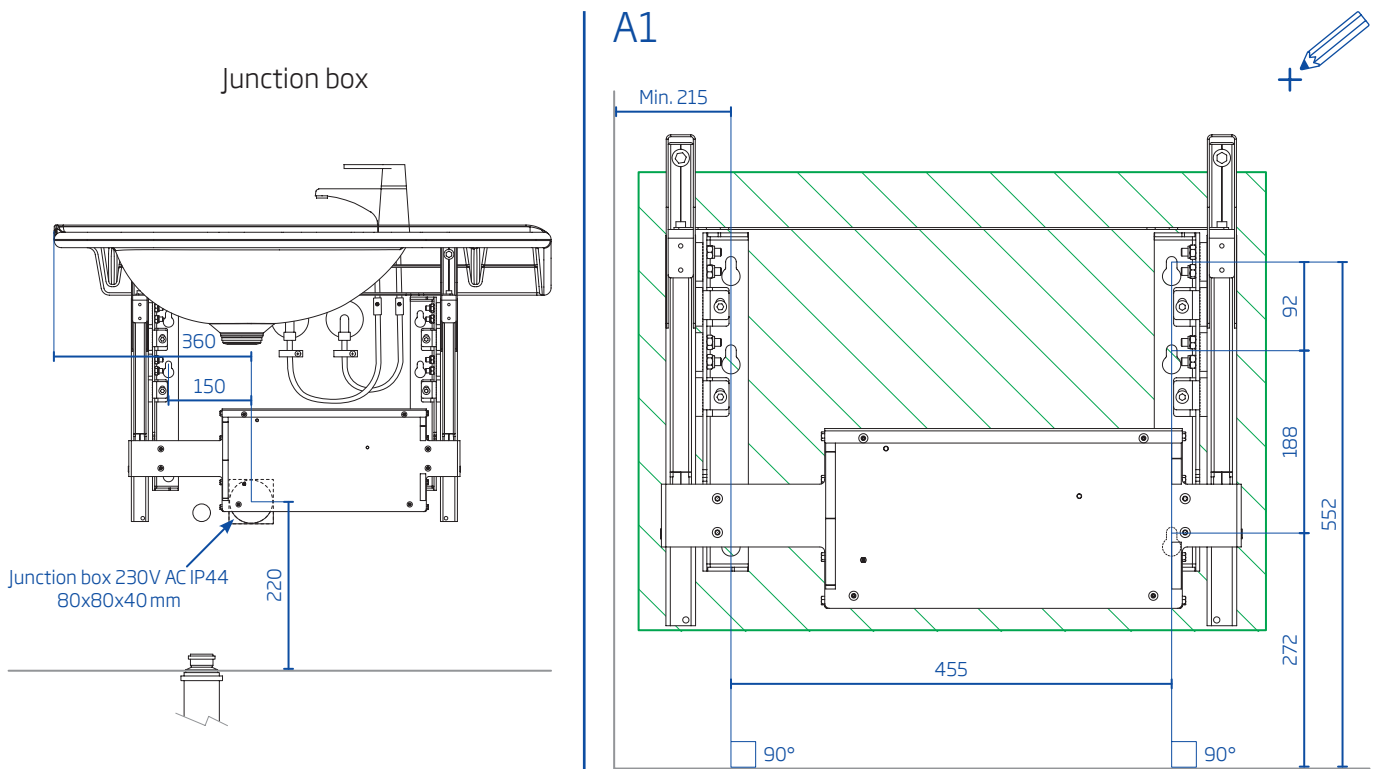
Water and drain places,
frame installation measures



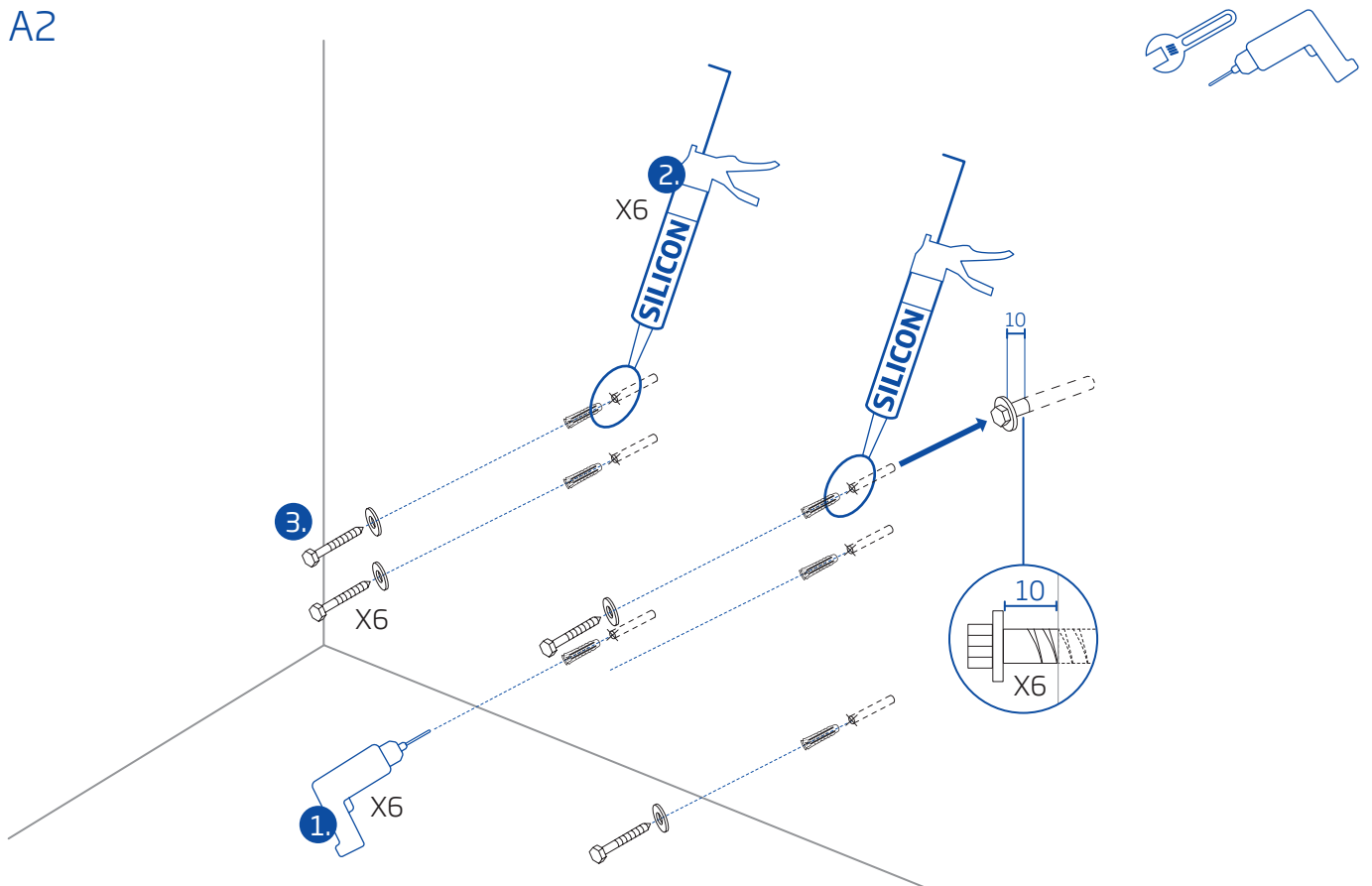
Water and drain pipes



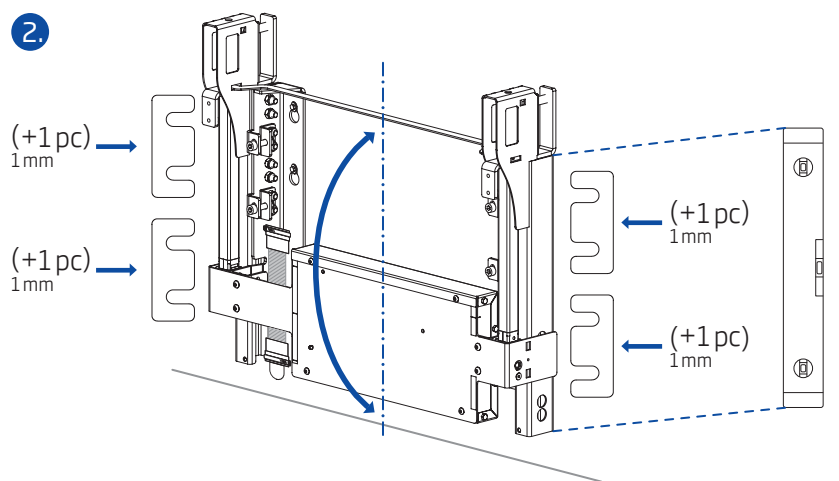
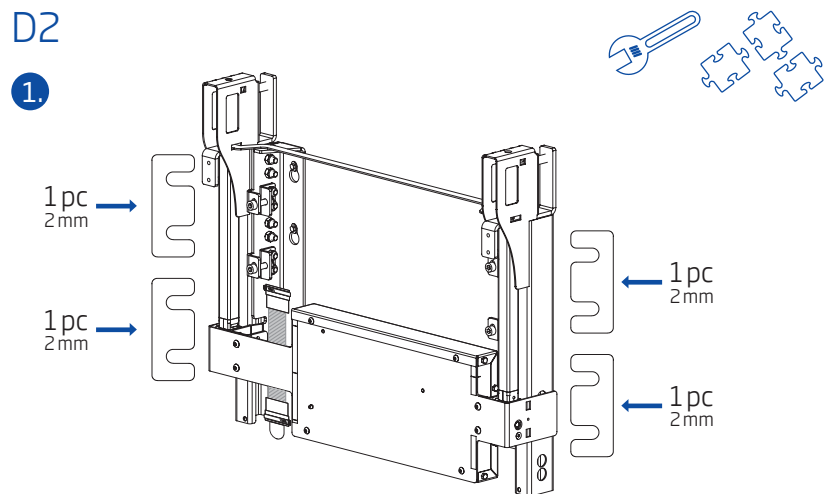
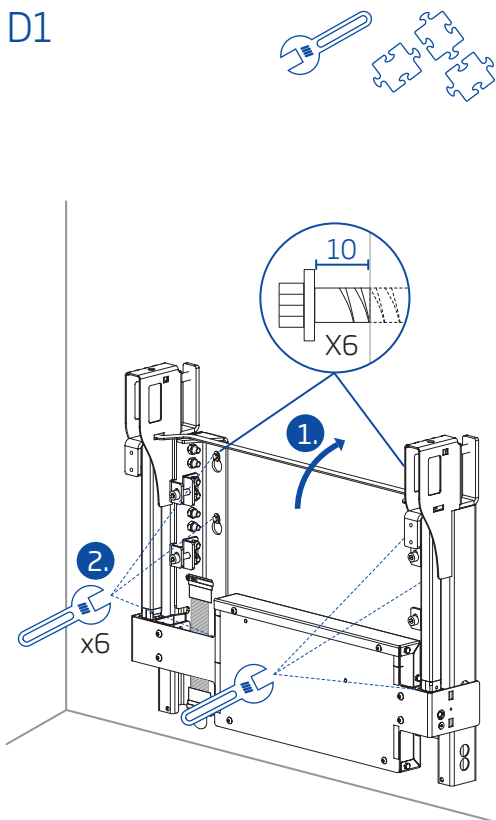
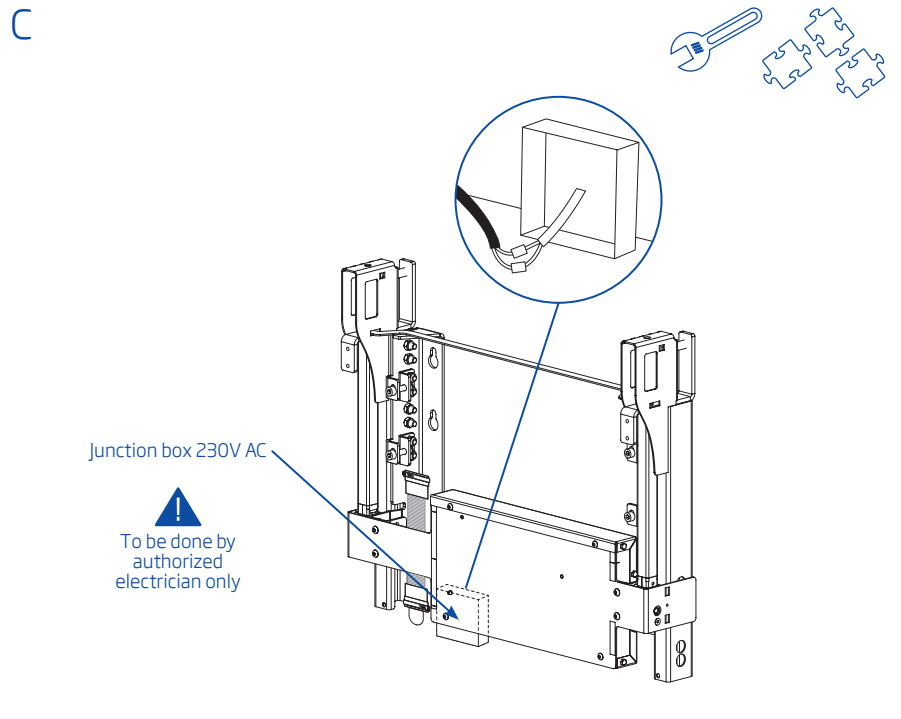
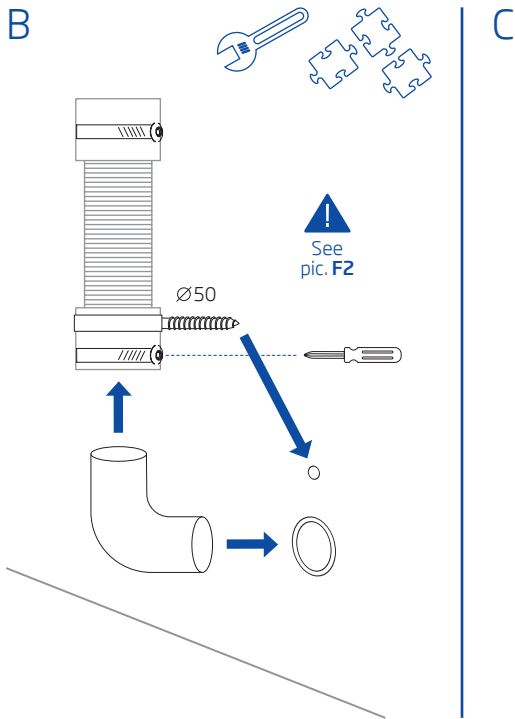
The installer must be a professional.



A2

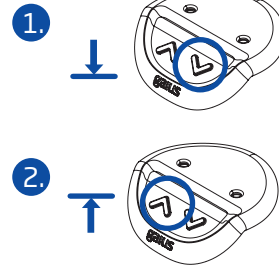
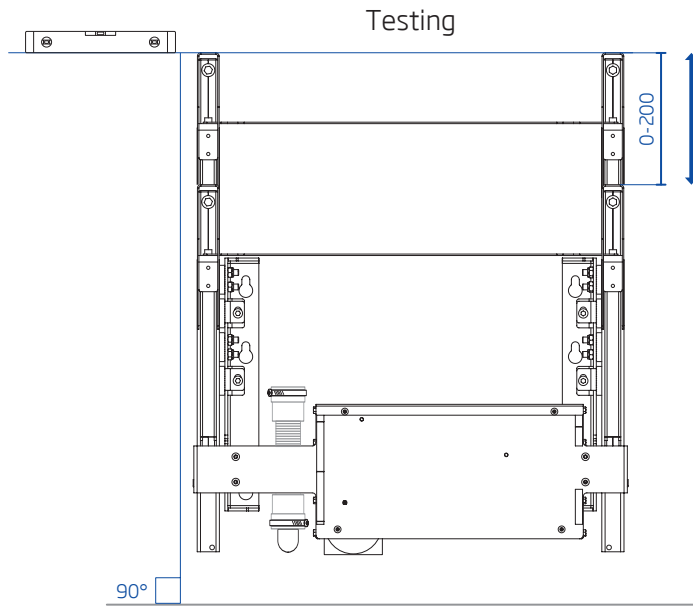





The installer must be a professional.



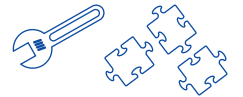
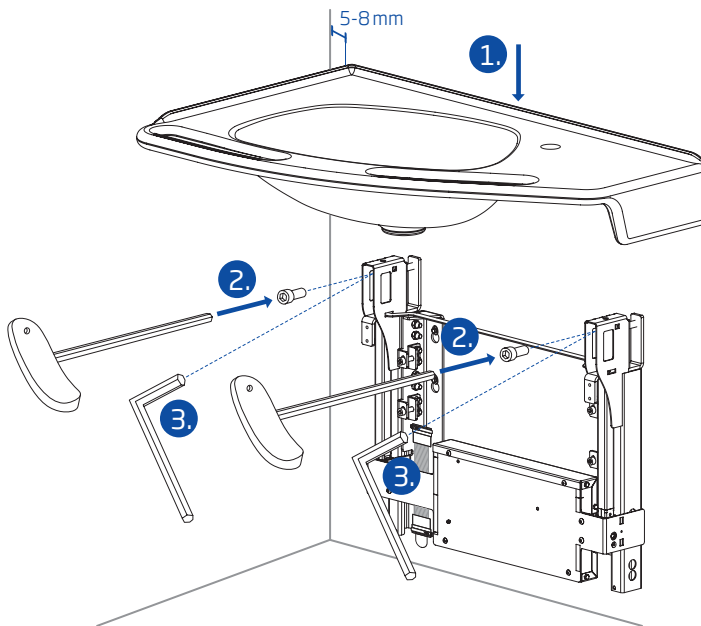
The installer must be a professional.

D3

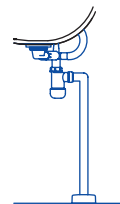
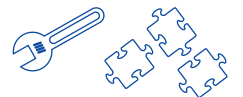
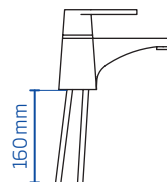
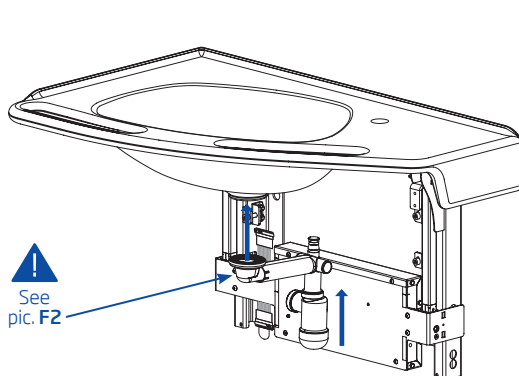


-  Continue to step E
-  Check steps A1-D2 or >korpinen.com 

E



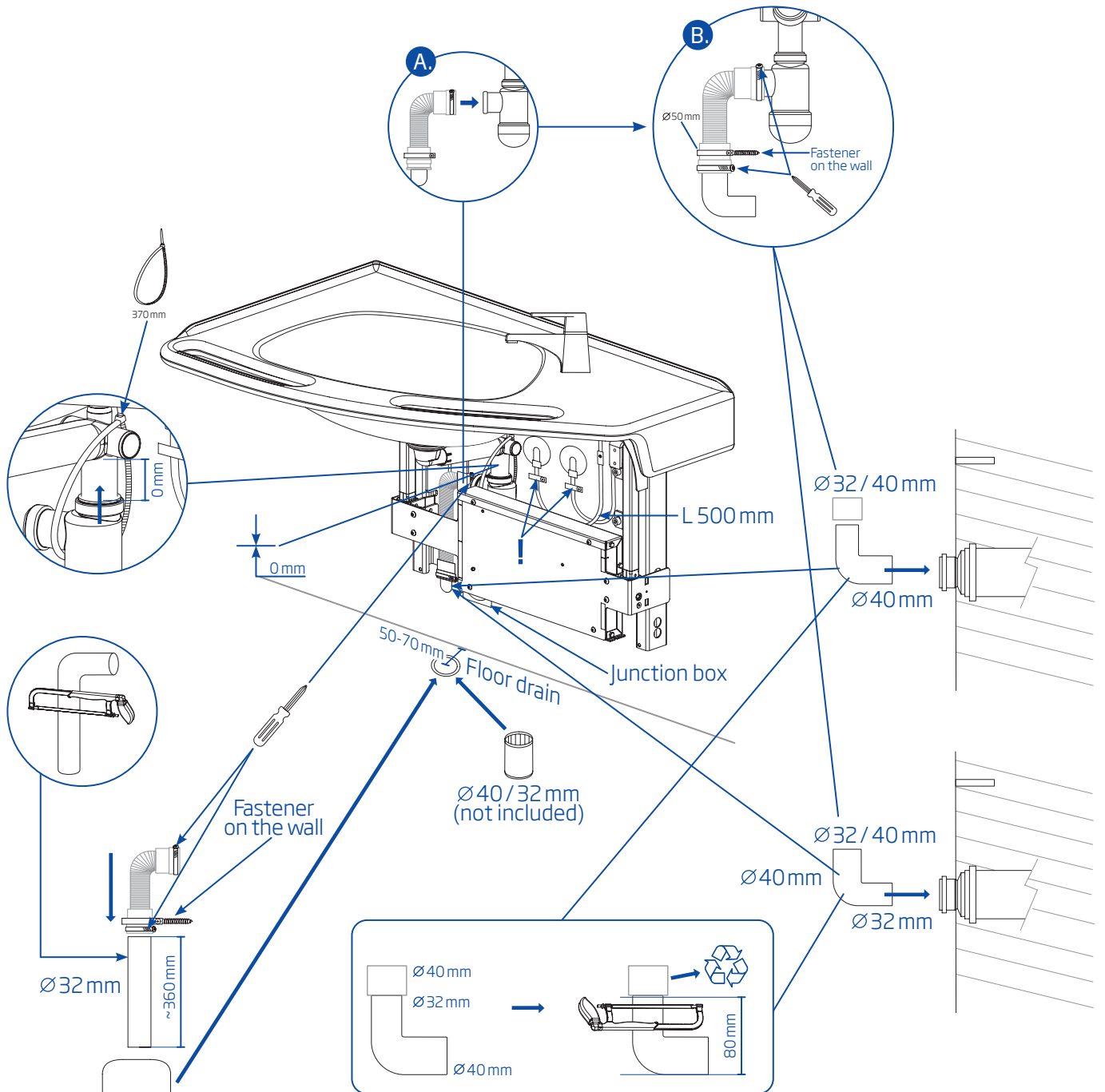
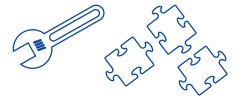
F1



>korpinen.com
https://www.korpinen.com/uploads/documents/Galus_water_trap-2018.pdf

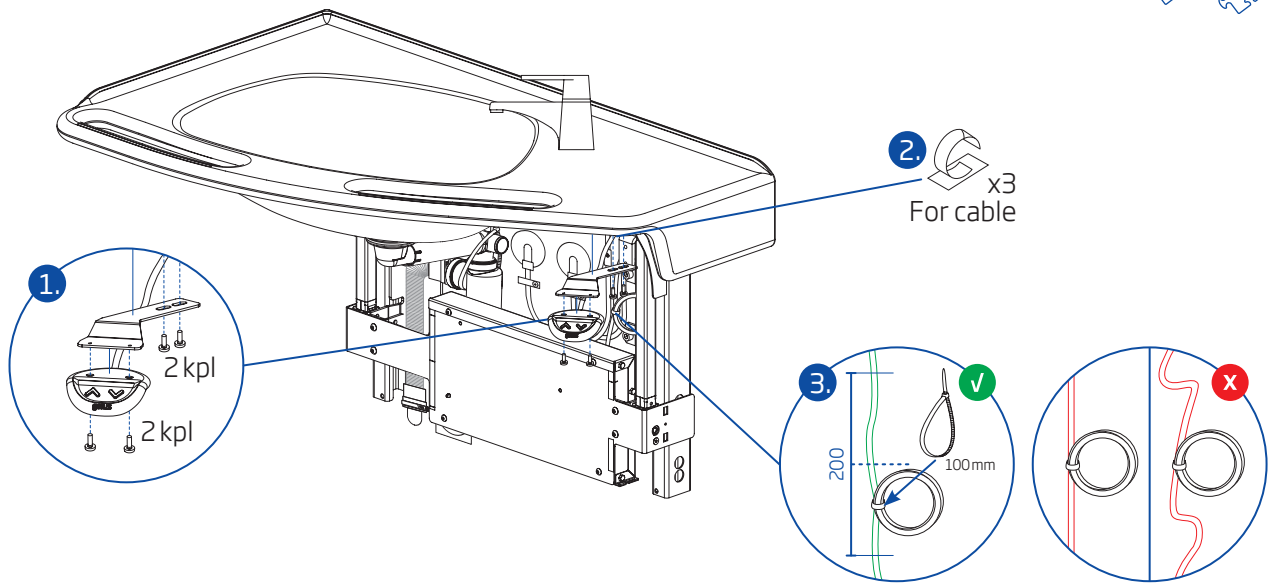
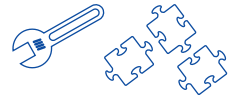
The installer must be a professional.

F2

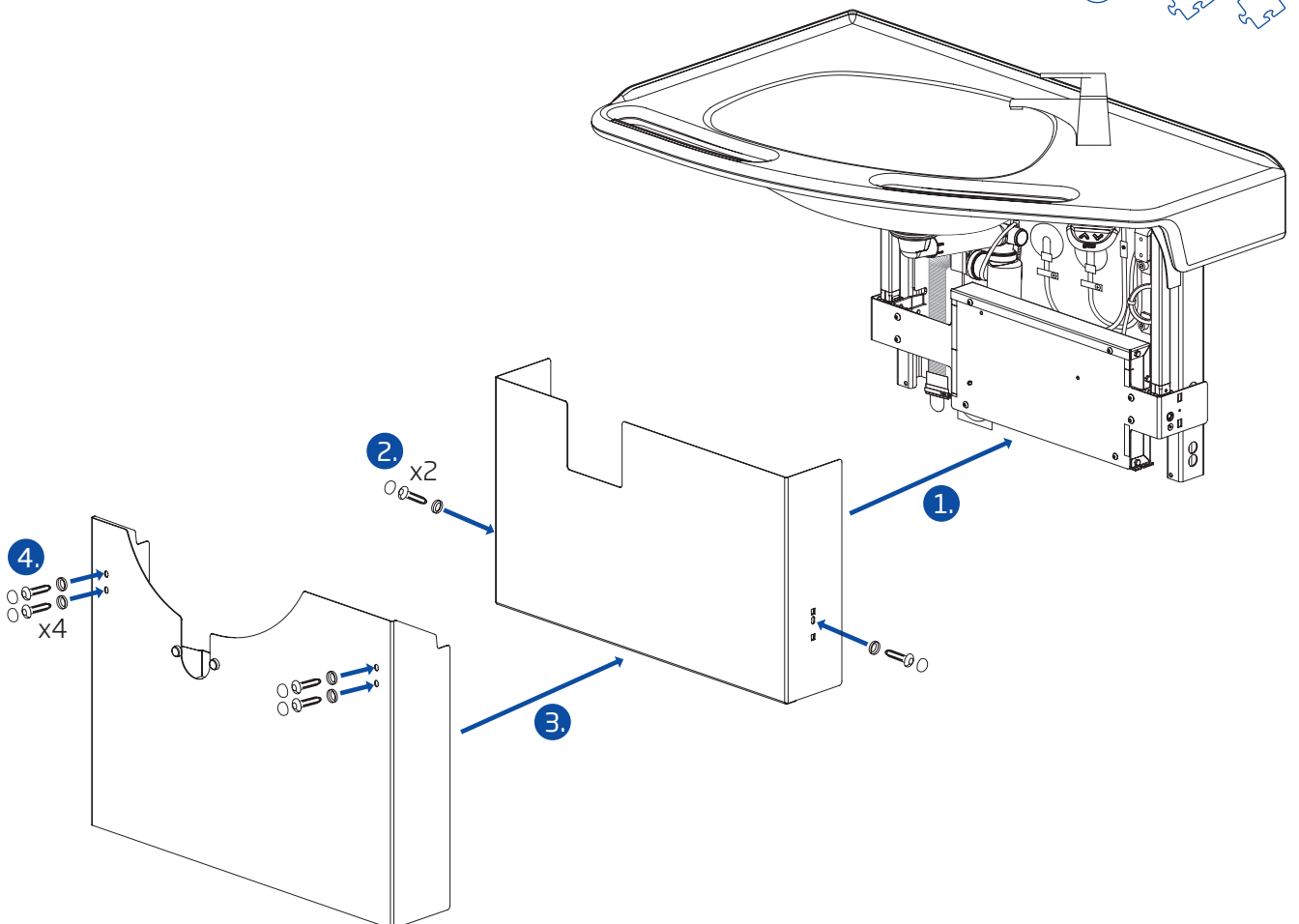
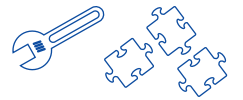


The installer must be a professional.

G1

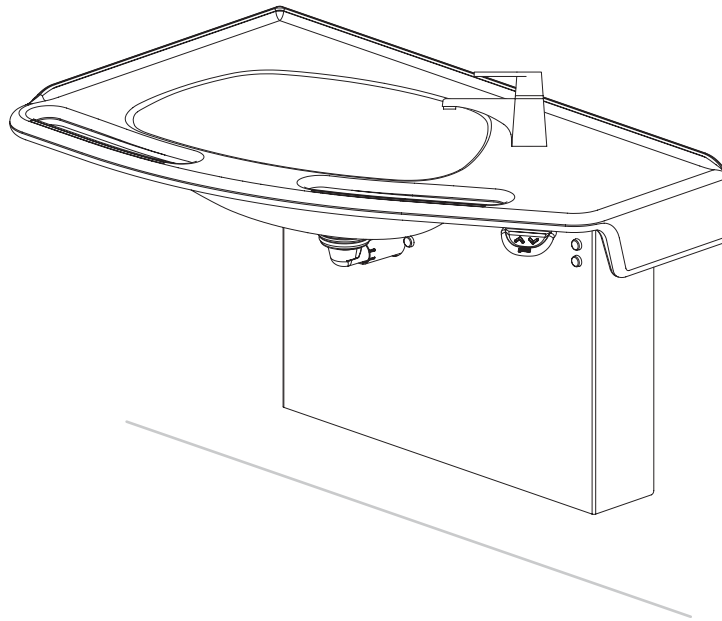


G2



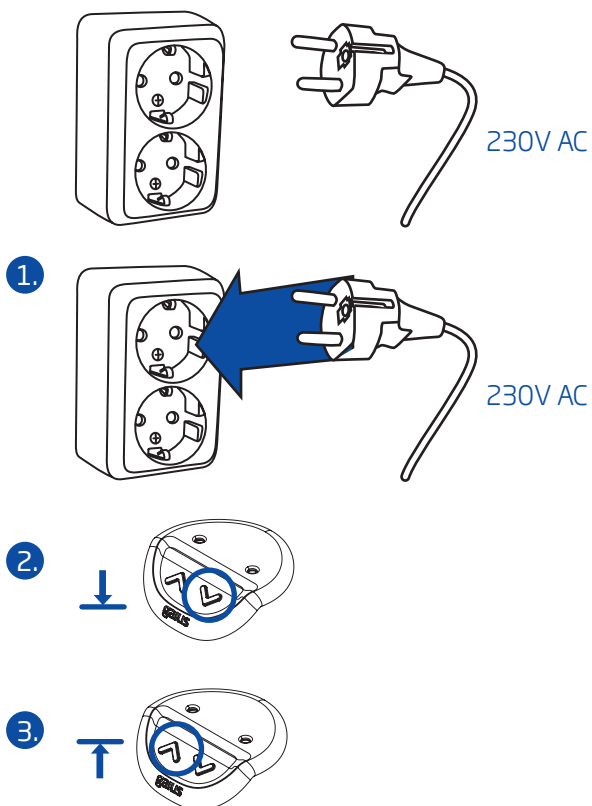
The installer must be a professional.

H



Trouble shooting / Ongelmatilanteita

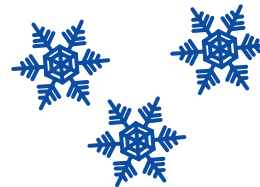
Power cut / Sähkökatko



Motor drive / Moottorin ajoaika



1 min
Drive
Ajoaika



5 min
Cooling
Jäähdytys

?
>korpinen.com


korpinen@korpinen.com

The installer must be a professional.