

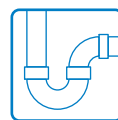
# Gaius bathroom

## Content

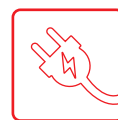
### INTERFACE/INSTALLATION INSTRUCTIONS



Construction



Plumbing



Electrical

Gaius Modular shower supports  
16399/16400 & 16388

Page  
2



Gaius Solo shower supports  
16805/16806 & 16804

3



Gaius Sense height  
adjustable shower seats  
17412 & 17413

4



Gaius height adjustable  
shower seat  
17372GAM

5



Gaius Regal height  
adjustable support rail  
20106

6



Gaius cabinets &  
equipment cabinet  
6300, 6309, 6313, 6314 & 6320

7



Gaius DUO  
17782 & 17783

8



Gaius Original fixed basins  
6202 & 6203

9



Gaius Original height  
adjustable basins  
6202+6230 & 6203+6230

10



Gaius Original right side  
height adjustable basins  
6202+21273106 & 6202+21273107

11

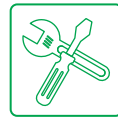
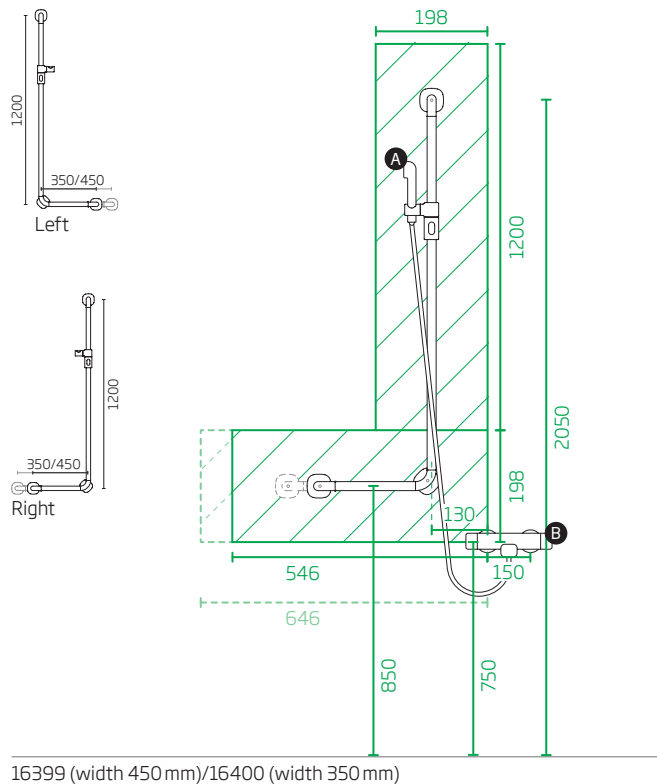


Gaius Original left side  
height adjustable basins  
6203+21273108 & 6203+21273109

12



Reinforcements of background structures must be made by professionals  
in accordance with good construction practice and local regulations.



CONSTRUCTION:

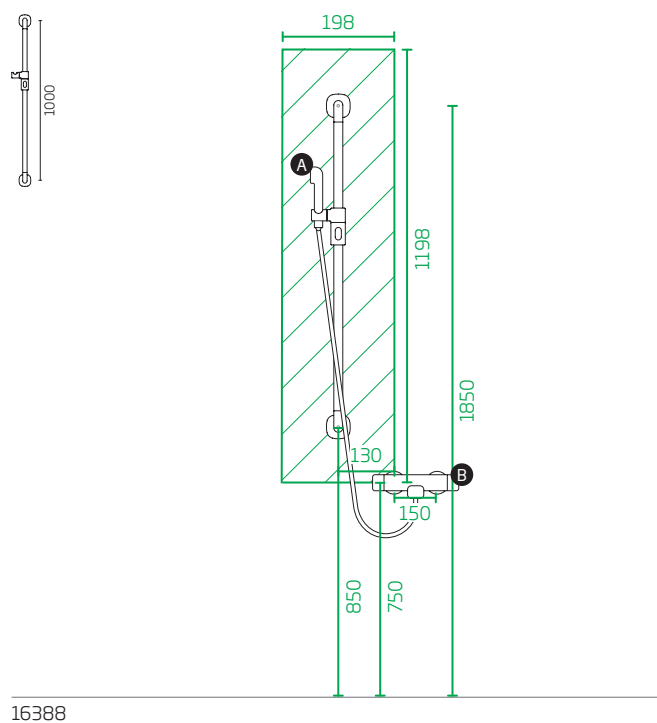
Construction reinforcements (2"x8" C24 or better quality) or birch plywood 21mm from the floor to the roof.

Load-bearing capacity for both products is 225 kg.

A. Oras Apollo 2520 + 241014, 1500 mm / prod.nr

B. Oras Optima 7160 / prod.nr 850015

**NOTE!** Before installation, see product's installation instructions.



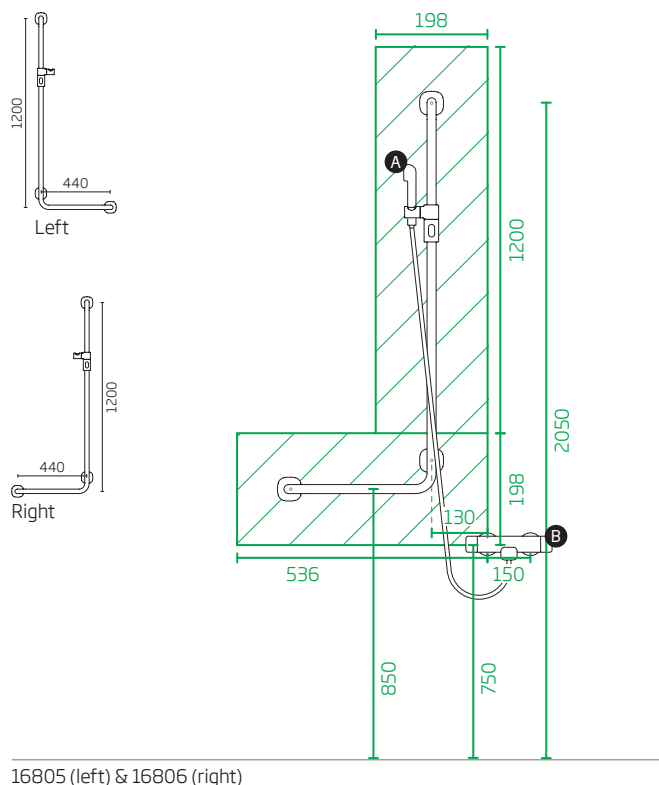
Reinforcements of background structures must be made by professionals in accordance with good construction practice and local regulations.

# Gaius Solo

## shower supports

### 16805/16806 & 16804

## INTERFACE/INSTALLATION INSTRUCTIONS



### CONSTRUCTION:

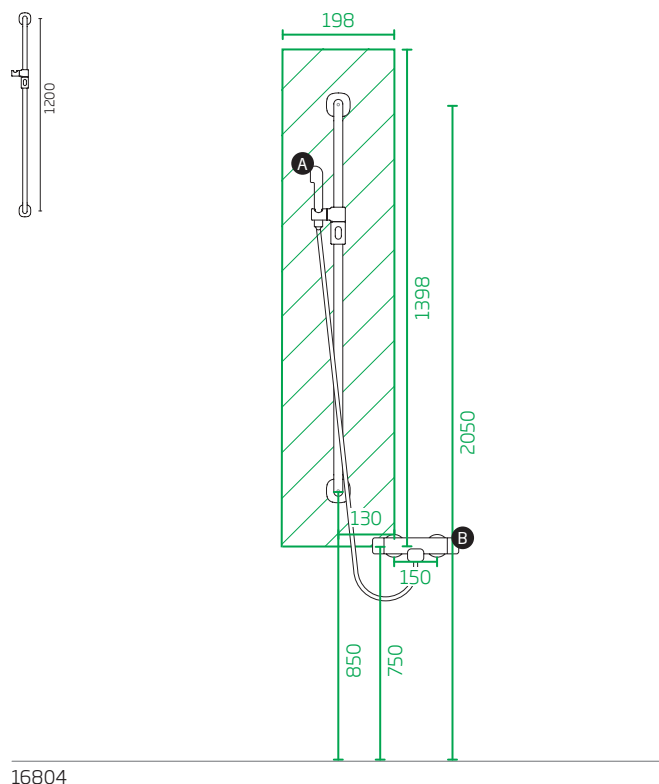
Construction reinforcements (2"x8" C24 or better quality) or birch plywood 21mm from the floor to the roof.

Load-bearing capacity for both products is 225 kg.

A. Oras Apollo 2520 + 241014, 1500 mm / prod.nr

B. Oras Optima 7160 / prod.nr 850015

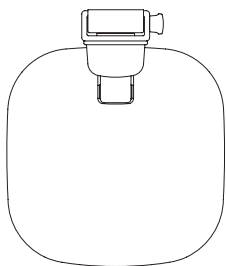
**NOTE!** Before installation, see product's installation instructions.



Reinforcements of background structures must be made by professionals in accordance with good construction practice and local regulations.

# Gaius Sense height adjustable shower seats 17412 & 17413

## INTERFACE/INSTALLATION INSTRUCTIONS

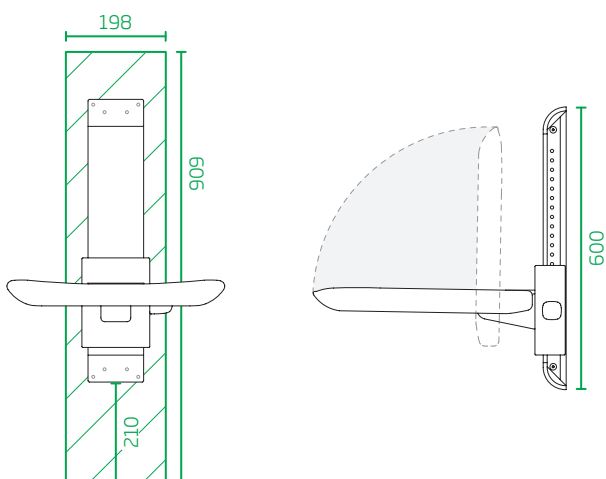


### CONSTRUCTION:

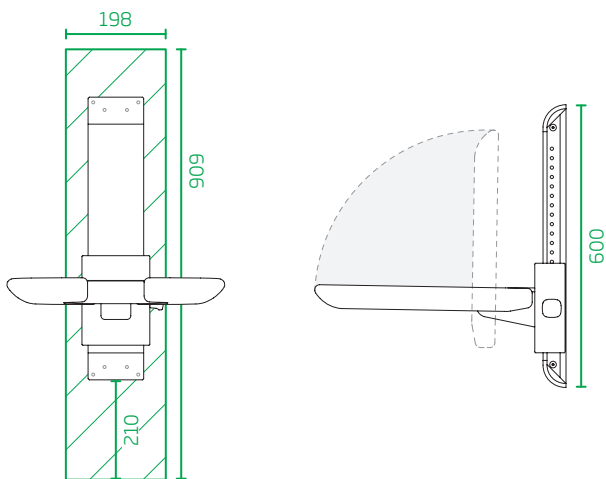
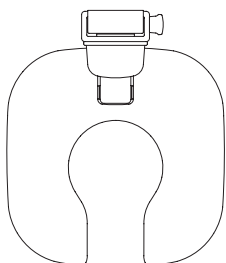
Construction reinforcements (2"x8" C24 or better quality) or birch plywood 21mm from the floor to the roof.

Load-bearing capacity for both products is 225 kg. For the Sense shower seat to the short term nominal load, 500kg, the fastener connected to e.g. 2"x8" (C24 or better quality) timber member has to be 8 x DIN 571 8x70. When the total thickness of tiles and drywall is not more than 25 mm.

**NOTE!** Before installation, see product's installation instructions.



17412

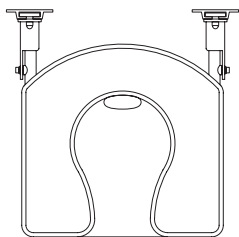


17413 (Open seat)

Reinforcements of background structures must be made by professionals in accordance with good construction practice and local regulations.

# Gaius height adjustable shower seat 17372GAM

## INTERFACE/INSTALLATION INSTRUCTIONS

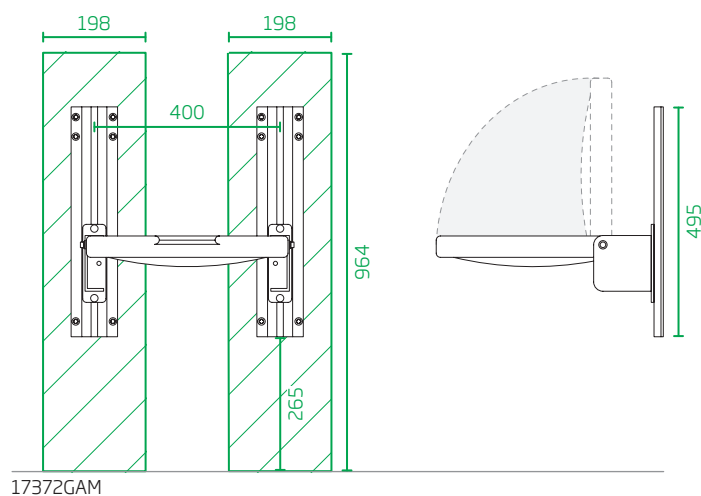


### CONSTRUCTION:

Construction reinforcements (2"x8" C24 or better quality) or birch plywood 21mm from the floor to the roof.

Load-bearing capacity for both products is 250 kg. For the Sense shower seat to the short term nominal load, 500kg, the fastener connected to e.g. 2"x8" (C24 or better quality) timber member has to be 12 x DIN 571 8x70. When the total thickness of tiles and drywall is not more than 25 mm.

**NOTE!** Before installation, see product's installation instructions.



Reinforcements of background structures must be made by professionals in accordance with good construction practice and local regulations.

# Gaius Regal height adjustable support rail 20106

## INTERFACE/INSTALLATION INSTRUCTIONS

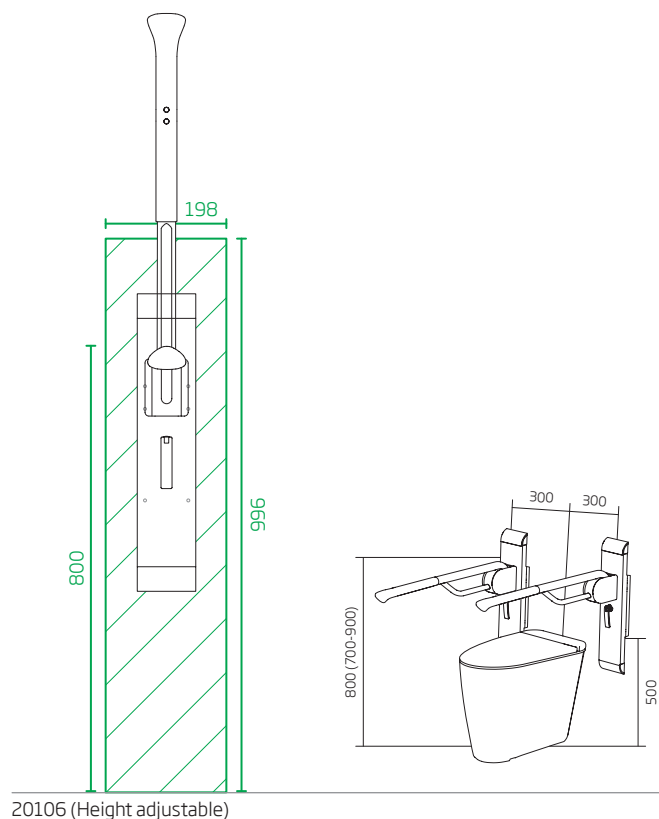


### CONSTRUCTION:

Recommended installation height from finished floor is 358,5 mm. Construction reinforcements (2"x8" C24 or better quality) or birch plywood 21mm from the floor to the roof.

Load-bearing capacity for both products is 250 kg.

**NOTE!** Before installation, see product's installation instructions.

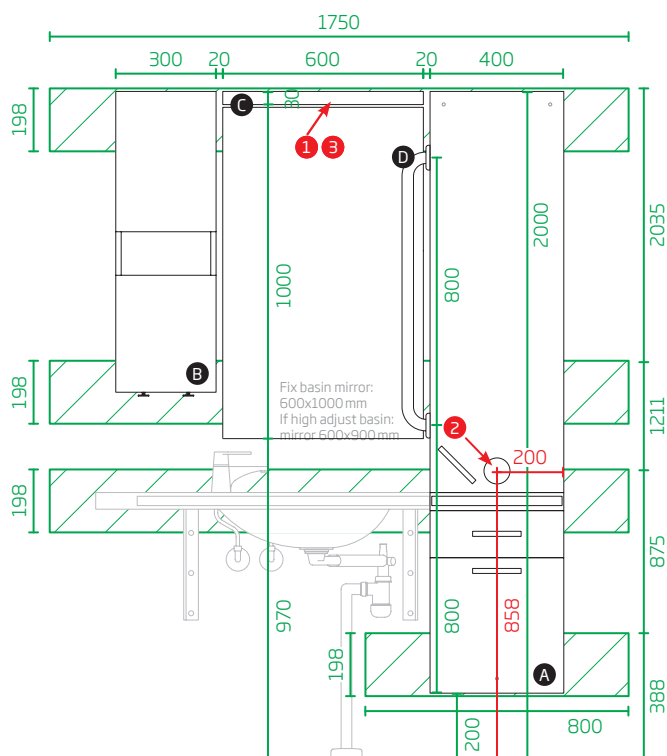


20106 (Height adjustable)

Reinforcements of background structures must be made by professionals in accordance with good construction practice and local regulations.

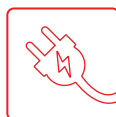
# Gaius cabinets & equipment cabinets 6300, 6309, 6313, 6314 & 6320

## INTERFACE/INSTALLATION INSTRUCTIONS



### CONSTRUCTION:

Recommended installation height from finished floor is 200 mm. Construction reinforcements (2"x8" C24 or better quality) or birch plywood 21mm from the floor to the roof.



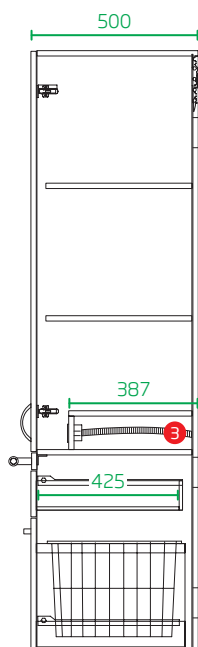
### ELECTRICAL:

1. Description for electrical use.
2. Description for electrical use.
3. Cable lenght from wall 600 mm.

A. High cabinets: 6300, 6309, 6313 & 6314.  
B. Equipment cabinets: 6320 HH, 6326, 6327, 6328, 6329 & 63003 HH.

C. Light 9557  
D. Solo 800 mm: 16802.

**NOTE!** Before installation, see product's installation instructions. Pay attention to the necessary space between the basin and the mirror, recommended space is 50 mm. Pay attention to leave necessary space between the sliding door and the cabinets.



High cabinet's sideview

Reinforcements of background structures must be made by professionals in accordance with good construction practice and local regulations.

# Gaius DUO

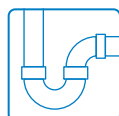
21273020 (Electric floor drain)  
 21273025 (Manual floor drain)  
 21273030 (Electric wall drain)  
 21273035 (Manual wall drain)

## INTERFACE/INSTALLATION INSTRUCTIONS



### ELECTRICAL:

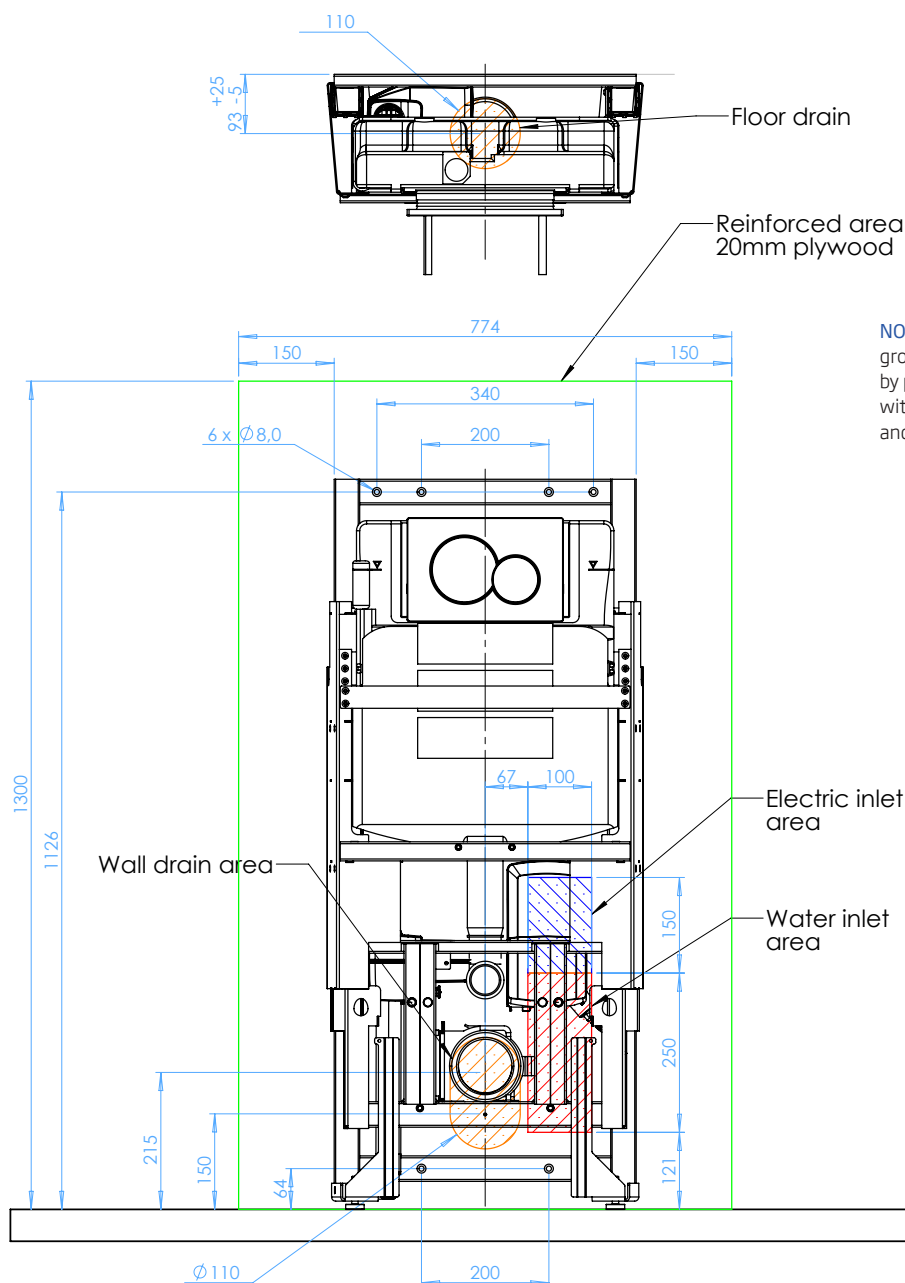
4. Junction box 230V AC IP44. Size 88x88x44. Not included. Socket must cut off to connect the cable.



### PLUMBING:

1. Water supply: G $\frac{1}{2}$ "xG $\frac{1}{2}$ " Cut-off valve. Max. depth 50 mm from the wall. Not included. 2. C holder LVI nr. 321944. Screw LVI nr. 3217174. Not included. 3. Connecting pipe G $\frac{1}{2}$ "xG $\frac{1}{2}$ " L1500 mm, LVI nr. 6522232. Not included.

**NOTE!** Before installation, see product's installation instructions. The electrical and water connection must not extend from the wall by more than 50 mm. Exceeding the maximum depth of 50 mm prevents the toilet seat's downward movement!

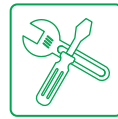
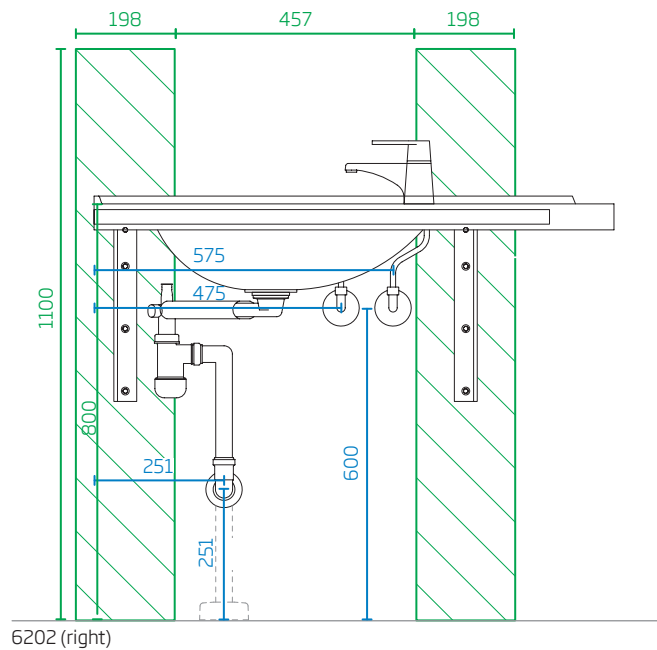


**NOTE!** Reinforcements of background structures must be made by professionals in accordance with good construction practice and local regulations.



## Gaius Original fixed basins 6202 & 6203

## INTERFACE/INSTALLATION INSTRUCTIONS

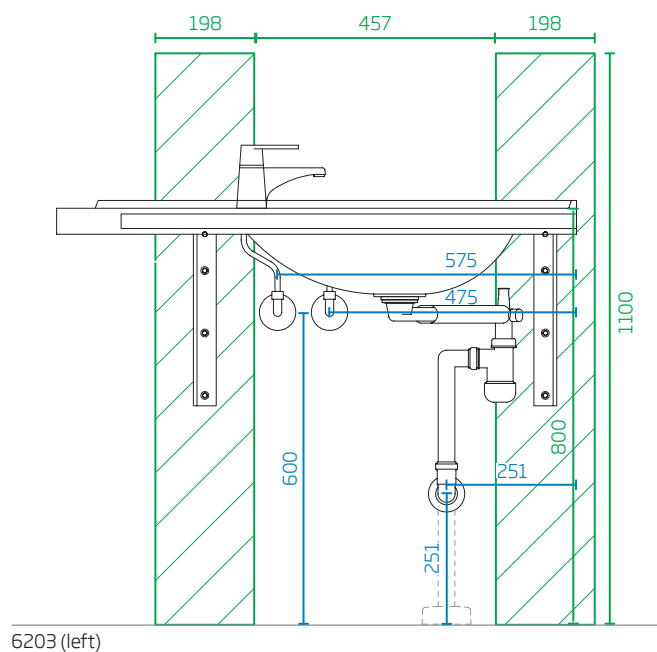


CONSTRUCTION:

Construction reinforcements (2"x8" C24 or better quality) or birch plywood 21mm from the floor to the roof.

Load-bearing capacity for these products is 225 kg.

**NOTE!** Before installation, see product's installation instructions.



Reinforcements of background structures must be made by professionals in accordance with good construction practice and local regulations.

# Gaius Original height adjustable basins

## 6202+6230 & 6203+6230

## INTERFACE/INSTALLATION INSTRUCTIONS



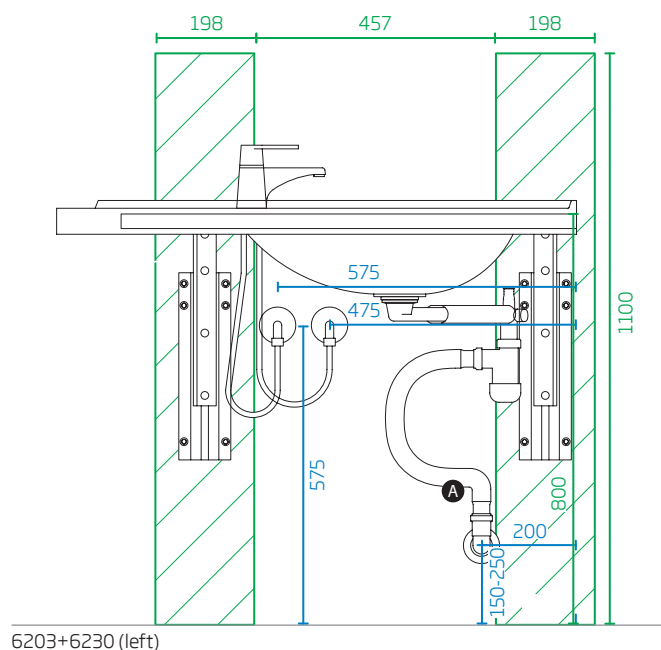
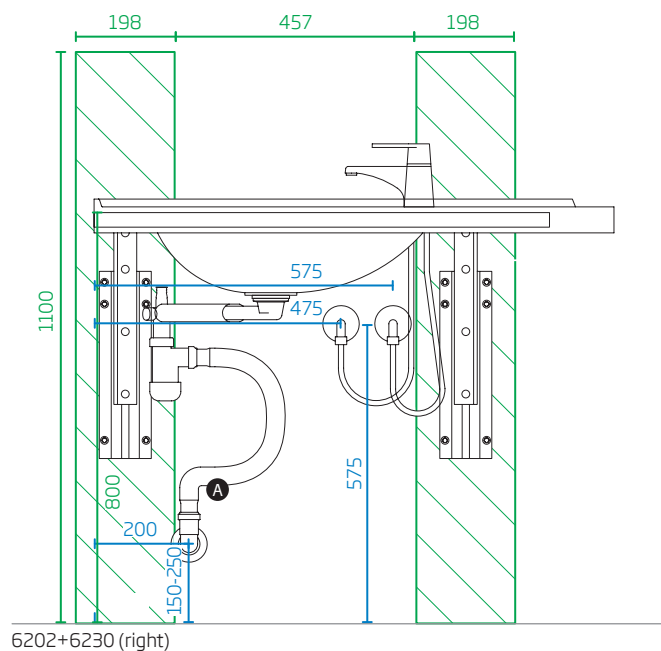
### CONSTRUCTION:

Construction reinforcements (2"x8" C24 or better quality) or birch plywood 21mm from the floor to the roof.

Load-bearing capacity for these products is 225 kg.

A. Flex sewer pipe:  
992600.

**NOTE!** Before installation, see product's installation instructions.



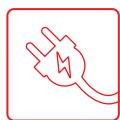
Reinforcements of background structures must be made by professionals in accordance with good construction practice and local regulations.

# Gaius Original right side height adjustable basins

## INTERFACE/INSTALLATION INSTRUCTIONS

6202+21273106

6202+21273107



### ELECTRICAL:

1. Joint box 230 V Max h 15 mm. IP44 or better.

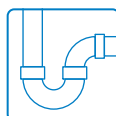


### CONSTRUCTION:

Construction reinforcements (2"x8" C24 or better quality) or birch plywood

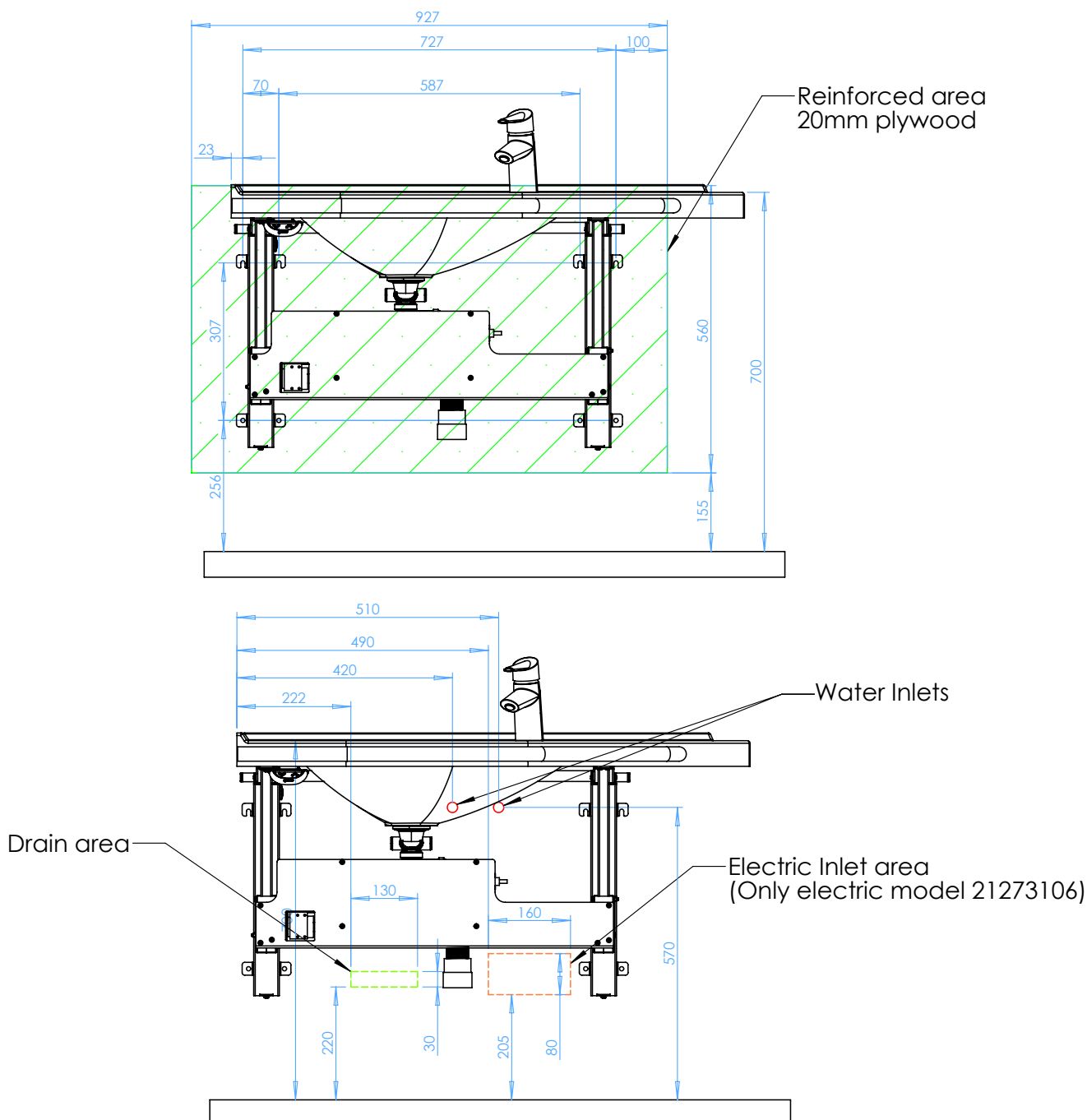
Load-bearing capacity for these products is 225 kg.

**NOTE!** Before installation, see product's installation instructions. Recommended free adjustable area for the basin is 700-900 mm.



### PLUMBING:

1. Water supply: G $\frac{1}{2}$ "xG $\frac{1}{2}$ " Cut-off valve. Max. depth 50 mm from the wall. Not included.
2. Connecting flex pipe G $\frac{1}{2}$ "xG $\frac{1}{2}$ " L500 mm, 2 pcs. Not included.

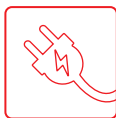


Reinforcements of background structures must be made by professionals in accordance with good construction practice and local regulations.

# Gaius Original left side height adjustable basins

## INTERFACE/INSTALLATION INSTRUCTIONS

6203+21273108  
6203+21273109



### ELECTRICAL:

1. Joint box 230 V Max h 15 mm. IP44 or better.

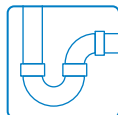


### CONSTRUCTION:

Construction reinforcements (2"x8" C24 or better quality) or birch plywood 20mm

Load-bearing capacity for these products is 225 kg.

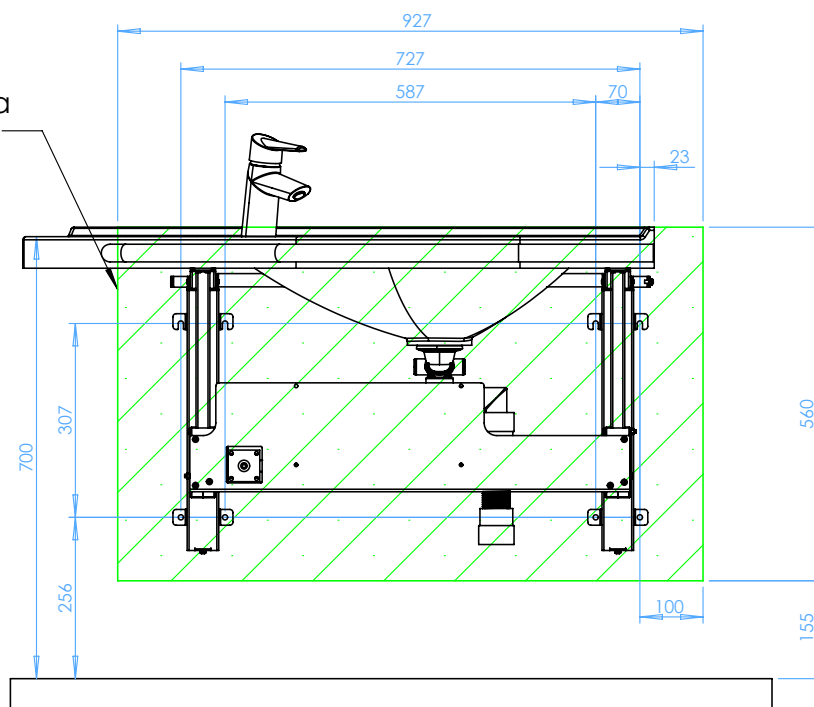
**NOTE!** Before installation, see product's installation instructions. Recommended free adjustable area for the basin is 700-900 mm.



### PLUMBING:

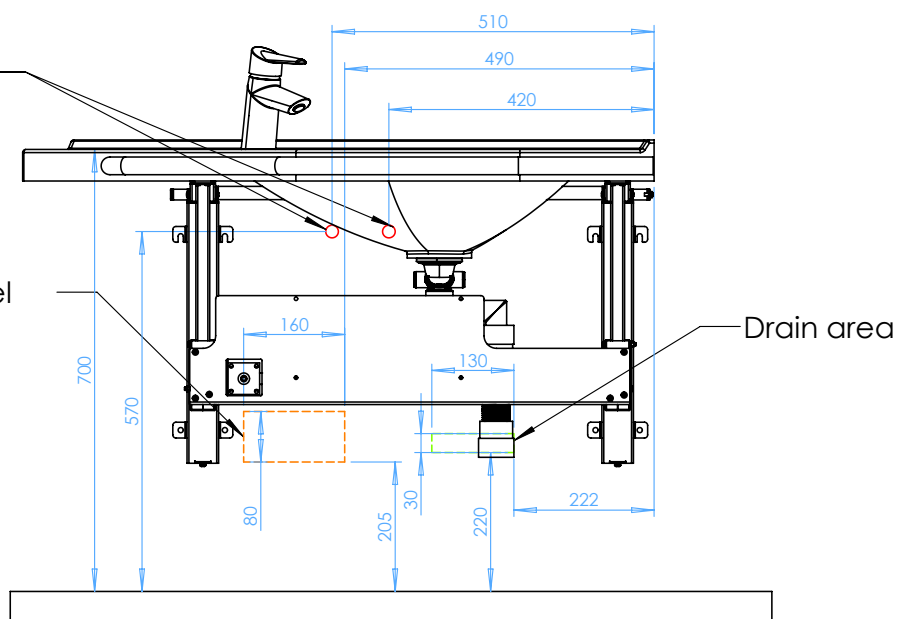
1. Water supply: G $\frac{3}{8}$ "xG $\frac{3}{8}$ " Cut-off valve. Max. depth 50 mm from the wall. Not included. 2. Connecting flex pipe G $\frac{3}{8}$ "xG $\frac{3}{8}$ " L500 mm, 2 pcs. Not included.

Reinforced area  
20mm plywood



Water Inlets

Electric Inlet area  
(Only electric model  
21273108)



Reinforcements of background structures must be made by professionals in accordance with good construction practice and local regulations.