

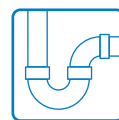
Gaius bathroom

Content

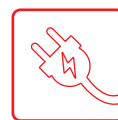
INTERFACE/INSTALLATION INSTRUCTIONS



Construction



Plumbing



Electrical

Gaius Modular shower supports
16399/16400 & 16388

Page
2



Gaius Solo shower supports
16805/16806 & 16804

3



Gaius Sense height
adjustable shower seats
17412 & 17413

4



Gaius height adjustable
shower seat
17372GAM

5



Gaius Regal height
adjustable support rail
20106

6



Gaius cabinets &
equipment cabinet
6300, 6309, 6313, 6314 & 6320

7



Gaius DUO
17782 & 17783

8



Gaius Original fixed basins
6202 & 6203

9



Gaius Original height
adjustable basins
6202+6230 & 6203+6230

10



Gaius Original crank
height adjustable basins
6202+21273107 & 6203+21273109

11

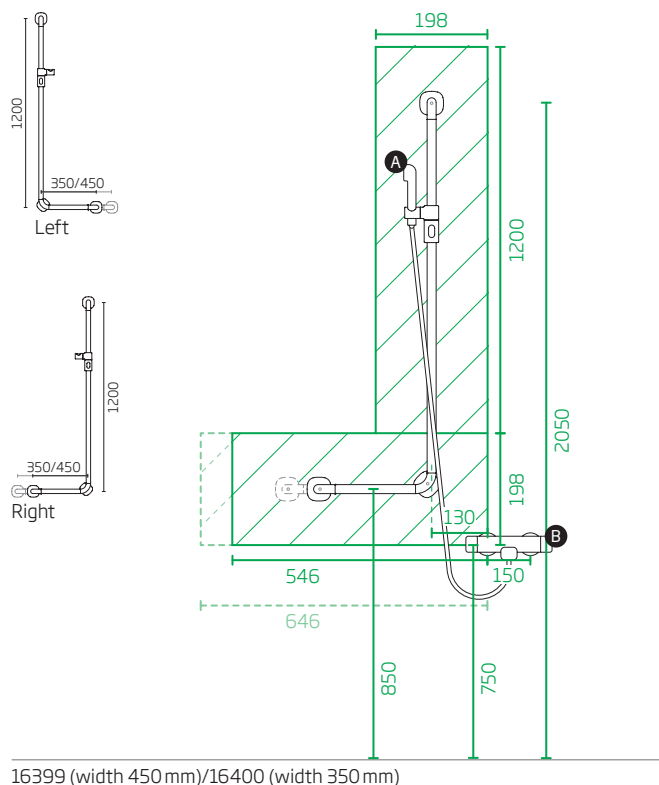


Gaius Original electric
height adjustable basins
6202+21273106 & 6203+21273108

12



Reinforcements of background structures must be made by professionals
in accordance with good construction practice and local regulations.



CONSTRUCTION:

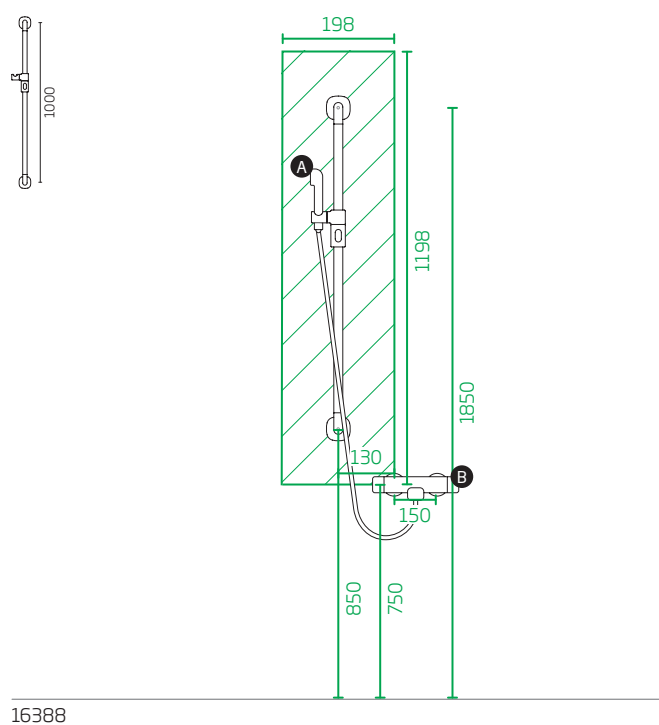
Construction reinforcements (2"x8" C24 or better quality) or birch plywood 21mm from the floor to the roof.

Load-bearing capacity for both products is 225 kg.

A. Oras Apollo 2520 + 241014, 1500 mm / prod.nr

B. Oras Optima 7160 / prod.nr 850015

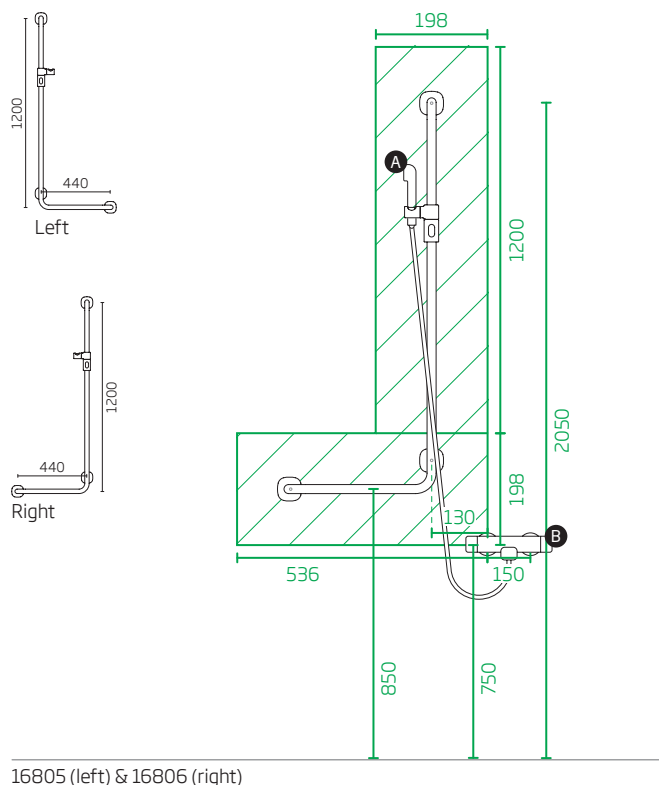
NOTE! Before installation, see product's installation instructions.



Reinforcements of background structures must be made by professionals in accordance with good construction practice and local regulations.

Gaius Solo shower supports 16805/16806 & 16804

INTERFACE/INSTALLATION INSTRUCTIONS



CONSTRUCTION:

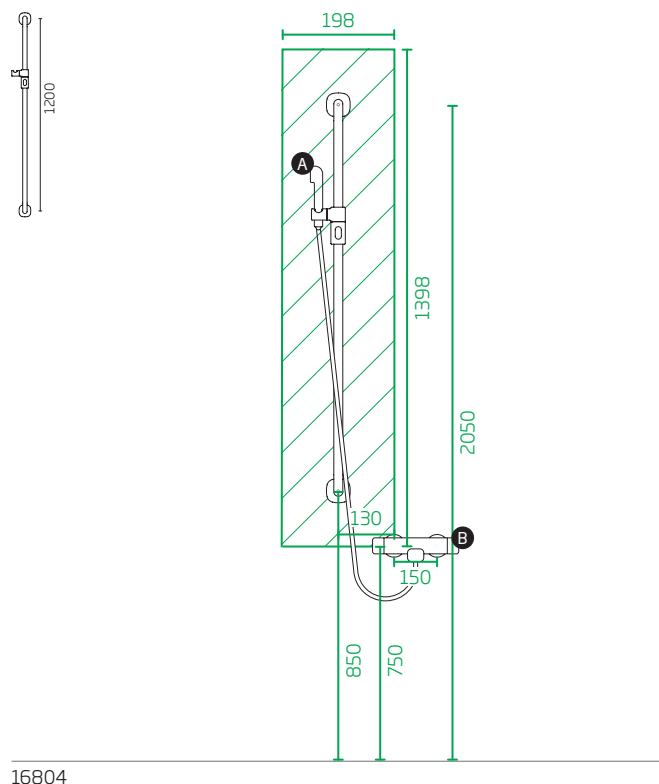
Construction reinforcements (2"x8" C24 or better quality) or birch plywood 21mm from the floor to the roof.

Load-bearing capacity for both products is 225 kg.

A. Oras Apollo 2520 + 241014, 1500 mm / prod.nr

B. Oras Optima 7160 / prod.nr 850015

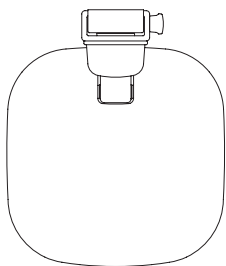
NOTE! Before installation, see product's installation instructions.



Reinforcements of background structures must be made by professionals in accordance with good construction practice and local regulations.

Gaius Sense height adjustable shower seats 17412 & 17413

INTERFACE/INSTALLATION INSTRUCTIONS

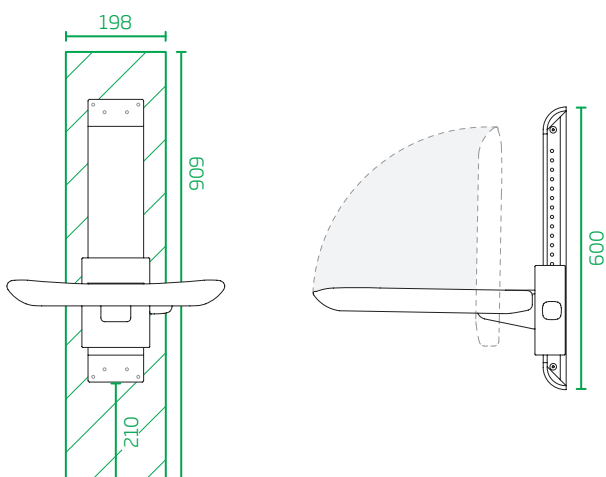


CONSTRUCTION:

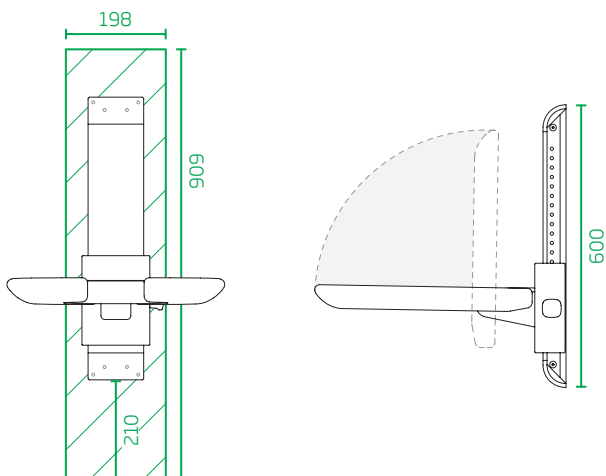
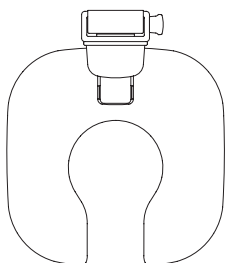
Construction reinforcements (2"x8" C24 or better quality) or birch plywood 21mm from the floor to the roof.

Load-bearing capacity for both products is 225 kg. For the Sense shower seat to the short term nominal load, 500kg, the fastener connected to e.g. 2"x8" (C24 or better quality) timber member has to be 8 x DIN 571 8x70. When the total thickness of tiles and drywall is not more than 25 mm.

NOTE! Before installation, see product's installation instructions.



17412

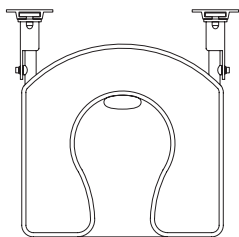


17413 (Open seat)

Reinforcements of background structures must be made by professionals in accordance with good construction practice and local regulations.

Gaius height adjustable shower seat 17372GAM

INTERFACE/INSTALLATION INSTRUCTIONS

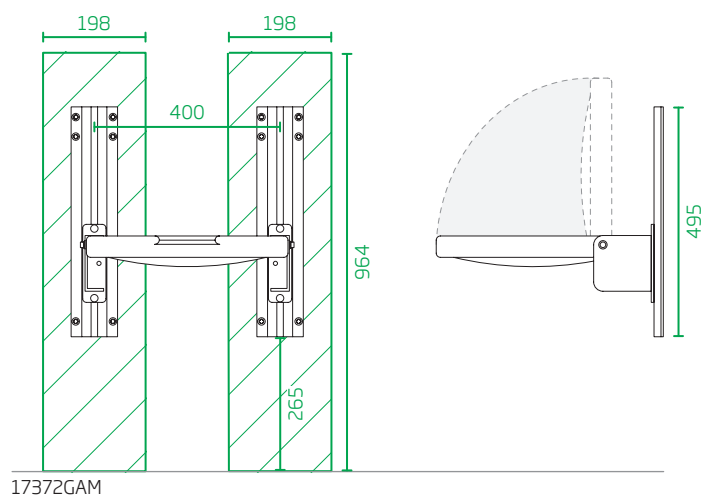


CONSTRUCTION:

Construction reinforcements (2"x8" C24 or better quality) or birch plywood 21mm from the floor to the roof.

Load-bearing capacity for both products is 250 kg. For the Sense shower seat to the short term nominal load, 500kg, the fastener connected to e.g. 2"x8" (C24 or better quality) timber member has to be 12 x DIN 571 8x70. When the total thickness of tiles and drywall is not more than 25 mm.

NOTE! Before installation, see product's installation instructions.



Reinforcements of background structures must be made by professionals in accordance with good construction practice and local regulations.

Gaius Regal height adjustable support rail 20106

INTERFACE/INSTALLATION INSTRUCTIONS

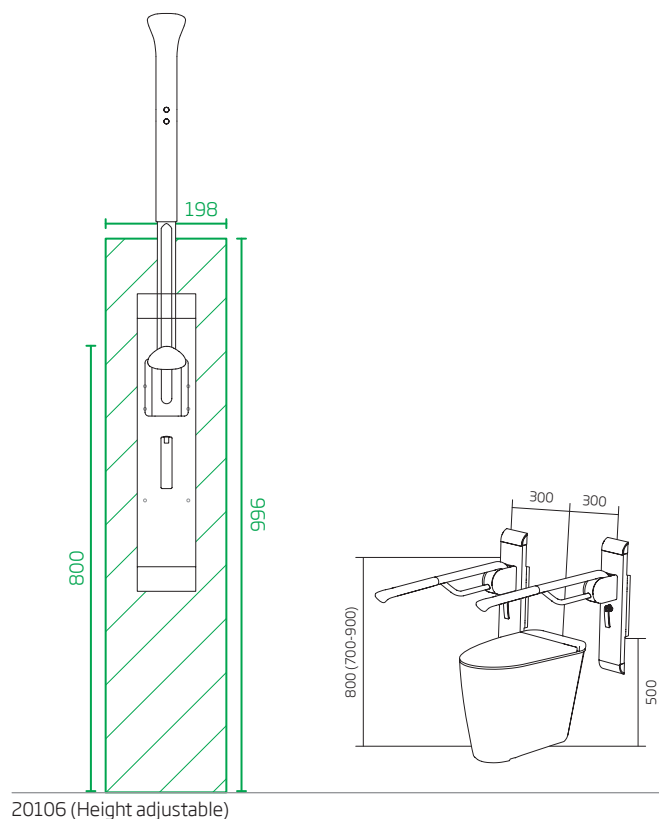


CONSTRUCTION:

Recommended installation height from finished floor is 358,5 mm. Construction reinforcements (2"x8" C24 or better quality) or birch plywood 21mm from the floor to the roof.

Load-bearing capacity for both products is 250 kg.

NOTE! Before installation, see product's installation instructions.

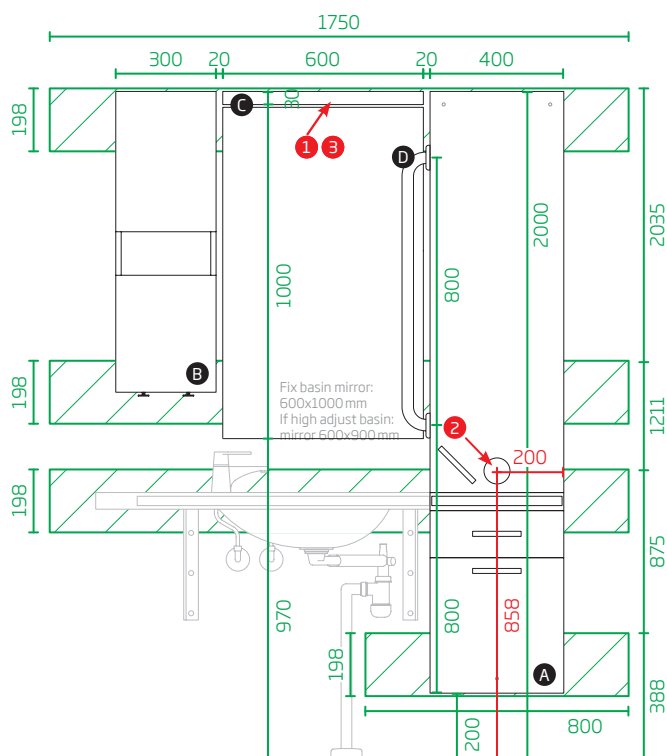


20106 (Height adjustable)

Reinforcements of background structures must be made by professionals in accordance with good construction practice and local regulations.

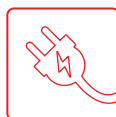
Gaius cabinets & equipment cabinets 6300, 6309, 6313, 6314 & 6320

INTERFACE/INSTALLATION INSTRUCTIONS



CONSTRUCTION:

Recommended installation height from finished floor is 200 mm. Construction reinforcements (2"x8" C24 or better quality) or birch plywood 21mm from the floor to the roof.



ELECTRICAL:

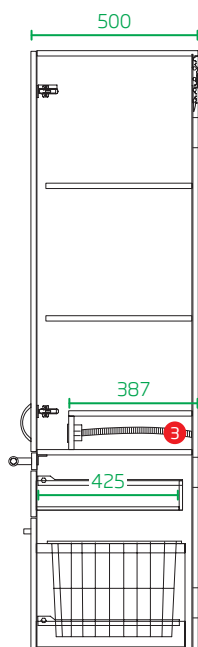
1. Description for electrical use.
2. Description for electrical use.
3. Cable lenght from wall 600 mm.

A. High cabinets: 6300, 6309, 6313 & 6314.
B. Equipment cabinets: 6320 HH, 6326, 6327, 6328, 6329 & 63003 HH.

C. Light 9557

D. Solo 800 mm:
16802.

NOTE! Before installation, see product's installation instructions. Pay attention to the necessary space between the basin and the mirror, recommended space is 50 mm. Pay attention to leave necessary space between the sliding door and the cabinets.

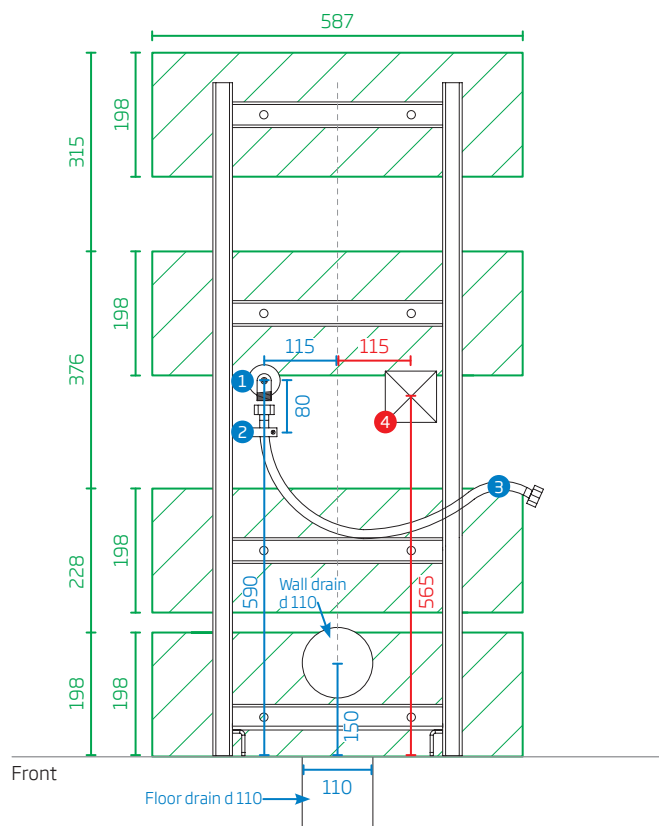


High cabinet's sideview

Reinforcements of background structures must be made by professionals in accordance with good construction practice and local regulations.

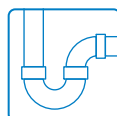
Gaius DUO 17782 & 17783

INTERFACE/INSTALLATION INSTRUCTIONS



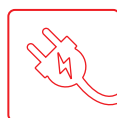
CONSTRUCTION:

Construction reinforcements (2"x8" C24 or better quality) or birch plywood 21mm from the floor to the roof.



PLUMBING:

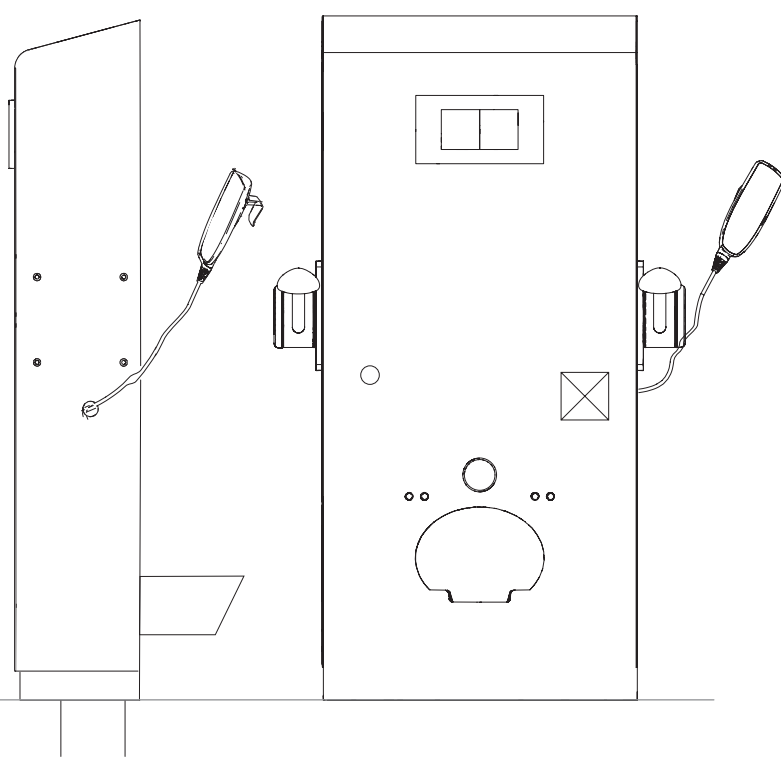
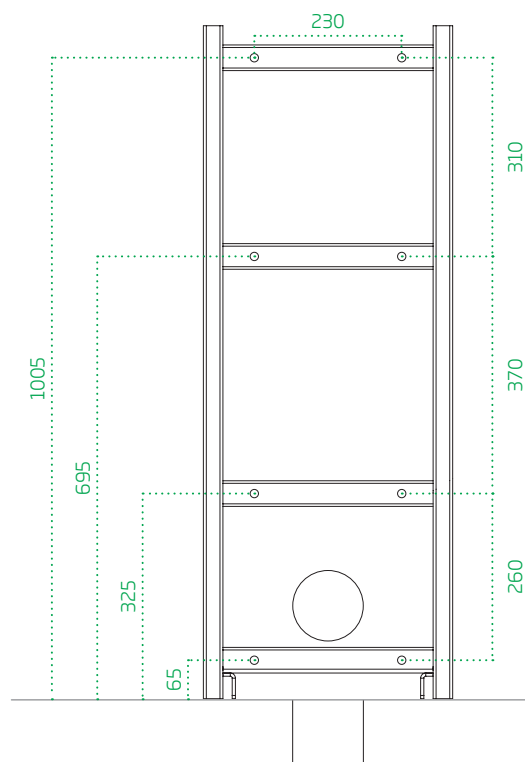
1. Water supply: G $\frac{3}{4}$ "xG $\frac{3}{4}$ " Cut-off valve. Max. depth 50 mm from the wall. Not included. 2. C holder LVI nr. 321944. Screw LVI nr. 3217174. Not included. 3. Connecting pipe G $\frac{3}{4}$ "xG $\frac{3}{4}$ " L1500 mm, LVI nr. 6522232. Not included.



ELECTRICAL:

4. Junction box 230V AC IP44. Size 88x88x44. Not included. Socket must cut of to connect the cable.

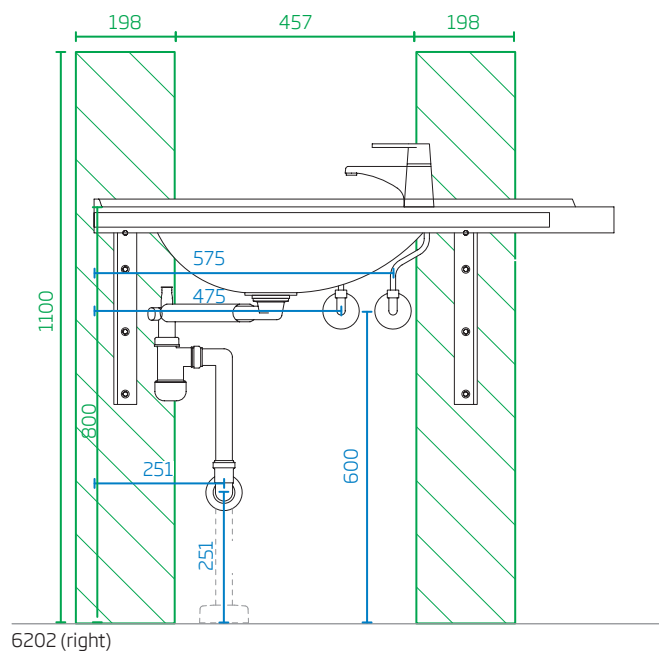
NOTE! Before installation, see product's installation instructions. The electrical and water connection must not extend from the wall by more than 50 mm. Exceeding the maximum depth of 50 mm prevents the toilet seat's downward movement!



Reinforcements of background structures must be made by professionals in accordance with good construction practice and local regulations.

Gaius Original fixed basins 6202 & 6203

INTERFACE/INSTALLATION INSTRUCTIONS

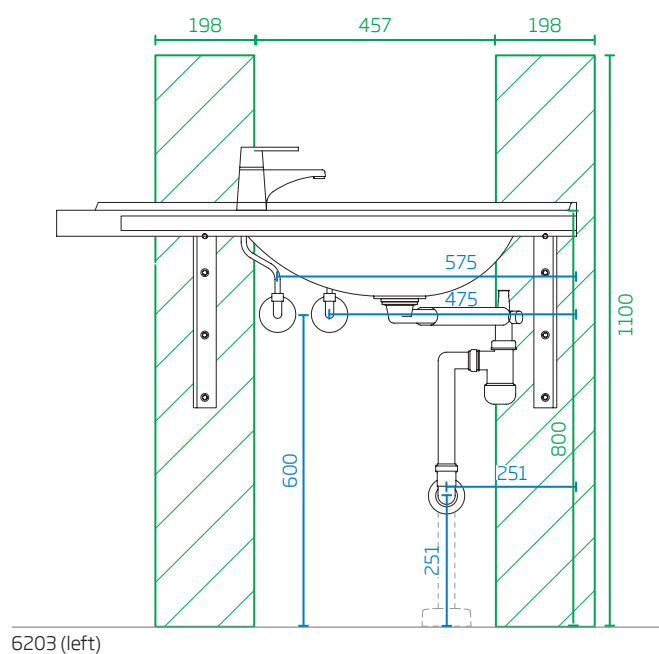


CONSTRUCTION:

Construction reinforcements (2"x8" C24 or better quality) or birch plywood 21mm from the floor to the roof.

Load-bearing capacity for these products is 225 kg.

NOTE! Before installation, see product's installation instructions.



Reinforcements of background structures must be made by professionals in accordance with good construction practice and local regulations.

Gaius Original height adjustable basins

6202+6230 & 6203+6230

INTERFACE/INSTALLATION INSTRUCTIONS



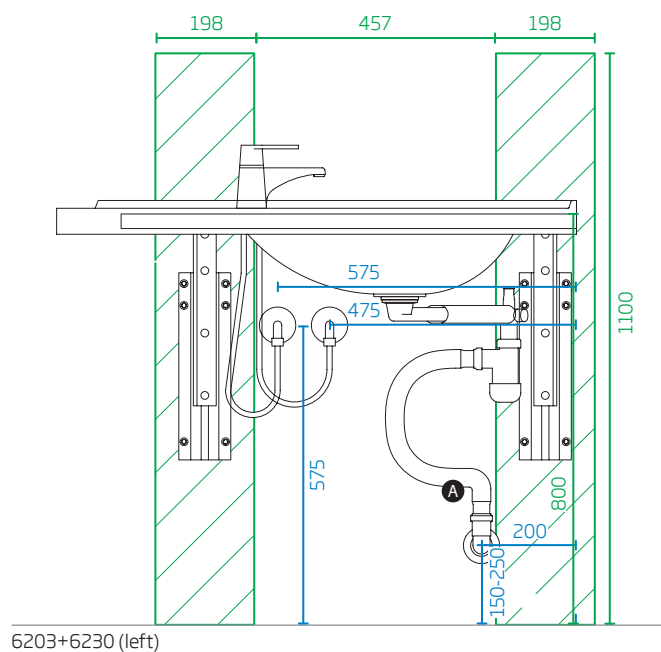
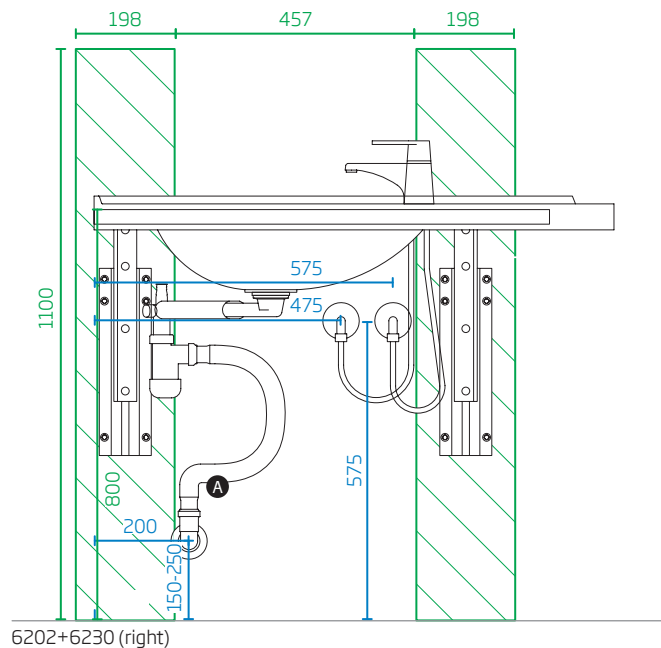
CONSTRUCTION:

Construction reinforcements (2"x8" C24 or better quality) or birch plywood 21mm from the floor to the roof.

Load-bearing capacity for these products is 225 kg.

A. Flex sewer pipe:
992600.

NOTE! Before installation, see product's installation instructions.



Reinforcements of background structures must be made by professionals in accordance with good construction practice and local regulations.

Gaius Original crank height adjustable basins

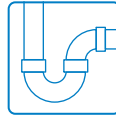
6203+21273107 & 6202 +21273107

INTERFACE/INSTALLATION INSTRUCTIONS



CONSTRUCTION:

Construction reinforcements (2"x8" C24 or better quality) or birch plywood 21mm from the floor to the roof.

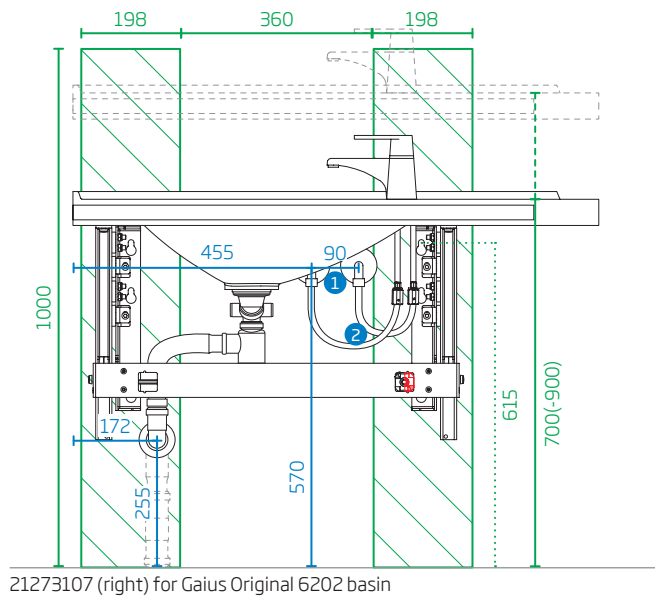


PLUMBING:

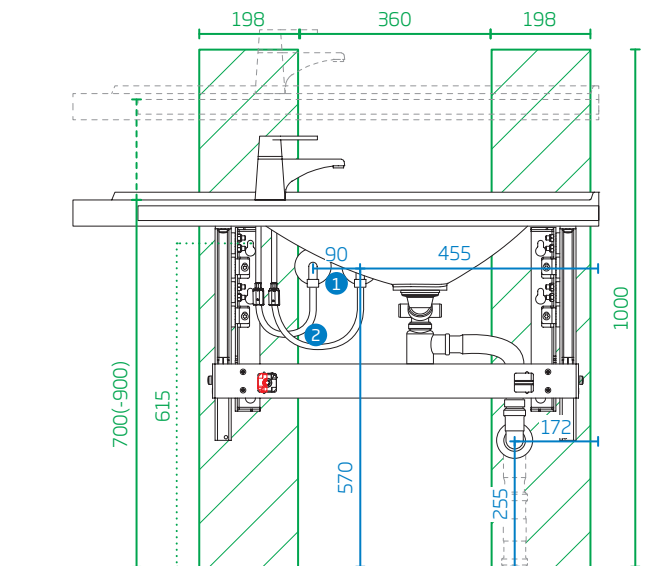
1. Water supply: G $\frac{1}{2}$ "xG $\frac{1}{2}$ " Cut-off valve. Max. depth 50 mm from the wall. Not included. 2. Connecting flex pipe G $\frac{1}{2}$ "xG $\frac{1}{2}$ " L500 mm, 2pcs. Not included.

Load-bearing capacity for these products is 225 kg.

NOTE! Before installation, see product's installation instructions. Recommended movement freedom for the basin is 700-900 mm from the floor.



21273107 (right) for Gaius Original 6202 basin



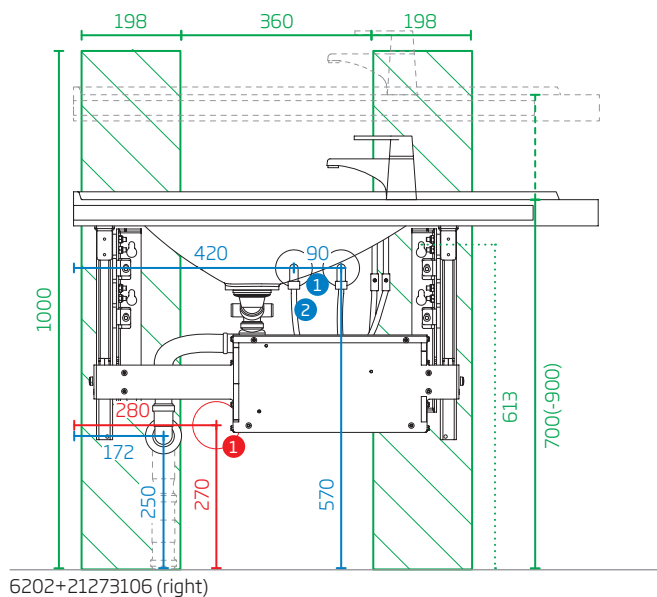
21273109 (left) for Gaius Original 6203 basin

Reinforcements of background structures must be made by professionals in accordance with good construction practice and local regulations.

Gaius Original electric height adjustable basins

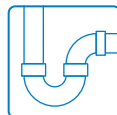
6202+21273106 & 6203+21273108

INTERFACE/INSTALLATION INSTRUCTIONS



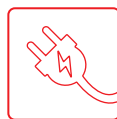
CONSTRUCTION:

Construction reinforcements (2"x8" C24 or better quality) or birch plywood 21mm from the floor to the roof.



PLUMBING:

1. Water supply: G $\frac{1}{2}$ "xG $\frac{1}{2}$ " Cut-off valve. Max. depth 50 mm from the wall. Not included. 2. Connecting flex pipe G $\frac{1}{2}$ "xG $\frac{1}{2}$ " L500 mm, 2 pcs. Not included.

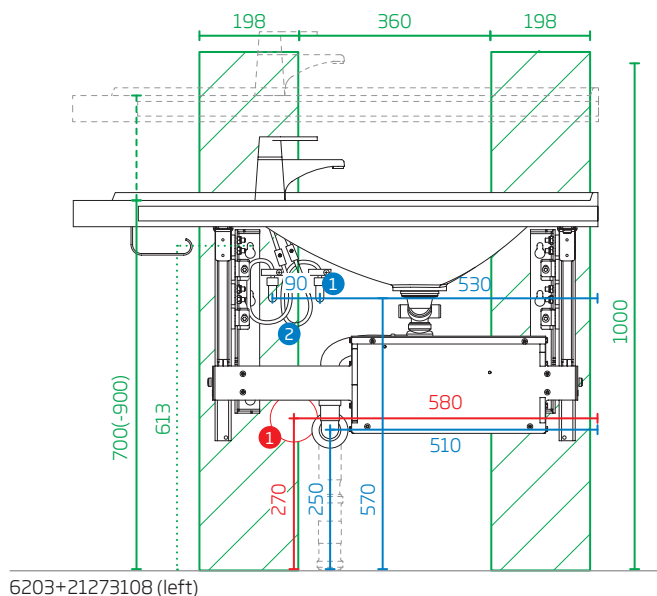


ELECTRICAL:

1. Joint box 230 V Max h 15 mm. IP44 or better.

Load-bearing capacity for these products is 225 kg.

NOTE! Before installation, see product's installation instructions. Recommended free adjustable area for the basin is 700-900 mm.



Reinforcements of background structures must be made by professionals in accordance with good construction practice and local regulations.