



# SAFE INTERIOR PRODUCTS FOR HEALING ENVIRONMENTS

Interior products and utensils for challenging environments, focus on both safety and design

# KORPINEN

Scandinavian  
Design for  
Safe & Healing  
Environments

HealSafe  
Interiör

*“Saving lives by design of  
healing environments”*

*– HealSafe Interiör*





# CONTENT

<b>HEALSAFE INTERIÖR</b>	<b>4</b>
<b>J-TRAC CURTAIN RAIL SYSTEM</b>	<b>6</b>
<i>Ceiling mounted, Wall mounted, Shower rail</i>	
<b>Curtains</b>	<b>10</b>
<i>Air, Acoustic, Dimout, Shower curtain</i>	
<b>HOOKS &amp; BOARD WITH HOOKS</b>	<b>12</b>
<b>J-TRAC HANGER SYSTEM</b>	<b>14</b>
<b>BATHROOM PRODUCTS</b>	<b>18</b>
<i>Bathroom - &amp; shower shelf, Toilet paper holder etc</i>	
<b>TOOTHBRUSHES &amp; PERSONAL CARE</b>	<b>22</b>
<i>Toothbrushes, Toothpaste, Deodorant, Razor ets</i>	
<b>TABLEWARE</b>	<b>24</b>
<i>Plates, Cutlery, Glasses &amp; Water pitcher</i>	
<b>INTERIOR PRODUCTS</b>	<b>26</b>
<i>Clocks, Whiteboard, Mirrors, Sound absorbent, Wall art etc</i>	
<b>PRODUCT DESIGN COLLABORATION</b>	<b>34</b>
<b>DISCLAMERS &amp; REFERENCES</b>	<b>35</b>

# HealSafe Interiör

Since 2010, we have emerged as specialists in interior design for challenging environments. Our first product was developed in close collaboration with a forensic psychiatric hospital in Sweden and since then the demand for solving the needs of users and staff has increased year by year. Today we can offer a completely unique and wide range of safe, robust, self-harm resistant and suicide preventive interior products.

Our products are used in challenging environments, such as psychiatric hospitals for children and adults, forensic psychiatric hospitals, youth homes, jails, prisons and in other public environments where safety requirements and harm prevention is crucial for both patients / clients and staff.

Our philosophy is based on a belief in Design as a means to create healing environments. Following our philosophy, we do not see any contradiction between safety and an attractive and well functional interior, which otherwise is commonly regarded as a dichotomy. We apply a user-oriented design process in our product development which we see as key to create products that meet real needs. The products we develop are solutions to problems identified by our customers who work clinically. This has created an opportunity for a dialogue-based development built on authentic cases and needs. Our products have thus become unique because they solve problems where solutions have not previously existed. Our products are patented or design protected to ensure quality and origin.







Safety (such as ligature resistance) per se does not create healing environments. Healing environments must be created through design that is based on the individual's and the facility's actual needs, evidence-based design and a caring approach. It is important to bear in mind that interior products can never replace the staff's expertise for screening patients / clients for harmful behaviour. However, a well thought-out interior design can support staff to carry out their work and contribute to a safer working environment.

Evidence-based design<sup>1-3</sup> for healing environment advocates the importance of autonomy. Examples of this are movable furniture, the possibility to regulate light, air and temperature, as well as being able to view nature. Moreover, the ability to choose personal spatial zones, and positive distractions such as art representing nature are known factors for reduced stress levels. Also, comfort, e.g. a comfortable bed is important for healing and reduced stress levels which can contribute to decreased risk of aggression and shorter stay. Robust and durable interior products are as well important features to a healing environment since they contribute to a respectful and sustainable environment, with the bonus of improved finances for the facility.

HealSafe's products are designed, developed and manufactured in Sweden, which guarantees a swift product development, ethical working environment, security of supply, and high quality.

*At HealSafe Interior we are happy to make interior design proposals and consultations as well as designing products to solve your needs. Welcome to schedule a meeting or a digital visit to our showroom in Gothenburg.*

<sup>1, 2, 3.</sup> References on page 67.

# J-TRAC CURTAIN RAIL SYSTEM

Unique and patented self-harm and suicide resistant curtain rail system for challenging environments.

To be able to design an interior with curtains not only creates a less institutional environment, it also allows control of daylight – an important factor for autonomy. Curtains contribute with warmth, colour and improved acoustics. *(Read more about our curtains on pages 10-11.)*

Unlike ordinary curtain rails, the patented design of the J-trac curtain rail resists the attachment of a string or similar to create a ligature. The rail is specifically designed to fit very tight to the surface of the wall or ceiling, which prevents it from being detached to be used as a weapon or a self-harm.

If an abnormal load is applied to the curtain runners they release from the rail, only leaving the runners and the curtain as detached parts. The runners are then very easy to clip right back to the rail and run with low friction. In addition, the simple release function allows for staff to easily remove the curtain if needed.

*The curtain rail is available in three versions*

- J-trac curtain rail - ceiling mounted
- J-trac curtain rail - wall mounted
- J-trac shower rail

With ordinary "slotted" rails where the runners run inside the rail (even with load release runners ) there is a considerable risk of inserting an object inside the rail, for example a pencil or a tightly rolled page from a magazine with a string around it. With the J-trac design that is not possible. With J-trac there is no longer any reason to avoid curtains for safety reasons.

Tested at RISE/SP in Sweden. Recommended by New York State Office of Mental Health.<sup>4</sup>

\*We use the term self-harm resistant as a collective term to include suicide attempts, self-harm and violence towards staff or patients.

<sup>4</sup> References on page 67.



Curtains enables own control of daylight and contributes with warmth, colour and improved acoustics



## J-TRAC CURTAIN RAIL – CEILING MOUNTED

- **Durable self-harm and suicide resistant curtain rail system for challenging environments**
- **No ligature fixation to the rail, curtain runners release at an abnormal load**
- **Easy to install, extremely difficult to detach rail parts**

The self-harm and suicide resistant curtain rail has a totally unique design and holds a world-wide patent. It's developed to meet challenges in psychiatric care and similar environments to contribute to a safe and healing environment.

Solid robust aluminum rail with durable powder coated surface. The runners run with low friction.

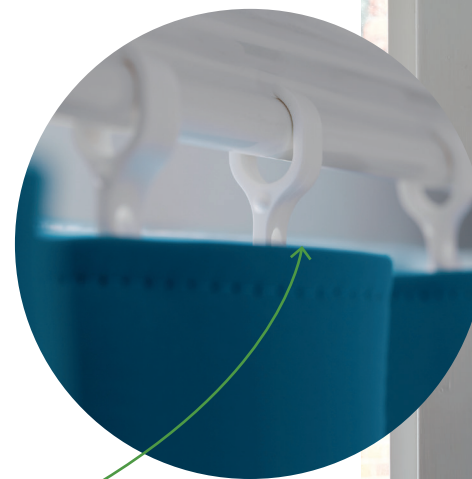
### J-TRAC CURTAIN RAIL\*, CEILING MOUNTED – JT 250

\* Cut to order or full length: 6100 mm

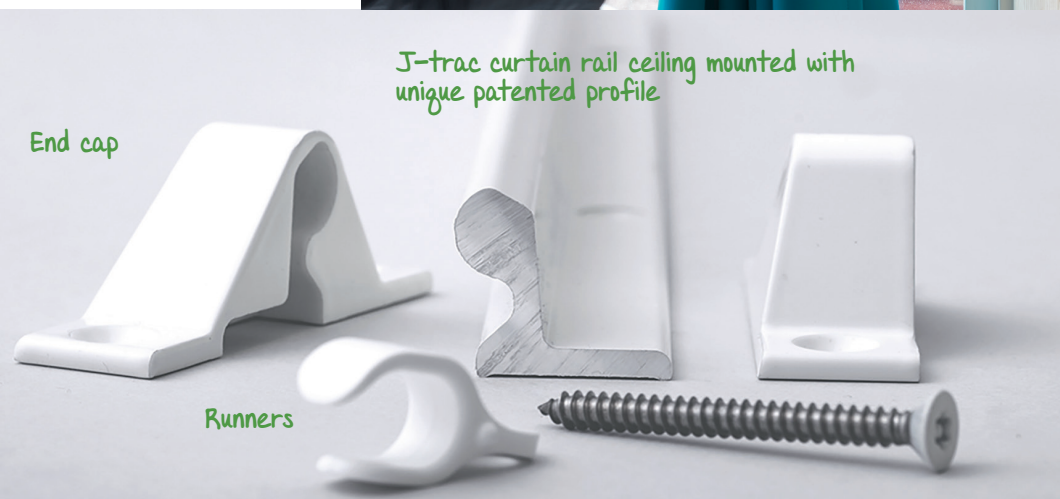
### J-TRAC END CAP CEILING, RIGHT – JT 253

### J-TRAC END CAP CEILING, LEFT – JT 265

### J-TRAC RUNNER, 10 PCS – JT 255



Patented runners that release when exposed to abnormal load



J-trac curtain rail ceiling mounted with unique patented profile

End cap

Runners

## J-TRAC CURTAIN RAIL – WALL MOUNTED

- **Durable self-harm and suicide resistant curtain rail system for challenging environments**
- **No ligature fixation to the rail, curtain runners release at an abnormal load**
- **Easy to install, extremely difficult to detach rail parts**

The self-harm and suicide resistant curtain rail has a totally unique design and holds a world-wide patent. It's developed to meet challenges in psychiatric care and similar environments to contribute to a safe and healing environment.

Solid robust aluminum rail with durable powder coated surface. The runners run with low friction.

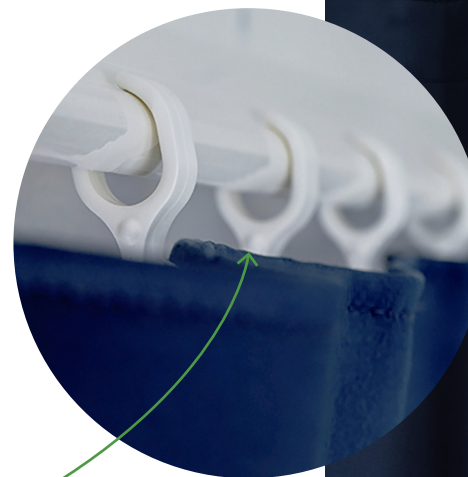
### J-TRAC CURTAIN RAIL\*, WALL MOUNTED – JT 251

\* Cut to order or full length: 6100 mm

### J-TRAC END CAP WALL, RIGHT – JT 254

### J-TRAC END CAP WALL, LEFT – JT 264

### J-TRAC RUNNER, 10 PCS - JT 255



Specially designed runners that release when exposed to risk load



J-trac curtain rail wall mounted with unique profile

Mounted with security screws

End cap



Runners



## J-TRAC SHOWER RAIL

- **Based on the self-harm and suicide resistant J-trac curtain rail – ceiling mounted**
- **No ligature fixation to the rail, curtain runners release at an abnormal load**
- **Easy to install. The rail is tightly fixed to the ceiling and it is extremely difficult to detach rail parts.**

The self-harm and suicide resistant shower rail has a patented and unique design. It's developed to meet challenges in psychiatry and similar environments to contribute to a caring, safe and healing environment.

The bathroom is one of the places where the risk of suicide and self-harm is the highest.<sup>5</sup>

Solid robust metal rail with durable powder coated surface. The runners run with low friction.

<sup>5</sup> References on page 67.

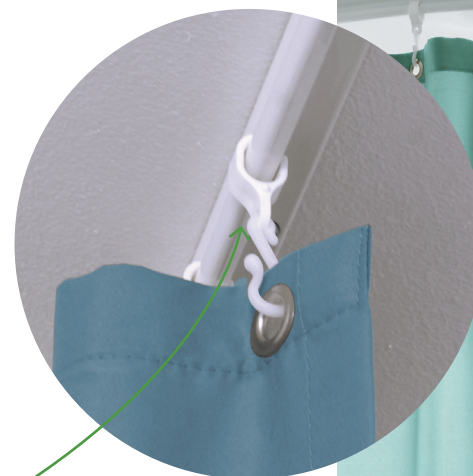
**J-TRAC SHOWER RAIL, 90°, 1450 mm – JT 252**

**J-TRAC SHOWER RAIL, 90°, 2000 mm – JT 262**

**J-TRAC END CAP, RIGHT – JT 253**

**J-TRAC END CAP, LEFT – JT 265**

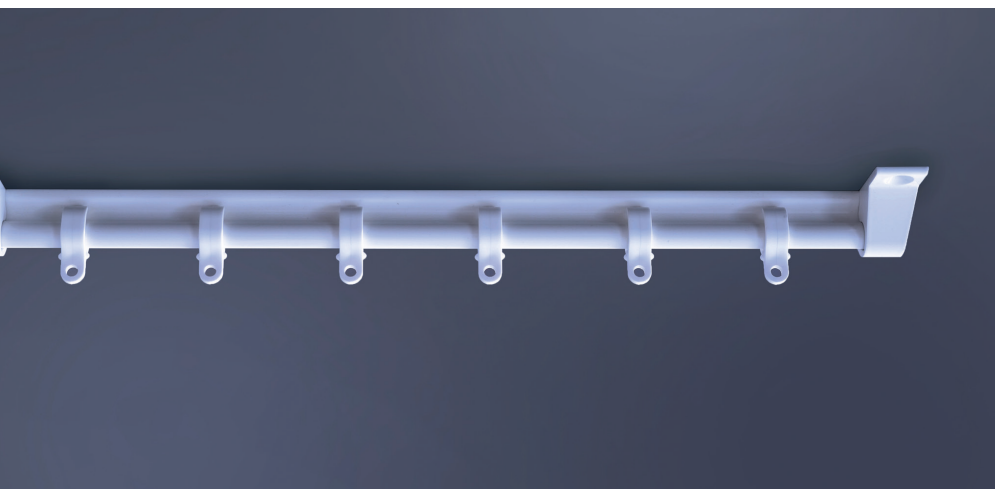
**J-TRAC RUNNER, 10 PCS – JT 255**



Patented runners that release when exposed to abnormal load



We offer tailor-made light shower curtains in fire-resistant textile, washable at 60 degrees



The rail is bent 90 degrees in a soft radius for the shower curtain to run smoothly



# CURTAINS

Being able to regulate light with the help of curtains adds a positive feature to the interior design through colour and soft materials. The fact that curtains not only contribute to a more caring environment but also have technical characteristics is perhaps not common knowledge. We have selected a collection of curtains with tailored properties such as sound absorption, odour control and light regulation which are important factors for lowering stress levels and thus creating better conditions for well-being. The collection we offer on the following pages meet the high standards for fire retardants, hygiene and sustainability.

We can offer sheer curtains that filter light, reduce outside noise, and protect patient privacy. Textiles offer the right to regulate light and views. We can also offer custom patterns or photos that can be digitally printed on the curtains. Please feel free to consult with us before ordering curtains. We will happily help you with fabric samples and advise which curtain type suits the need of your interior design best. All curtains are permanently flame retardant and tear resistant.





## AIR

The odour-neutralizing technique that breaks down the molecules is permanent and does not vanish or leak when washing the curtains.

## ACOUSTIC

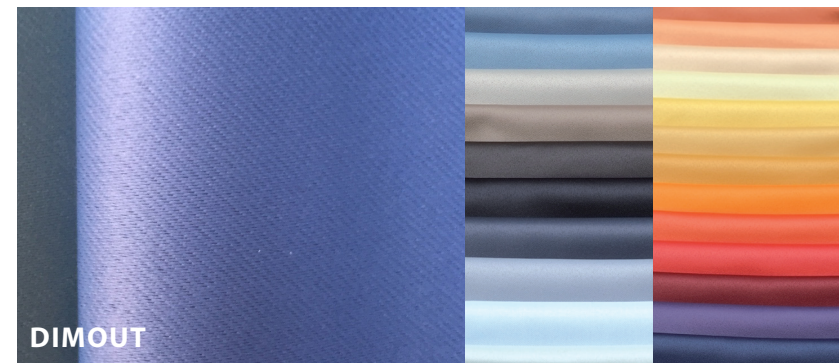
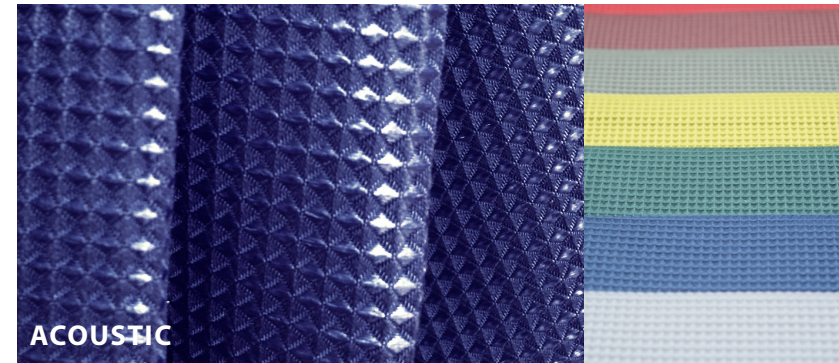
The unique curtain structure creates a three-dimensional surface that provides exceptionally good sound-absorbing properties (sound absorption class A). The structure also provides a beautiful pattern that reflects light and creates a subtle vivid impression.

## DIMOUT

Blackout curtains, so-called "dim-out", are a very practical and simple way to control the flow of light. It may seem obvious, but it is not everywhere patients and clients have the possibility to control the flow of natural light or surveillance lighting. It is well known that to shut out light provides better conditions for sleep. Sleep quality is a significant factor for well-being and lessen stress, which in turn can reduce ill-being, healing and aggression.

## SHOWER CURTAIN

The shower curtain is unique as it is washable in high temperature. In addition, a shower curtain is a flexible and economical way to prevent moisture and mold in bathrooms. But not least, it contributes to patient/user privacy.



# HOOKS & BOARD WITH HOOKS

- **Self-harm and suicide resistant hooks and board with hooks**
- **No ligature fixation points for a string or similar. Releases at 8-9 kg vertical load**
- **Easy to install, designed for a tight fit to the wall and extremely difficult to detach**

Despite the hook's "normal" appearance and attractive design, the meticulous choice of material combined with its unique design details entails the hook is both safe and functional. The patented self-harm and suicide-resistant hook is designed with the aim of adding color and design to the care environment.

The hook is developed in collaboration with Helix Forensic Psychiatry, Huddinge Hospital in Stockholm. It can handle the weight of several garments or towels, but when an abnormal weight over 9 kgs is applied in vertical downward direction the hook bends and releases. A string, a cord, or similar will then slide off the hook which thereafter regains its shape. Tests show that the hook still retains its shape and function after 1000 cycles of overload.

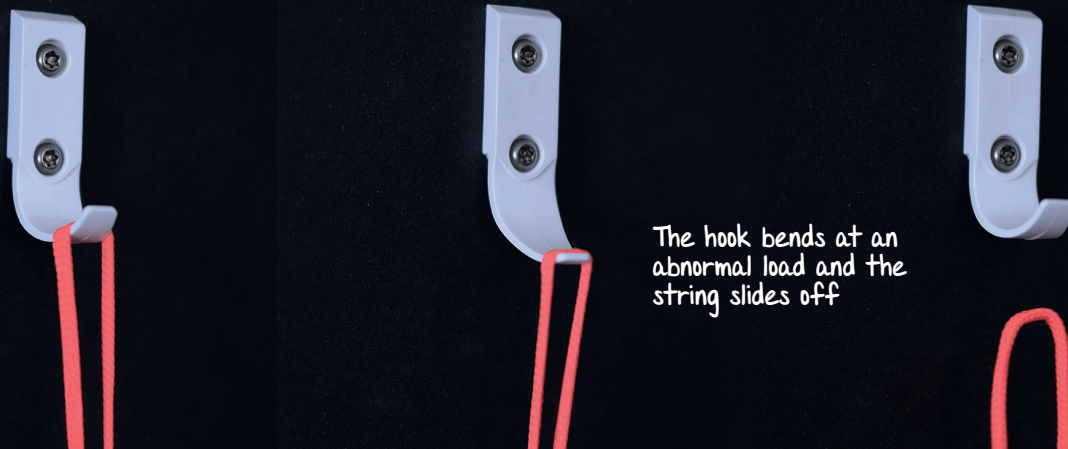
The board made in water resistant high pressure laminate has sloped edges and fits tight to the wall in order to avoid any ligature fixation.



**HOOK – JT 100**  
white, W: 20 mm H: 65 mm D: 35 mm



**HOOK – JT 101**  
black, W: 20 mm H: 65 mm D: 35 mm



The hook bends at an abnormal load and the string slides off







**HOOK – JT 103**  
grey, W: 20 mm H: 65 mm D: 35 mm



**HOOK – JT 104**  
blue, W: 20 mm H: 65 mm D: 35 mm



**HOOK – JT 102**  
red, W: 20 mm H: 65 mm D: 35 mm



**BOARD, 2 HOOKS – JT 150**  
2 hooks, W: 310 mm H: 90 mm D: 60 mm



**BOARD, 3 HOOKS – JT 151**  
3 hooks, W: 520 mm H: 90 mm D: 60 mm

The board has sloped edges and fits tight to the wall in order to avoid any ligature fixation

The hook can on request be produced in different colours





# J-TRAC HANGER SYSTEM

Fitting a closet with safe hangers is a challenge many facilities struggle with. Some may have developed their own solutions to prevent self-harm and suicide, or simply removed the hangers and rail, removing the ability to hang clothes.

Hanging your clothes, not folding them, is a necessity for many garments to look nice and fresh, and gives a good overview of your clothes.

Hanging your clothes contributes to increased normality. Research points out the importance of being able to keep your clothes in order and hang them.<sup>6</sup>

We have developed a self-harm and suicide resistant rail that is to be attached under a shelf or top of a wardrobe. It is not possible to attach anything to the rail other than J-trac hangers.

Through the smart hanger disc, you can switch between *J-trac hanger – light* or *J-trac hanger, light – paper*.

The J-trac hanger is available in three models (see pages 15-17). J-trac hanger is also designed to be hung on our ligature resistant hook – an easy way to air your clothes.

*J-trac hangers are sold in a pack of 5 hangers or as part of a whole system.*

MODEL:	LIGHT	ROBUST	LIGHT – PAPER
Suicide preventiv	•	•	•
Light weight	•		•
Washable	•	•	
Durable	•	•	

<sup>6</sup> References on page 67.



## J-TRAC HANGER, LIGHT

- **Self-harm and suicide resistant, releases from the rail at abnormal load**
- **Light and robust clothes hanger**
- **Hygienic**

**J-trac hanger, light** consists of a disc in thermoplastic polyurethane (TPU) and a replaceable clothes hanger in PUR foam. PUR foam is a unique material that is light and flexible but also extremely robust and tear resistant. Low weight reduces the risk of injury by impact.

In order for many garments to look good and keep well, it is necessary to be able to hang them. The J-trac hanger system is sized for wardrobes with a width of 600 mm or less, but can be specially ordered in longer lengths.



**J-TRAC HANGER, LIGHT – HS 907**  
5 pcs. W: 420 mm H: 200 mm

**J-TRAC HANGER SYSTEM, 5 LIGHT hangers - HS 901**  
5 hangers, 1 rail och 2 end caps

**J-TRAC HANGER, w/o disc, LIGHT – HS 911**

**J-TRAC HANGER, DISC – HS 908**





## J-TRAC HANGER, ROBUST

- *Self-harm and suicide resistant, releases from the rail at risk load*
- *Robust and durable clothes hanger*
- *Hygienic*

J-trac hanger, robust is made of polyurethane, an extremely robust elastic material that cannot be broken.

In order for many garments to look good and keep well, it is necessary to be able to hang them.

The J-trac hanger system is sized for wardrobes with a width of 600 mm or less, but can be specially ordered in longer lengths.



**J-TRAC HANGER, ROBUST – JT 903**

5 pcs. W: 390 mm H: 170 mm

**J-TRAC HANGER SYSTEM, 5 ROBUST hangers – HS 905**

5 hangers, 1 rail och 2 end caps





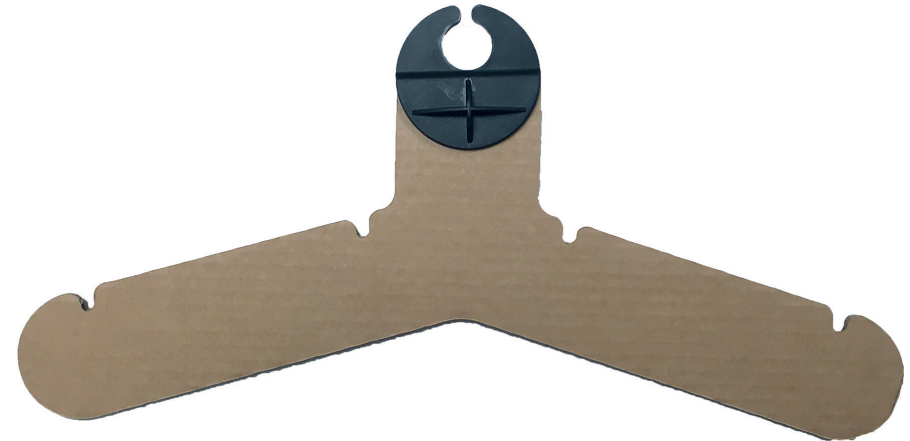
## J-TRAC HANGER, LIGHT – PAPER

- **Self-harm and suicide resistant, releases from the rail at risk load**
- **Interchangeable hanger**
- **Hanger can be printed with a pattern on request**

**J-trac hanger, light – paper** consists of a disc in thermoplastic polyurethane (TPU) and an interchangeable clothes hanger made of 2-ply corrugated cardboard. The hanger releases from the rail at a risk load.

The disc is easily attached to the hanger but can easily be opened if the hanger needs to be replaced.

The J-trac hanger system is sized for wardrobes with a width of 600 mm or less, but can be custom ordered in other lengths.

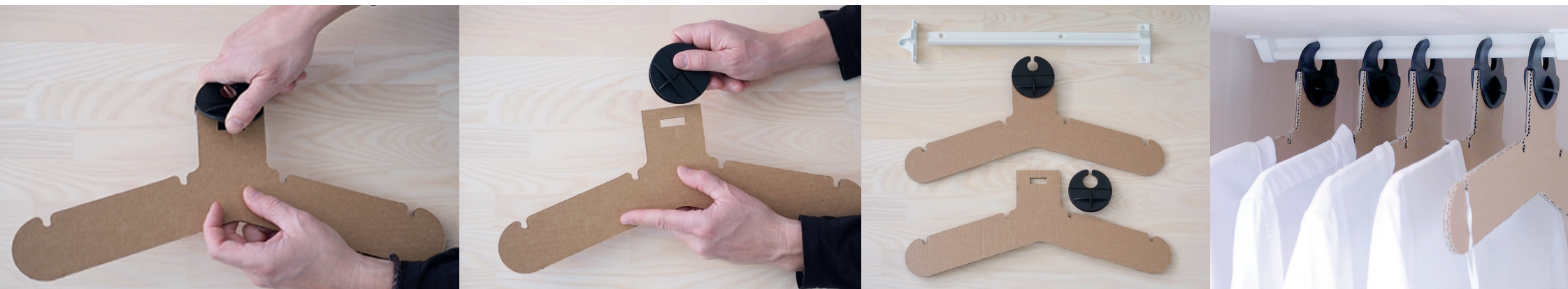


**J-TRAC HANGER, LIGHT - PAPER – HS 902**  
5 pcs. W: 420 mm H: 200 mm

**J-TRAC HANGER SYSTEM, 5 LIGHT - PAPER hangers – HS 900**  
5 hangers, 1 rail och 2 end caps

**J-TRAC HANGER, w/o disc, LIGHT - PAPER, 25 pcs – HS 909**

**J-TRAC HANGER, DISC – HS 908**



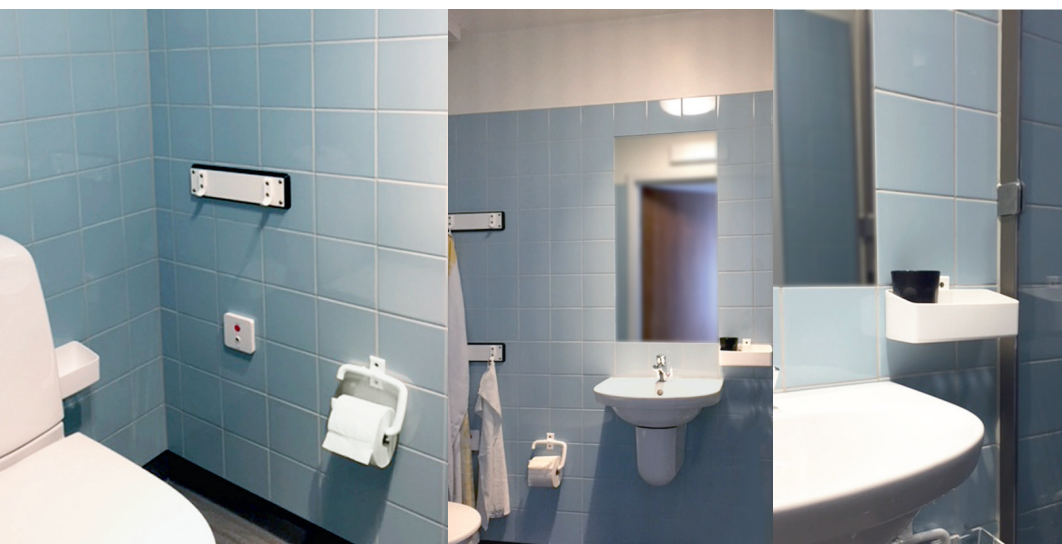
## BATHROOM PRODUCTS

Bathrooms in challenging environments are places where there is a high risk of self-harm. Due to the respect of privacy (non-observational space), and the design of the interior itself, bathrooms are commonly designed in a way that may pose risks of self-harm. Therefore, it is specifically important to avoid ligature points in en-suite bathrooms.

Despite the high-risk environment, safe bathroom products can by their design and choice of material offer a good and easy-to-understand function that contributes to a higher level of safety. It is common in facilities that interior products are reduced to a minimum to reduce risk, which leaves a poor and non functional environment.

Together with the facility, we solve the problems and needs that arise.

A pioneering project is the test room at Nacka Psychiatric clinic where one strives purposefully to create a safe and well-designed environment (*see below*).





## BATHROOM - & SHOWER SHELF

- **Self-harm and suicide resistant shelf that releases from the wall bracket at an abnormal load**
- **Strong and durable plastic that cannot be made sharp**
- **Large radius corners for hygiene and reduced risk of injury**

The shower shelf is designed to hold the weight of a few hygiene products, but when additional force is applied it releases from the bracket. The design of the wall bracket with its bevelled edges and flexible brackets prevent creating a ligature point that holds an abnormal load. The bottom of the shelf is designed with large holes for drainage.



**BATHROOM SHELF – JT 220**

incl 2 glasses. W: 210 mm H: 100 mm D: 100 mm



**SHOWER SHELF – JT 210**

white, W: 210 mm H: 100 mm D: 100 mm  
(Also available in black)



The shelf releases from the wall bracket at an abnormal load



**SHOWER SHELF – HS 211**

transparent, W: 210 mm H: 100 mm D: 100 mm

## BATHROOM PRODUCTS – Light Weight (LW)

- **Light weight and semi-rigid polypropylene that cannot be made sharp**
- **The products release from the wall bracket at an abnormal vertical load**
- **Rounded corners for hygiene and reduced risk of injury**

Our lightweight (LW) series consists of a range of bathroom products made of laser-cut, frosted and slightly transparent PP (polypropylene) plastic. The PP plastic is a light weight and semi-rigid material that does not become sharp, to prevent injuries. The wall bracket design resists the attachment of a string or similar.

The lightweight products have a somewhat limited life cycle. They can be washed and cleaned with detergents but should be considered as reusable safety products that with time need to be replaced.



**WASTE BIN, LW – JT 700**

W: 270 mm H: 450 mm D: 180 mm

**SANITARY BIN, LW – JT 701**

W: 190 mm H: 350 mm D: 140 mm



**PAPER TOWEL HOLDER, LW  
– JT 703**

W: 240 mm H: 230 mm D: 130 mm

**PAPER TOWEL HOLDER, LW  
COVERED – JT 702**

W: 240 mm H: 230 mm D: 130 mm

## TOILET PAPER HOLDER

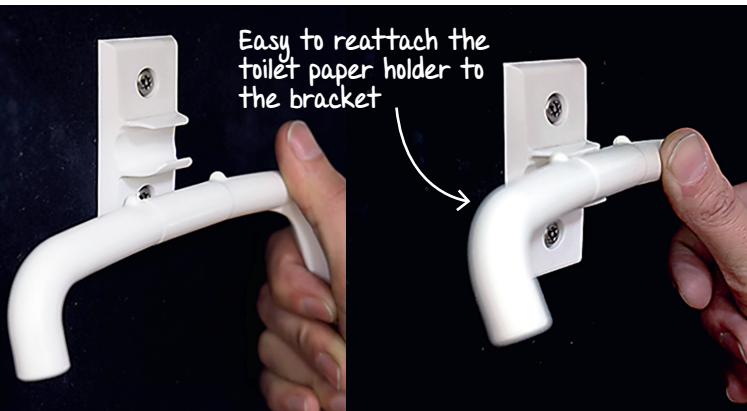
- ***Suicide resistant toilet paper holder - releases from the wall bracket at an abnormal load***
- ***Highly flexible material, the toilet paper holder cannot be broken, nor sharpened***
- ***Large radius corners for reduced risk of injury***

Designed with simplicity and clarity in its form and function. The design of the wall bracket with its bevelled edges and flexible brackets prevents creating a ligature point that holds an abnormal load.

The bracket is tested to withstand over 1000 overloads, and still retains its shape and function. Designed in collaboration with Region Hovedstaden Psychiatry, Copenhagen, Denmark.



**TOILET PAPER HOLDER – JT 200**  
W: 160 mm H: 150 mm D: 20 mm



## TOILET BRUSH

- ***The shaft is in a flexible material that is difficult to break. Cannot be sharpened, if broken.***
- ***Looks and works like an ordinary toilet brush***
- ***Including wall mounted holder and bracket***

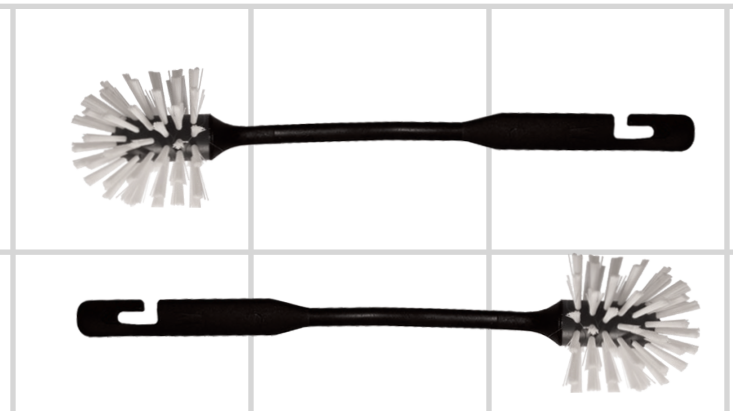
An ordinary toilet brush can be broken and used as a sharp tool. Our design reduces the risk of self-harm or the risk of harming someone else. The flexible brush is made of a specially developed flexible plastic. The toilet brush holder is hung on a wall bracket to facilitate floor cleaning. The wall bracket is flexible and ligature resistant.



**TOILET BRUSH, 5 pcs – HS 205**  
W: 390 mm B: 75 mm D: 90 mm



The shaft is in a flexible material and does not risk to become a sharp object





## SOAP DISPENSER & SUPPORT HANDLES

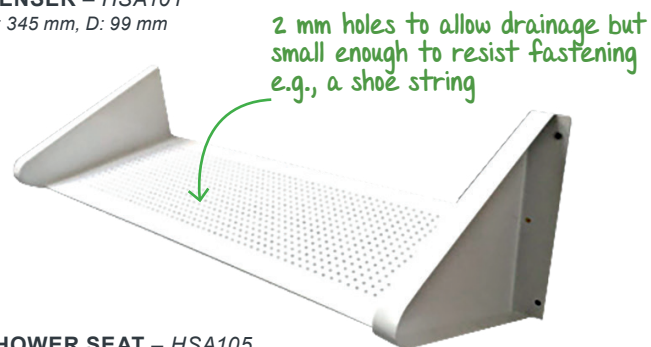
- **Self-harm resistant products for bathrooms**
- **Safe and robust**
- **Designed for easy hygiene control a minimized risk of damage**

Pull handles, grip and support rails that provide extra support.



Sloped top to reduce the risk of ligature points

**SOAP DISPENSER – HSA101**  
W: 191 mm, H: 345 mm, D: 99 mm



2 mm holes to allow drainage but small enough to resist fastening e.g., a shoe string

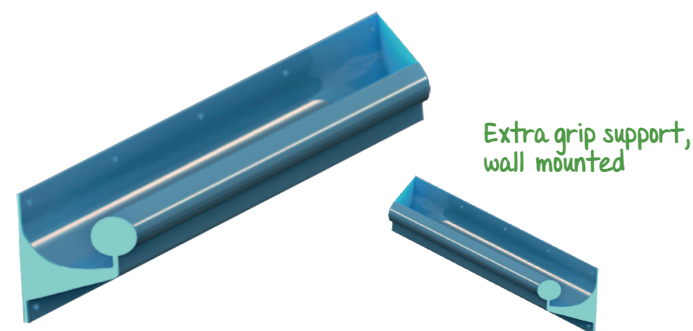
**SHOWER SEAT – HSA105**  
W: 600 mm, H: 247 mm, D: 250 mm



**PULL HANDLE 450 – HSA106**  
H: 450 mm, W: 32 mm

**PULL HANDLE 600 – HSA107**  
H: 600 mm, W: 32 mm

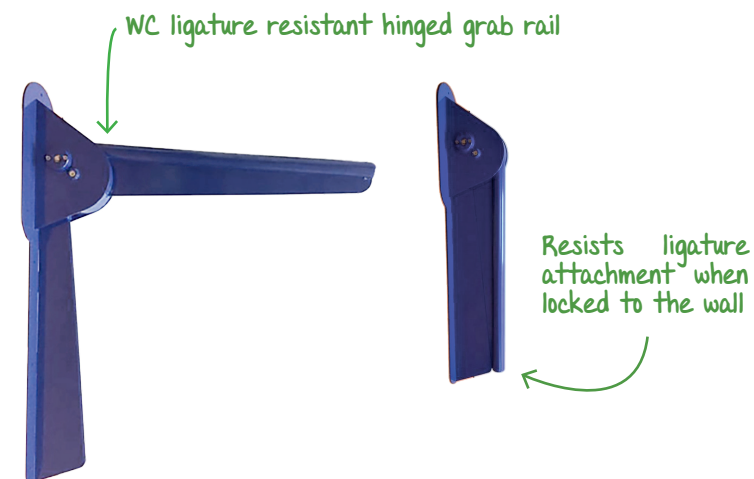
**PULL HANDLE 800 – HSA108**  
H: 800 mm, W: 32 mm



Extra grip support, wall mounted

**GRAB RAIL, RIGHT – HSA109**  
H: 38 mm, L: 600 mm

**GRAB RAIL, LEFT – HSA110**  
H: 38 mm, L: 600 mm



WC ligature resistant hinged grab rail

Resists ligature attachment when locked to the wall

**HINGED GRAB RAIL – HSA111**  
Blue

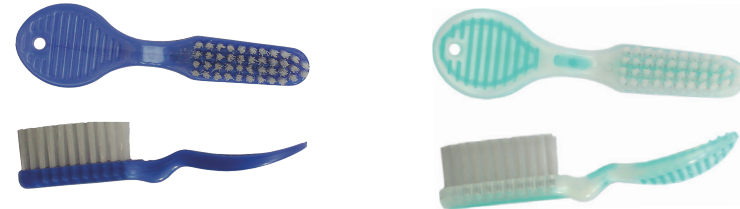
# TOOTHBRUSHES AND PERSONAL CARE

- *Hygiene products with safety and health in focus*
- *Designed specifically for challenging environments*
- *Products in flexible materials so that they cannot be broken and sharpened*

In many environments with high safety requirements, it is not possible for clients / patients to independently choose hygiene products because the care setting must relate to the fact that certain hygiene products may pose a safety risk, and therefore are not possible to use.

Evidence-based Design, EBD, shows that control of the physical environment lowers stress levels, which can reduce aggression and promote healing.

The toothbrushes are available in several models, all of which are safe and flexible. Transparent packaging makes it difficult to hide objects or manipulate the packaging.



**DISPOSABLE TOOTHBRUSH, PRE-PASTED – HSO626**

L: 70 mm, 30 pcs

**TOOTHBRUSH – HSO-623**

L: 70 mm, 30 pcs

All toothbrushes have soft shafts and cannot be sharpened



**TOOTHBRUSH FULL HANDLE – HSO622**

L: 160 mm, 30 pcs



**TOOTHBRUSH FLEX – HSO624**

L: 100 mm, 30 pcs



**TOOTHBRUSH – HSO625**

L: 100 mm, 30 pcs





**TOOTH GEL, CLEAR FLOURIDE – HSO627**  
transparent tube, 28 gr, 10 pcs



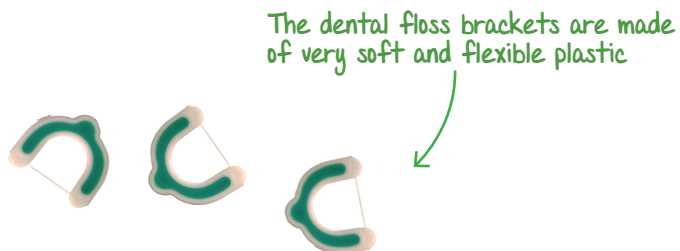
**TOOTHPASTE FLOURIDE – HSO628**  
42 gr, 10 pcs



**FLEXIBLE FLOSSER/TOOTHPICK – HSO631**  
100 pcs



**DEODORANT – HSO629**  
transparent tube, 56 gr, 10 pcs



**FLEXIBLE U-FLOSSER – HSO630**  
100 pcs



**SECURE RAZOR – HSO632**  
30 pcs, disposable



# TABLEWARE

- **Self-harm resistant tableware**
- **Made of durable and unbreakable plastic with specific material properties and design to minimize the risk of creating sharp objects.**
- **Reusable products, which contributes to less environmental impact compared to disposable products**

The tableware is designed to reduce the risk of self-harming behaviour and harm to others. Safe glasses, plates and cutlery are important for many care settings that strive for patient safety and a safe working environment for staff.

Our goal is to offer tableware with a simple and recognizable form for a "normalized" environment.



# CUTLERY

- **Self-harm and suicide resistant cutlery for challenging environments**
- **Cutlery in semiflexible plastic that minimizes the risk of sharp objects**
- **Dishwasher safe**

The cutlery is designed to reduce self-harming behaviour or harm to others. The design reduces the amount of material that can be sharpened or cause damage. Made of durable and semiflexible plastic with specific material properties to minimize the risk of creating sharp objects. Difficult to break, if broken the edges are not as sharp as with harder plastics.

The performance of the cutlery cannot be compared with cutlery made of harder plastics or stainless steel, but are aimed for users with severe risk of self-harm, or harming others. The cutlery is used by the Swedish prison services, psychiatric hospitals and youth homes - not least for young people with severe self-harm problems.



**KNIFE ORANGE, FLEXIBEL – JT 641**  
25 pcs

**FORK ORANGE, FLEXIBEL – JT 640**  
25 pcs

**SPOON ORANGE, FLEXIBEL – JT 642**  
25 pcs

**TEASPOON ORANGE, FLEXIBEL – JT 643**  
25 pcs



## PLATES

- **Self-harm resistant plates for challenging environments**
- **Durable and unbreakable plastics**
- **Microwave and dishwasher safe**

Durable plates produced in robust and impact-resistant plastic, extremely difficult to break. The white plates are made of Lexan and extremely robust. The BIO plates have more than 80% less carbon footprint compared to similar products in conventional plastics.



**SOUP PLATE WHITE, LEXAN – HS 606**

Ø 180 mm, 25 pcs

**PLATE WHITE, LEXAN – HS 607**

Ø 180 mm, 25 pcs

**DINNER PLATE WHITE, LEXAN – HS 605**

Ø 240 mm, 25 pcs



**SOUP PLATE GREEN BIO – HS 612**

Ø 150 mm, 25 pcs

**PLATE GREEN BIO – HS 611**

Ø 240 mm, 25 pcs

**DINNER PLATE GREEN BIO – HS 610**

Ø 250 mm, 25 pcs

## GLASSES & MUGS

- **Extremely durable and unbreakable glasses and mugs**
- **"Normalized" table setting in challenging environments**
- **Microwave and dishwasher safe**

Durable and unbreakable glasses, mugs and water pitcher with a well recognizable shape that contributes to a normalized table setting. Made of impact resistant unbreakable plastic with specific material properties to minimize the risk of creating sharp objects. The products are dishwasher and microwave safe. *(Keep in mind that compared to ordinary glass, plastic products do develop scratches and marks over time.)*



**GLASS, 28 cl**  
- HS 615  
25 pcs



**GLASS, 25 cl**  
- HS 616  
25 pcs



**GLASS, 40 cl**  
- HS 614  
25 pcs



**COFFEE MUG,**  
- HS 618  
28 cl, 25 pcs



**PLASTIC GLASS, FROSTED – JT 221**  
30 cl, 25 pcs



**PLASTIC GLASS, BLACK – JT 222**  
30 cl, 25 pcs



**WATER PITCHER - HS 617**  
1,4 liters

*Note that plastic is sensitive to drastic changes in temperature and / or humidity. Dishwasher and microwave use works well, so does cleaning with mild detergents. However, we cannot guarantee the durability in relation to maximum dishwasher cycles because all machines work differently.*

# INTERIOR PRODUCTS

Interior products that contribute to a more functional, attractive and normalized environment without sacrificing safety. For many people with cognitive or intellectual challenges, it is important to be able to maintain a daily structure, where for example both a whiteboard and a clock provides support for daily routines.

## WALL CLOCKS

- **Ligature resistant design**
- **Robust and impact resistant casing**
- **Easy-to-read displays**

Battery powered 24-hour clock with day, date, month, year and temperature. Other colours available on request.



**DIGITAL SAFE CLOCK – HSA140**  
W: 328 mm, H: 355 mm, D: 35 mm



**ANALOGUE SAFE CLOCK – HSA141**  
W: 500 mm

## WHITEBOARD

- **The frame has sloped edges to reduce the risk of attaching a ligature**
- **Robust and durable**
- **Mounted securely to the wall with safety screws**

The whiteboard can be used to express oneself in writing or drawing and/or for schedules and notes to support the structure of daily activities. Designed for whiteboard pens.



**WHITEBOARD – HS 425**  
W: 600 mm H: 800 mm D: 21 mm



## MIRRORS

- **Scratch resistant unbreakable polycarbonate mirrors with minimal image distortion**
- **The frame has sloped edges to reduce the risk of attaching a ligature**
- **Replaceable polycarbonate mirror, if scratched**

Our mirrors are designed to look like and function as "ordinary" mirrors. The tight fit of the frame against the wall and the high-quality unbreakable mirror are key to achieve a safe, as well as an attractive interior.

Unlike glued or recessed mirrors this polycarbonate mirror can be replaced easily. The polycarbonate glass offers substantially less image distortion in comparison to polished metal or low cost acrylic mirrors. The bathroom mirror frame comes in extremely robust and water-resistant high-pressure laminate.



Frame in high quality birch plywood

**MIRROR BIRCH 1200 – HS 422**  
W: 380 mm H: 1200 mm D: 23 mm

**MIRROR BIRCH 600 – HS 420**  
W: 380 mm H: 600 mm D: 23 mm



Can be ordered without the hook

**MIRROR BIRCH DROP – HS 421**  
W: 380 mm H: 450 mm D: 23 mm

Frame in extremely robust high-pressure laminate (HPL), suitable for bathrooms due to the material's stability.



**BATHROOM MIRROR, WHITE – JT 410**  
W: 380 mm H: 600 mm D: 21 mm. Weight: 4,8 kg

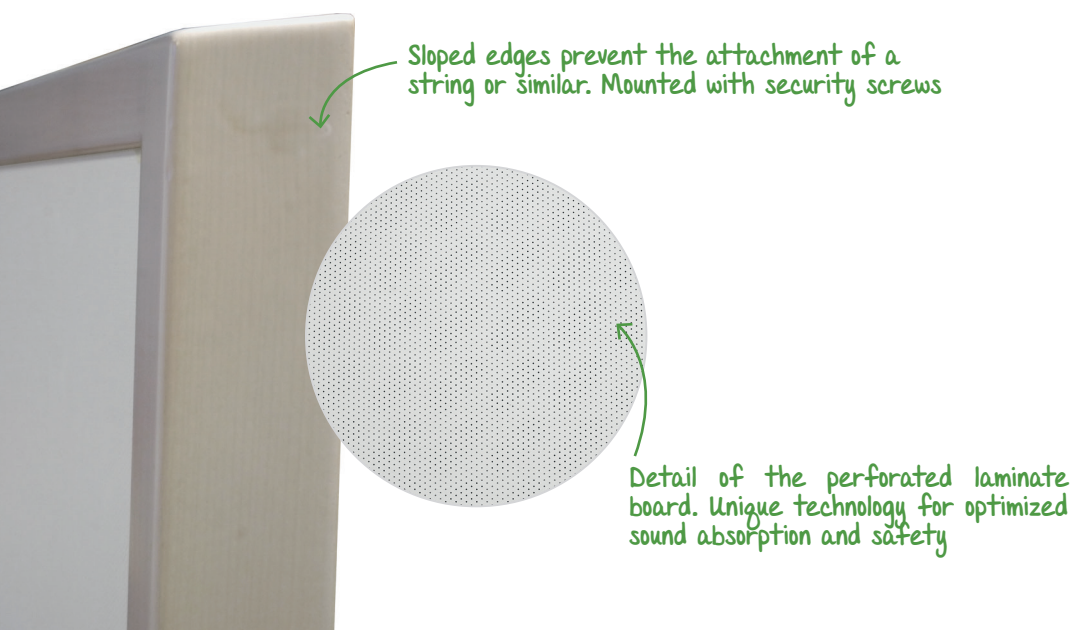
## SOUND ABSORBENT

- ***An extremely robust sound absorbent panel, specifically designed for challenging environments***
- ***The frame is made from solid birch and is designed with sloped edges to reduce the risk of attaching a ligature***
- ***The surface can be printed with any image***

Reducing the noise level in care environments has a stress-reducing effect, which in turn has a positive effect<sup>2</sup> on sleep quality, which may lessen the risk of aggression.

The fire rated sound absorbent has a unique durable microperforated surface with ideal properties for hygiene requirements due to its hardness and resistance to chemicals. The holes, only 0.5 mm large, hinder dust and fluids to penetrate the board, a requirement ordinary sound absorbents cannot meet. With the sloped edges and mounted with security screws makes the sound absorbent impossible to grab and pull it off the wall.

<sup>2</sup> References on page 67.



The panel comes in white laminate as a standard, the frame in solid birch. The panels can be mounted horizontally or vertically on a wall or ceiling. The surface can be printed with one of our nature images by Anita Campbell - an opportunity to combine art with the stress reducing function of sound absorbents.

See product "Wall Art" (pages 29-31) for the collection of nature images.



**SOUND ABSORBENT WHITE LAMINATE W FRAME – HS 431**

W: 680 mm H: 1280 mm

**SOUND ABSORBENT WHITE LAMINATE w/o FRAME – HS 433**



## WALL ART

- **A range of unique nature images**
- **Contributes to a healing environment**
- **Choose between print on wallpaper, polycarbonate or sound absorbent panel**

Nature images and the view of nature have an evidence-based impact on reducing stress.<sup>1</sup> In collaboration with the renowned nature photographer Anita Campbell, we are happy to offer a selection of her images for healing environments, such as patient rooms, living rooms, corridors, entrances, etc. The images are printed on unbreakable polycarbonate, custom sized photo wallpaper or on our sound absorbent panels.

<sup>1</sup> References on page 67.

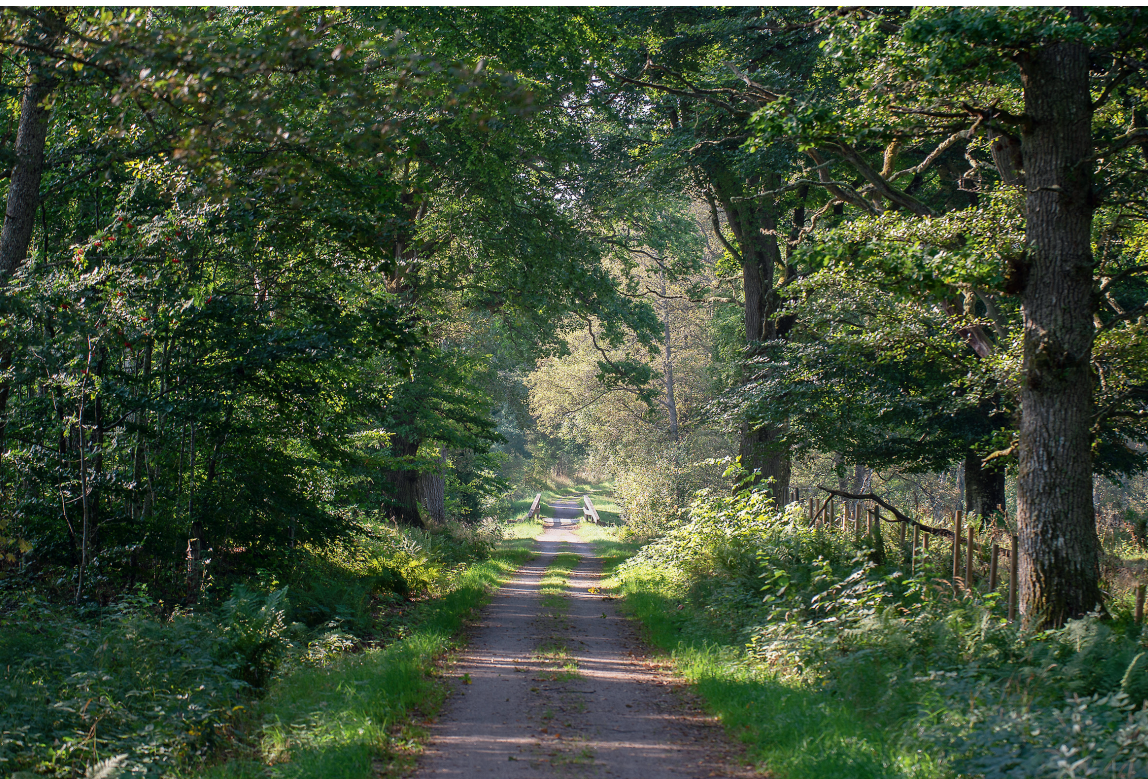


*Anita Campbell is a professional photographer since 15 years. During her rehabilitation after a traffic accident, she discovered the healing power of nature. Nature photography became her passion. Previously, she had devoted herself to brain research and is an associate professor in biochemistry. Today, she combines her scientific background and photography.*



All nature  
photos  
pages 30-31

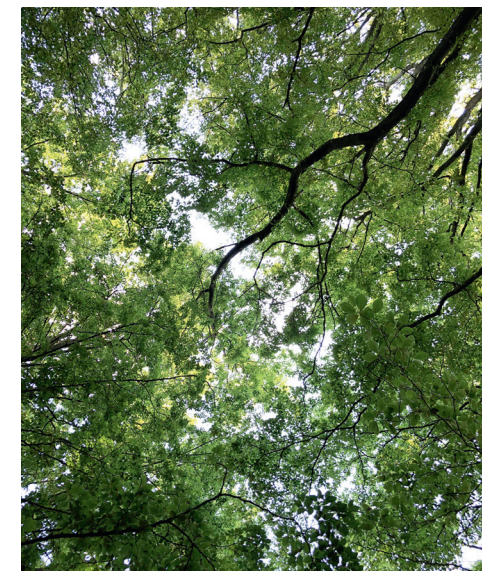




*Forest road*



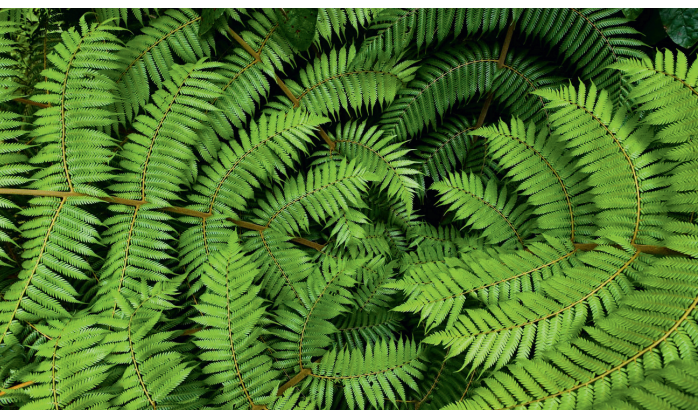
*Glade*



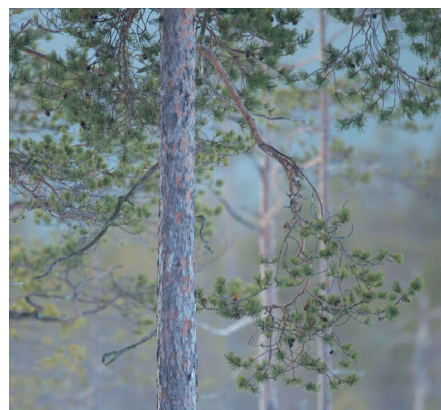
*Beech Forest*



*Flower meadow*



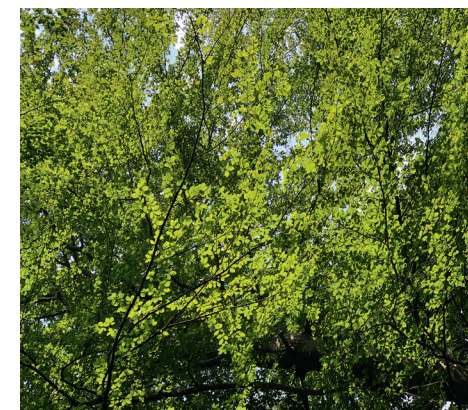
*Fern*



*Pine*



*Weatear*



*Foliage*





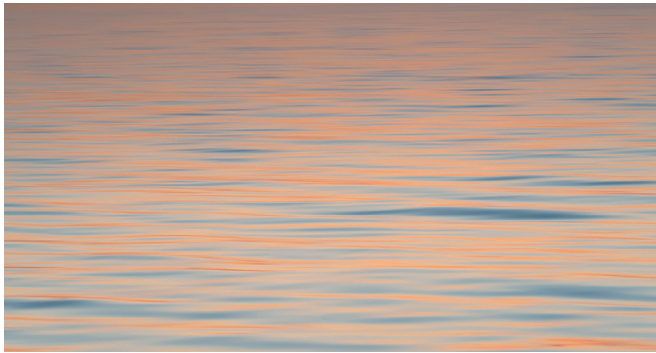
*Calm sea*



*Burroughs*



*Wooden pier*



*Pink Sea*



*Lyme grass*



*Skerry*

## BED SIDE LAMP

- **Ligature resistant**
- **Robust and durable**
- **Dimmer switch**

A robust wall mounted dimmable reading bed side lamp with a white powder coated steel casing. Light beam angle 45° downwards and adjustable 25° sideways. The dome shape reduces the risk of injury. The bed lamp's dimmer and rotation enhances the user's sense of autonomy and offers better ergonomics.<sup>7</sup>

<sup>7</sup>References on page 67.



**BEDSIDE LAMP, HALF GLOBE, DIMMABLE – HSF100**  
White. Diameter: 1630 mm. D: 730 mm

**BEDSIDE LAMP, HALF GLOBE, DIMMABLE – HSF102**  
Customized colour. Diameter: 1630 mm. D: 730 mm

## FLEXIBEL PEN

- **Soft and flexible to reduce the risk for self harm or harm to other patients or personnel**
- **The flexible pen bends when pressure is applied**
- **Good grip**

The flexible pen is especially designed for environments where safety requirements are high.

Made of transparent soft plastic.



**FLEXIBLE PEN – HSI650**  
25 pcs. L: 100 mm

**FLEXIBLE PEN – HSI651**  
100 pcs. L: 100 mm



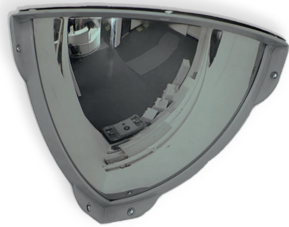


## MIRROR DOMES

- **Scratch resistant and unbreakable polycarbonate, minimal distortion**
- **Ensures safety**
- **Ideal for use in any areas that requires wide area surveillance**

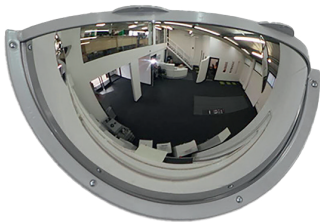
Suitable for corridors, corners, client/day room, visitors area, or other areas that require monitoring.

The dome is inserted with impact-absorbing foam, which significantly increases the dome's impact resistance.



**MIRROR DOME 90°, POLYCARBONATE – HSA132**  
H: 300 mm, W: 300 mm

**MIRROR DOME 90°, STEEL – HSA130**  
H: 250 mm, W: 250 mm



**MIRROR DOME 180°, POLYCARBONATE – HSA133**  
H: 300 mm, W: 600 mm

**MIRROR DOME 180°, STEEL – HSA131**  
H: 250 mm, W: 500 mm

## HARDWARE

- **Ligature resistant**
- **Robust**
- **Safe mounting**

Robust, strong and sustainable, high-quality enhances safety.



The arched shape of the handle with closed underlying cavities makes it impossible to attach a string or similar

**DOOR HANDLE – HSK156**  
H: 150 mm, W: 40 mm, D: 28 mm

**DOOR HANDLE, BACKPLATE – HSK155**  
H: 180 mm, W: 52 mm, D: 31 mm



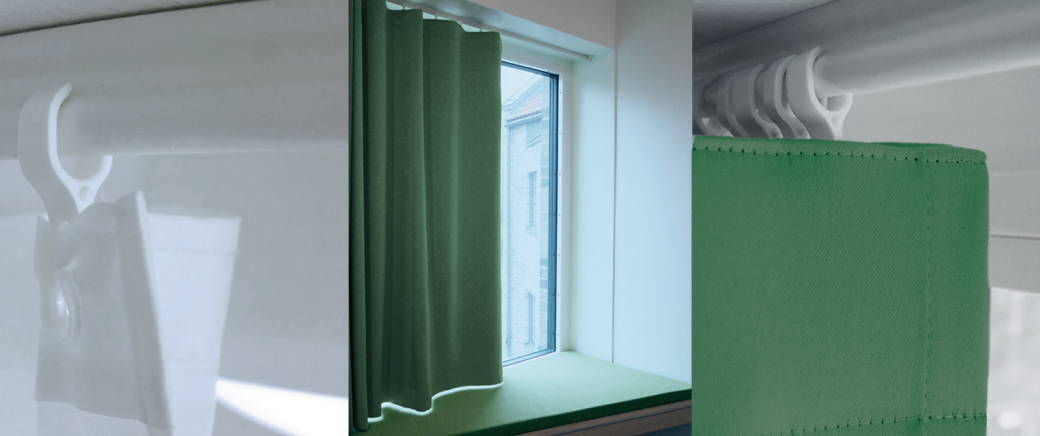
**DOOR HANDLE BUFFER – HSA145**



**HINGES – HSA150**

Specially designed to prevent ligatures





**FORENSIC PSYCHIATRY VADSTENA, SWEDEN** / J-trac curtain rail system



**CHILDREN'S PSYCHIATRIC HOSPITAL STOCKHOLM, SWEDEN**  
/ J-trac curtain rail, curtains and furnishing



**REGION HOVEDSTADEN PSYCHIATRY COPENHAGEN, DENMARK**  
/ Shower shelf & Toilet paper holder

## PRODUCT DESIGN COLLABORATION

HealSafe Interior continuously develop our product range to meet real needs. We apply a user centred design process in close dialogue with our customers, nationally and internationally.

To the right you find three examples of projects designed in close collaboration with facilities.

Also, please feel free to contact us to discuss unresolved needs, we are happy to take on new challenges. Your unique knowledge and experience of your specific care environment and our experience of interior design for challenging environments can together bring new innovative solutions that solve the unsolved problems and create a safer environment for patients and staff. We truly believe that it is possible to create a safe and healing environment without compromising respect and dignity for patients and staff.

*Welcome to visit our show room in Gothenburg for a digital tour or a face-to-face meeting. We are happy to arrange samples for you and to discuss how we can meet your needs over a video meeting.*

+46 (0)708 84 61 76

+46 (0)723 17 47 98

info@healsafeinterior.com





## DISCLAIMER

HealSafe Interiör constantly strives to improve and develop products to achieve the highest possible level of safety in terms of self-harm, suicide, assault and vandalism. High security environments require the right product to solve the right problem. Proper installation according to our mounting instructions is important for maintaining the product's properties.

To our knowledge, the products we offer and describe as self-harm and suicide resistant function as we intended and shall reduce risk of injuries to patients, clients and staff. Nevertheless, HealSafe Interiör AB does not provide any guarantee that would mean that our products can prevent all kinds of self-harm, violence or suicide since each environment is unique and it is impossible to foresee all incidents that may occur. It is most important to underline that self-harm and suicide resistant products, or products that make a safer work environment, can never replace the human interpersonal factor to screen for suicide, self-harm, threats and violence against staff, vandalism or possession of objects or substances that can seriously harm the individual. It is not possible for HealSafe Interiör AB to warn the consumer of any conceivable and unknown danger in connection with the use of the products, the facilities (i.e. mental health, custodial care and similar institutions where there is risk of self-harm and suicide, or violence towards staff or patients) must use their own common sense and good judgment when using the products.



WARRANTY - Read more

## RECOMMENDED READING

The Center for Health Design, <https://www.healthdesign.org>

Healing spaces

Esther M Sternberg (2010)

## REFERENCES

<sup>1</sup> View through a window may influence recovery from surgery.

Ulrich, R. S. (1984). *Science, new series*, 224(4647), 420-421. Nanda et.al, 2009. *Neuroesthetics and Healthcare Design. HERD vol. 2 WINTER 2009.*

<sup>2</sup> Psychiatric ward design can reduce aggressive behavior.

Ulrich, R., Bogren, L., Gardiner, S. et al (2018) *Journal of Environmental Psychology*, 57: 53-66

<sup>3</sup> The Environmental Psychology of Prisons and Jails: Creating Humane Spaces in Secure Settings.

Wener, R. E. (2012). Cambridge: Cambridge University Press.

<sup>4</sup> Patient Safety Standards, Materials and Systems Guidelines

New York State Office of Mental Health. / [https://omh.ny.gov/omhweb/patient\\_safety\\_standards/guide.pdf](https://omh.ny.gov/omhweb/patient_safety_standards/guide.pdf)

<sup>5</sup> Selfmord i norske fengsler: del 1 Suicidologi, 5(1).

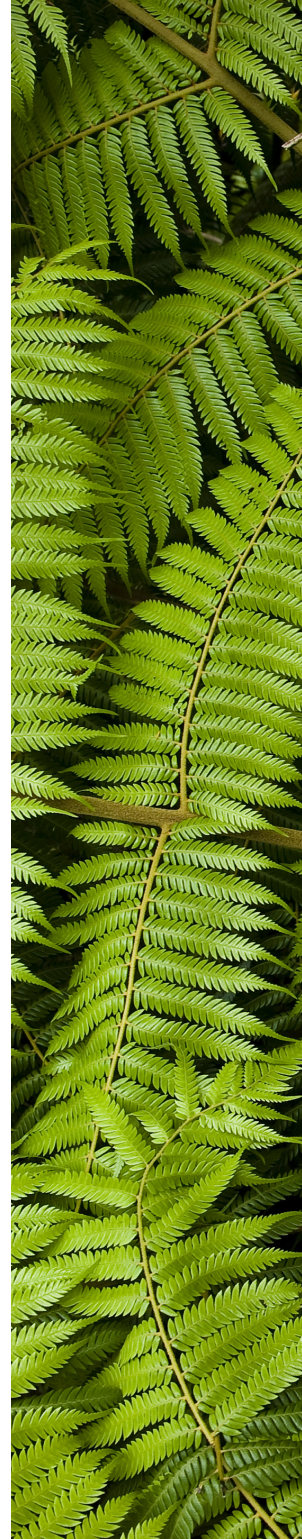
Hammerlin, Y. (2000). / <https://brage.bibsys.no/xmlui/bitstream/handle/11250/160403/selvord%20del2.pdf?sequence=1>

<sup>6</sup> The meanings of place and space in forensic psychiatric care - A qualitative study reflecting patients' point of view.

Olausson, S, Danielson, E, Berglund Johansson, I & Wijk, H. (2018). *International Journal of Mental Health Nursing*, 2018. / <https://doi.org/https://doi.org/10.1111/inm.12557>

<sup>7</sup> "It's important to not lose myself", Beds, Carceral Design and Women's Everyday Lift within Prison Cells.

James, F. (2018) In Fransson, E., Giofrè, F & Johnsen, B (Eds.), *Prison Architecture and Humans. Postboks 1900, 0055 Oslo, Norway: Nordic Open Access Scholarly Publishing (NOASP), Cappelen Damm Akademisk.*







# KORPINEN

Väinö Korpinen Oy,  
Kalkkipellontie 6,  
FI-02650 Espoo  
Tel. +358 9 5491 4400  
[korpinen@korpinen.com](mailto:korpinen@korpinen.com)

Scandinavian  
Design for  
Safe & Healing  
Environments

HealSafe  
Interiör

HealSafe Interiör AB  
Nordhemsgatan 40  
SE- 413 06 Göteborg  
[info@healsafeinterior.com](mailto:info@healsafeinterior.com)



[www.healsafeinterior.com](http://www.healsafeinterior.com)