



# KORPINEN

Accessible bathroom equipment for module manufacturing

2023 | Sari Selenius

# KORPINEN

Korpinen is a pioneer in accessibility, offering high-quality bathroom solutions designed specially for each customer and aids for accessible environments.

- Established in **1935**
- Accessible bathrooms since **1998**
- Antimicrobial products since **2015**
- Part of AddLife Group since **2018**
- Revenue **7,5 M€** in 2022



## A pioneer in its field

Bathroom concepts developed in collaboration with hospital districts.



## Market leader

More than 60,000 accessible Gaius bathrooms delivered around the world.



## Satisfied customers

Used in hospitals, care homes, public spaces and residential properties.

# Global presence – local support

**KORPINEN**  
- A PART OF AddLife

**AddLife**

With our group companies we provide local support for your projects in Finland, Sweden, Norway and Denmark.

- Provides equipment, supplies, and related services to the social and health care industries
- 85 subsidiaries & 2,000 employees
- Turnover 900 M€
- Working in the Nordic countries and Europe

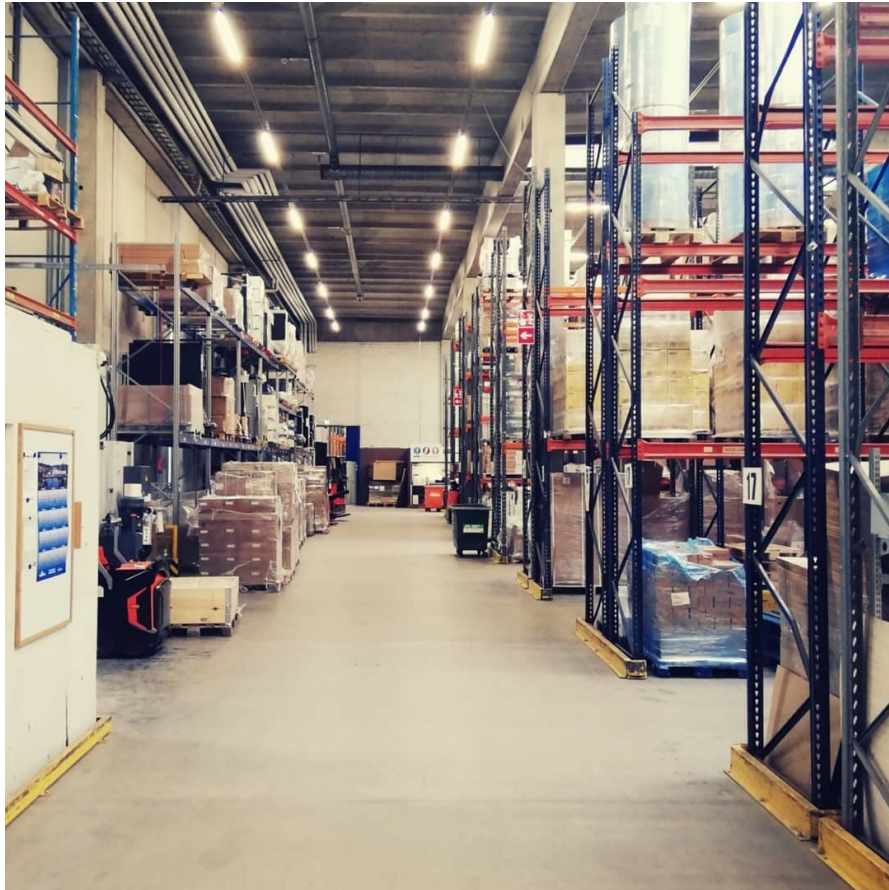
**HEPRO**  
- A PART OF AddLife

**ROPOX™**  
BETTER WAYS TO BETTER DAYS  
- A PART OF AddLife

**SVANCARE®**  
- A PART OF AddLife

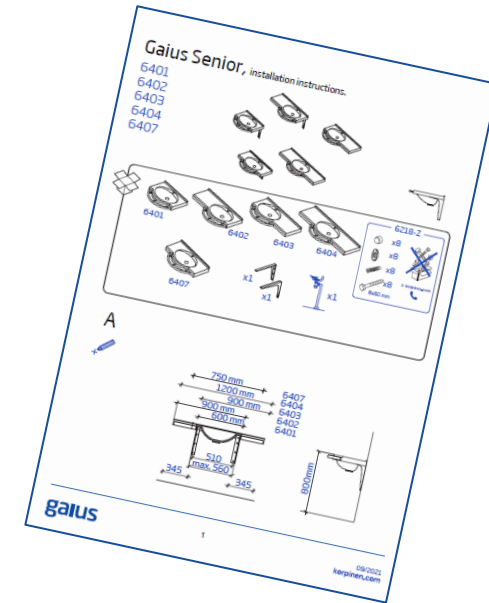


# Your reliable partner in module manufacturing



## Quality documentation on all products

- Design objects (RFA, DWG, GDL)
- Ready-made bathroom layouts
- Technical data and measurement drawings
- Installation, maintenance and care instructions



## Deliveries from our own warehouse in Finland

- Always on time
- Delivery time 1 – 5 weeks
- Special packaging available, ie. pallet per bathroom
- Spare parts availability for decades



ISO 9001-certified  
management system

# Our accessibility experts at your service



Material Bank  
**For architects**

Communicate the benefits of well designed accessible bathrooms  
→ create value to your customers in smaller, more functional and cost-effective bathroom-designs.

Your sales personnel can be trained in accessibility by our specialists.

We are available for joining your customer meetings.



**Contact our accessibility expert**

Anu Pennanen  
+358 40 527 0742

[anu.pennanen@korpinen.com](mailto:anu.pennanen@korpinen.com)

# Accessible Gaius bathroom concepts

## GAIUS CARE

Added functionality for care homes, assisted living facilities, specialist housing units and hospitals



[READ MORE >](#)

## GAIUS LIFE

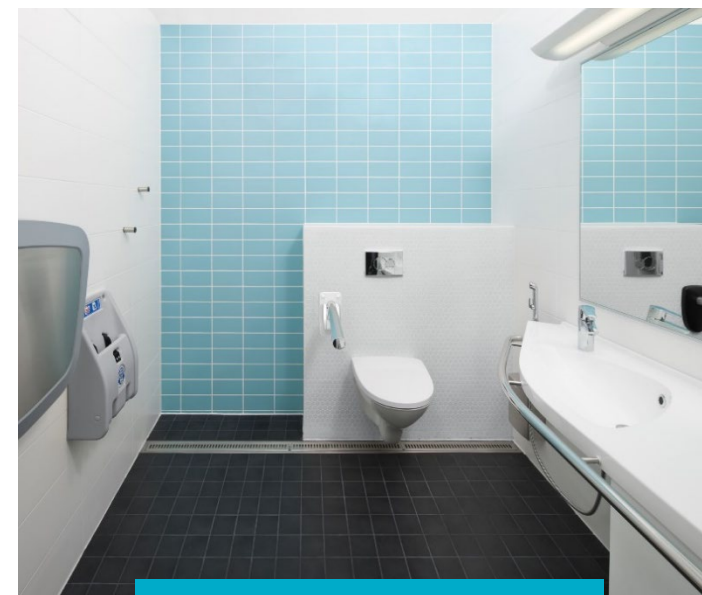
Stylish solutions for homes and independent living



[READ MORE >](#)

## GAIUS PUBLIC

An extensive product range for public facilities



[READ MORE >](#)

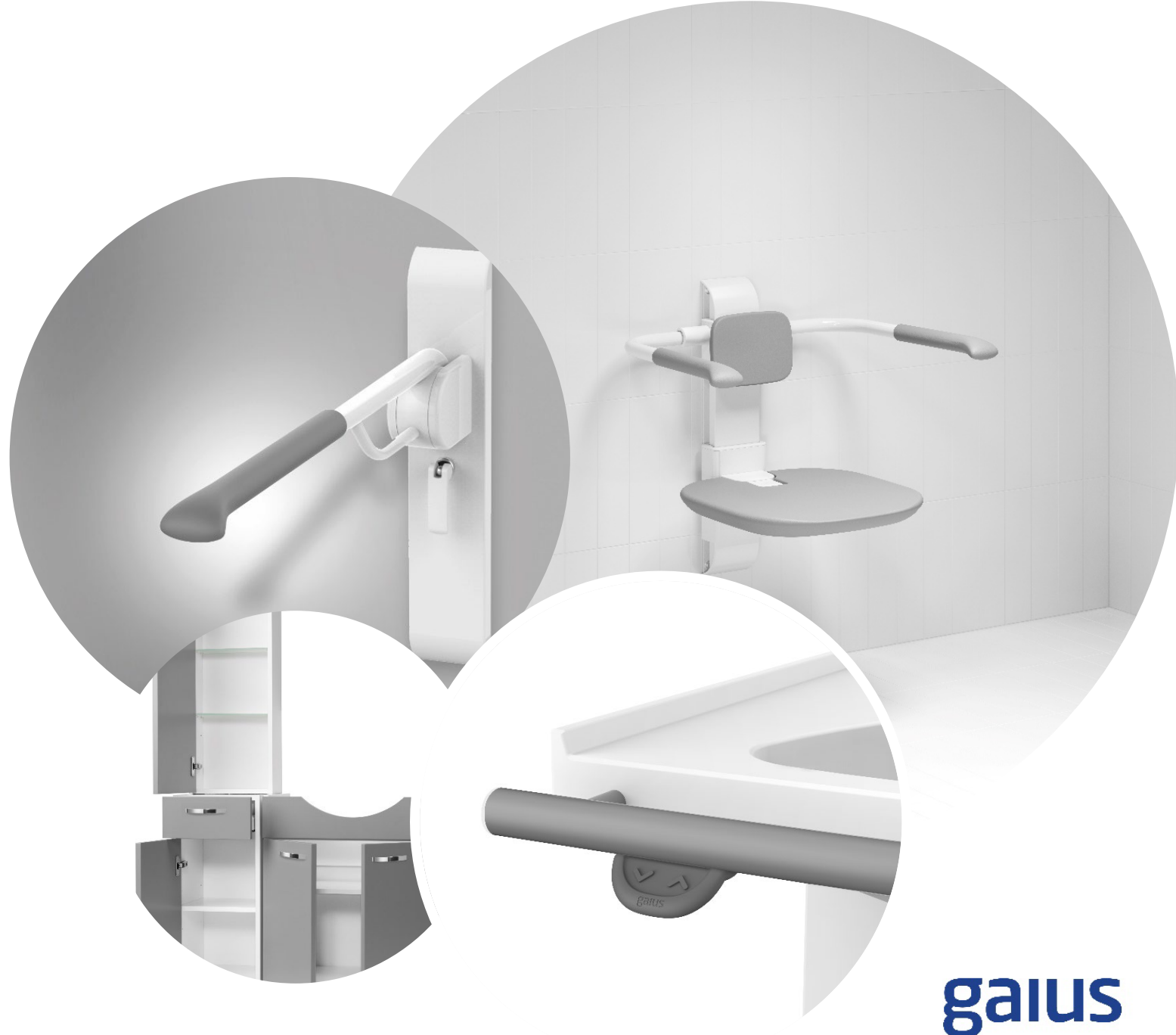
[Model templates](#)

KORPINEN

# Gaius products

The Gaius bathroom unit is composed of premium furnishings and equipment, organised to ensure optimum functionality.

- Basins and height adjustment for basins
- Support rails and handrails
- Cabinets
- Shower seats
- Height adjustable toilet seats
- Basins also available in composite material!



**gaius**

# Suitable product lines on all needs

**Beautiful and functional  
modern product lines**



**Cost-effective and functional  
classic product lines**





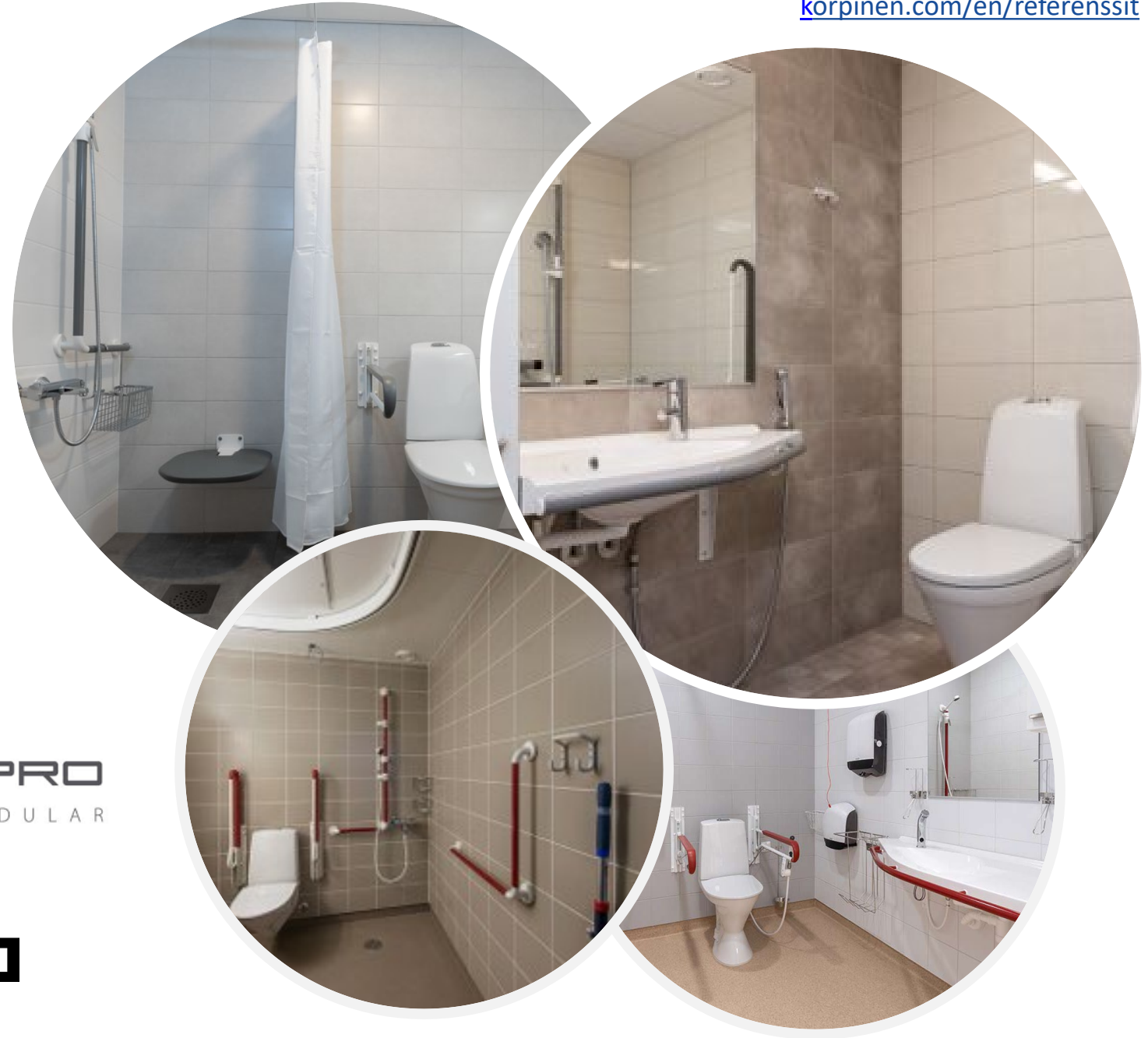
## Korpinen bathroom fittings

- Antimicrobial bathroom fittings from stainless steel
- Paper towel, soap and disinfectant dispensers
- Toilet paper and brush holders
- Waste bins and cup holders
- Hooks
- Shower baskets
- Plenty of equipment also from other main manufacturers



# Fulfilling the highest standard of module manufacturing

Some of our customers:



Book a meeting with us!



**Sari Selenius**

Export Sales

+358 50 421 7210

[sari.selenius@korpinen.com](mailto:sari.selenius@korpinen.com)